



# Łutsël K'é Dene First Nation

Chief Darryl Marlowe  
Box 28  
Lutsel K'e, NT  
X0E 1A0  
(867) 370-3051  
chief.lkdfn@gmail.com

February 27th, 2019

Tom Beaulieu  
Tu Nedhé - Wiilideh MLA

PO Box 1320  
Yellowknife, NT  
X1A 2L9

(867) 767-9143 ext. 12185  
Tom\_Beaulieu@gov.nt.ca

Dear Mr. Tom Beaulieu,

The Łutsël K'é Dene First Nation (LKDFN) has been leading in-depth discussions with the GNWT and Parks Canada for a dozen years now with respect to the establishment of a National Park Reserve, Territorial protected and conserved areas in Thaidene Nënë, the "Land of the Ancestors".

With the introduction of Bill 38, the Protected Areas Act, we are now in the final stages of fulfilling our respective mandates to establish Thaidene Nënë within the life of the 18<sup>th</sup> Legislative Assembly. Łutsël K'é Dene First Nation has done our part. Last week, our membership approved establishment of Thaidene Nënë by referendum with an 88% vote of support.

It is now time for the Legislative Assembly of the Northwest Territories to take the next step.

As you know, establishing Thaidene Nënë is a priority of the 18<sup>th</sup> Legislative Assembly and an important element of the mandate of the Government of the Northwest Territories.

**I urge you to expedite your consideration of Bill 38** so that Thaidene Nënë can be established as the first Territorial Protected Area under this new legislation, and permanently protected under Denesoline, federal and territorial law. It is critical that this occur in the life of this Assembly.



We have included a folder of materials on Thaidene Nënë to assist you in your timely deliberations.

The enclosed materials describe how Thaidene Nënë will contribute to the environmental stewardship and economic diversification priorities of the 18<sup>th</sup> Assembly. Thaidene Nënë is a critical ecological and cultural landscape of the NWT. Protection of this area under the NWT Protected Areas Act will fulfill the integrity of vital ecosystems and the continuity of the Dene way of life. Thaidene Nënë will also provide a significant number of new and permanent economic opportunities for the people of Łutsël K'é, and contribute to the long-term economic diversification of the Territorial economy as a whole.

My Thaidene Nënë negotiators, Steven Nitah at [stevennitah@gmail.com](mailto:stevennitah@gmail.com) and Stephen Ellis at [scellis@eastarm.com](mailto:scellis@eastarm.com), are available to answer any questions you may have. Feel free to call on them at any time.

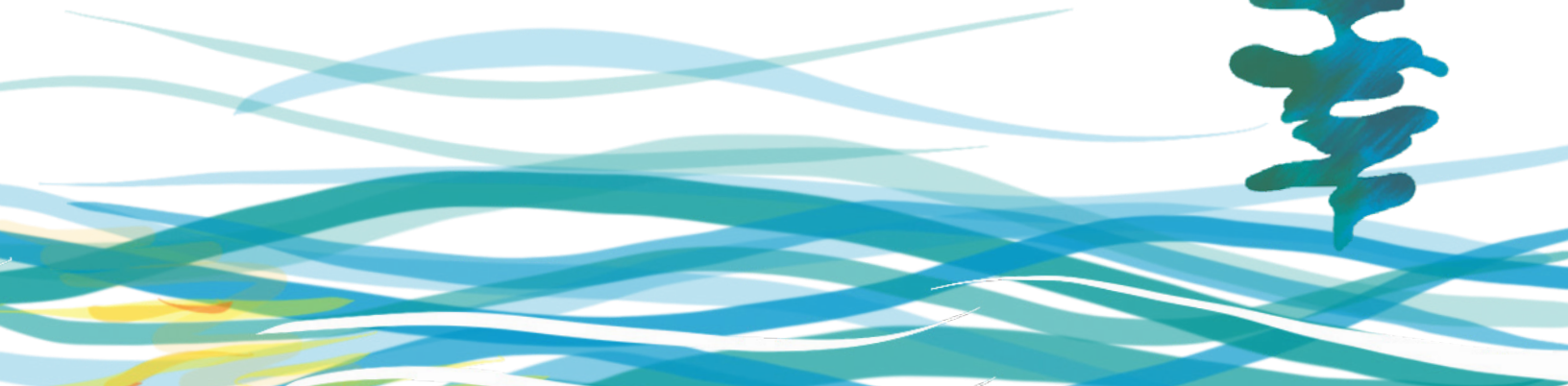
The people of Łutsël K'é have enjoyed working with the members of the 18<sup>th</sup> Legislative Assembly and the Government of the Northwest Territories to realize our important and historic goal of establishing Thaidene Nënë.

In the coming months we look forward to celebrating the creation of TDN with you and the people of the Northwest Territories.

Sincerely,

A handwritten signature in black ink, appearing to read 'Darryl Marlowe', positioned below the 'Sincerely,' text.

Chief Darryl Marlowe  
Łutsël K'é Dene First Nation





# Thaidene Nënë

Land of the Ancestors



Łutsël K'é Dene  
First Nation

# Thaidene Nënë Status Update

For Members of the 18th Legislative Assembly of the NWT From the Łutsël K'é Dene First Nation, February 27, 2019

## Establishment Agreements

The LKDFN membership has ratified two initialled Thaidene Nënë Establishment Agreements by unanimous show of hands in Łutsël K'é on Jan. 17, 2019 and a successful all-membership referendum on Feb. 18, 2019. These agreements are:

- With the GNWT for the establishment of Thaidene Nënë Territorial Protected Area and Wildlife Conservation Area; and
- With Parks Canada for the establishment of Thaidene Nënë National Park Reserve

## Land Transfer

Any outstanding issues in a Land Transfer Agreement between the GNWT and Parks Canada necessary for Thaidene Nënë National Park Reserve establishment have been resolved.

## Regional Management Committee

LKDFN, Parks Canada, and GNWT are working with other Indigenous governments on the final details of a Thaidene Nënë regional management committee. Other Indigenous governments are also discussing economic arrangements with the GNWT and Parks Canada related to Thaidene Nënë.

## Thaidene Nënë Legislation

Parks Canada is working on legislation for the establishment of Thaidene Nënë National Park Reserve.

## Territorial Protected Areas Act

A *Territorial Protected Areas Act* is before the 18th Legislative Assembly during the current session. Enactment of the legislation is necessary for the establishment, by regulation, of Thaidene Nënë Territorial Protected Area. Regulations to establish the territorial portions of Thaidene Nënë are currently being considered by the GNWT.

## Time Sensitive

The LKDFN, GNWT, and Parks Canada share the mandate to establish the entirety of Thaidene Nënë prior to the upcoming federal and territorial elections. Political and financial commitments related to Thaidene Nënë are contingent upon achieving this timeline. In order to fulfill its mandate, GNWT must in the coming months:

- Enact the Territorial Protected Areas Act and establish the territorial portions of Thaidene Nënë by regulation;
- Sign the Land Transfer Agreement with Parks Canada; and
- Sign the Thaidene Nënë Establishment Agreement with the LKDFN

LKDFN anticipates signing and celebrating both Thaidene Nënë Establishment Agreements with the GNWT and Parks Canada in the spring of 2019 in Łutsël K'é.



# Thaidene Nënë Timeline to Date

**2000**

LKDFN initiates discussions with Parks Canada about potential National Park Reserve.

**2004**

LKDFN approves a name, boundary, and vision for Thaidene Nënë.

**2007**

LKDFN enters into an MOU with Parks Canada to investigate the feasibility of protected areas in Thaidene Nënë. The land is put under Interim Land Withdrawal.

**2010**

LKDFN enters into a Thaidene Nënë Framework Agreement. Negotiations with Parks Canada for a National Park Reserve in Thaidene Nënë commence.

**2015**

Post-devolution, LKDFN commences negotiations with the GNWT for abutting Thaidene Nënë territorial protected areas.

**2016**

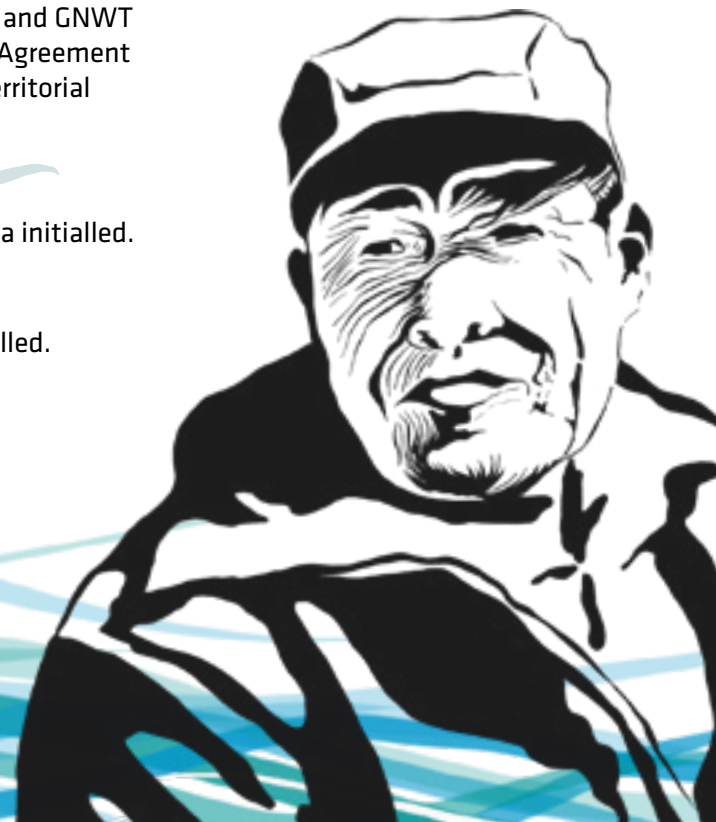
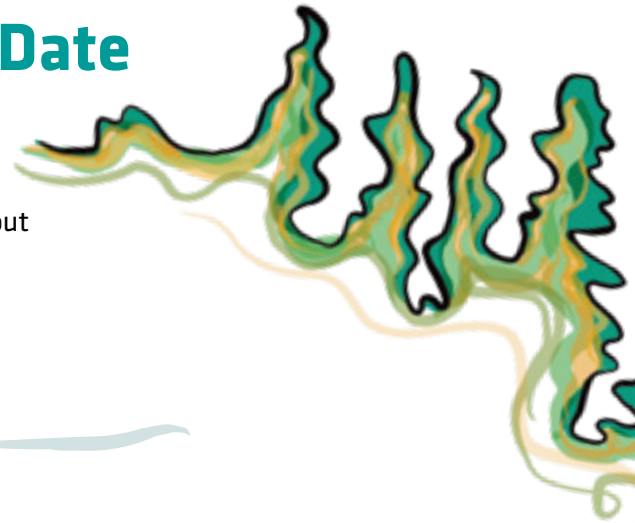
In the Mandate of the GNWT 2016-2019, commitments to establish Thaidene Nënë and enact territorial protected area legislation are made. Canada and GNWT commence negotiations for a Land Transfer Agreement (LTA). GNWT also begins advancing a new Territorial Protected Areas Act.

**2018**

Establishment Agreement with Parks Canada initialled.

**2019**

Establishment Agreement with GNWT initialled.





# 2019 Critical Path to Thaidene Nënë Establishment

## Łutsël K'é

- Ratified the Establishment Agreements with Canada and the GNWT.
- Sign Establishment Agreements with Canada and GNWT.
- Advise the development of territorial regulations and federal legislation to establish Thaidene Nënë.

## Parks Canada

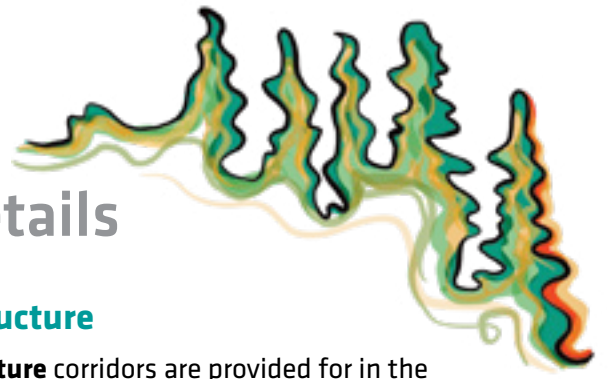
- Sign Establishment Agreement with LKDFN.
- Sign the LTA with the GNWT.
- Complete federal legislative process to add Thaidene Nënë to schedule B of the Canada National Parks Act.

## GNWT

- Sign LTA with Parks Canada.
- Sign Establishment Agreement with LKDFN.
- Enact Territorial Protected Areas Act.
- Complete Regulations under the Territorial Protected Areas Act and Wildlife Act to establish Thaidene Nënë.



# Thaidene Nënë Summary Details



## Treaties

All of Thaidene Nënë remains subject to **treaty and aboriginal rights** and any land claims, litigation, and treaty provisions.

## Infrastructure

**Infrastructure** corridors are provided for in the territorial protected area, but not the National Park Reserve.

## Rights

Indigenous people will be able to exercise their **rights** in Thaidene Nënë as they do now.

## Management

**Management** and operational responsibility in Thaidene Nënë is shared between LKDFN and public governments through a consensus board.

## Non-indigenous residents and visitors

**Non-indigenous residents** and visitors will be able to use Thaidene Nënë substantively as they do now (exception is big game hunting in the National Park Reserve).

## Employment

Initial direct **employment** in Łutsël K'é resulting from Thaidene Nënë will be 18 positions, including at least 8 full-time jobs.

## Industry

**Industrial development** is not allowed in Thaidene Nënë.

## Visitor Center

A visitor, heritage, and operations **centre** will be built in Łutsël K'é.



# Thaidene Nënë Boundaries

**Total area protected is 26,376 km<sup>2</sup>  
which will be designated by the LKDFN  
using its own Dene law.**

**Canada and the GNWT will also use their  
laws to designate areas within Thaidene Nënë:**

- **National Park Reserve - 14,305 km<sup>2</sup>**  
Parks Canada using the *Canada National Parks Act*.
- **Territorial Protected Area - 8906 km<sup>2</sup>**  
The GNWT, using a new *Territorial Protected Areas Act*.
- **Wildlife Conservation Area - 3165 km<sup>2</sup>**  
The GNWT using the *Wildlife Act*.





# Thaidene Nënë Economic Impacts

LKDFN, Parks Canada, and GNWT will each have staff, equipment, vehicles, and programs associated with the management and operation of Thaidene Nënë.

## LKDFN \$30 Million Dollar TDN Fund

LKDFN, for its part, has established the Thaidene Nënë Fund to support its costs of implementing its responsibilities for Thaidene Nënë. LKDFN has raised \$15M from private sources to put into the TDN Fund. The Government of Canada has matched this amount. This \$30M will be placed into the TDN Fund, where it will be protected and the annual interest and investment income will be used by LKDFN for the management and operation of Thaidene Nënë. Fund revenue will also be used for capacity building, promoting the Dene way of life, and business development associated with Thaidene Nënë.

Every job outside of Yellowknife is like 10 jobs in Yellowknife.

*NWT Finance Minister Michael Miltenberger,  
CBC News, February 7, 2013*

## TDN Fund Interest, \$1M-\$4M Yearly

Invested conservatively, it is expected that the TDN Fund will generate between \$1M-\$4M per annum in perpetuity in support of LKDFN expenditures associated with Thaidene Nënë.

## Parks Canada's Contribution

Parks Canada has committed to a minimum of **\$32M** in operational spending on Thaidene Nënë within the first **12 years** of establishment, and **\$3M annually after** that.

## GNWT's Contribution

GNWT anticipates a minimum spend on Thaidene Nënë of about \$290,000 annually during the first three years after establishment.

## 18 New Jobs

Together, LKDFN, Parks Canada, and GNWT are committed to creating at least 18 new jobs in Łutsël K'é associated with the management and operation of Thaidene Nënë.





## A New Conservation Economy

### Łutsël K'é's Economic Future

Thaidene Nënë is not just about conservation - it is about promoting a viable economic future for Łutsël K'é as the primary "gateway" to the protected areas and the operational and service center of Thaidene Nënë.

### Conservation-Related Revenues

With the establishment of Thaidene Nënë, the Northwest Territories will begin accessing new economic opportunities that are part of a global trend in conservation-related financing and economic development.

### \$42 Billion Dollar Industry

Around the world and especially in Canada, large corporations, pension funds, foundations, and governments are investing in new economies associated with conservation. Research indicates that the global market for investing in conservation is approximately 42 billion (CAD) and is growing rapidly. Over the next five years, private investment is expected to triple.

These investments stimulate economic activity and jobs for local communities associated with conservation areas.

February 27, 2019 Update

## Tourism

**Economic impacts of Thaidene Nënë tourism would be broader than Łutsël K'é . Yellowknife, Ndilo, Dettah, and Fort Resolution will all benefit from TDN through traffic.**

### Increased Tourism in the NWT

*The Thaidene Nënë Tourism Strategy (2013), commissioned by the LKDFN in partnership with GNWT-ITI, indicates that Thaidene Nënë can be a potent catalyst for significantly enhanced tourism opportunities for Łutsël K'é and the territory as a whole.*

### 50 New Tourism Related Jobs

The Tourism Strategy projects that tourism development associated with Thaidene Nënë could create at least 20 new year-round jobs in the community, as well as an additional 30 seasonal jobs.

## Capital Infrastructure

**Parks Canada, LKDFN, and GNWT are committed to establishing an administrative and operations center, a visitor and heritage center, and patrol cabins in Łutsël K'é and Thaidene Nënë.**

