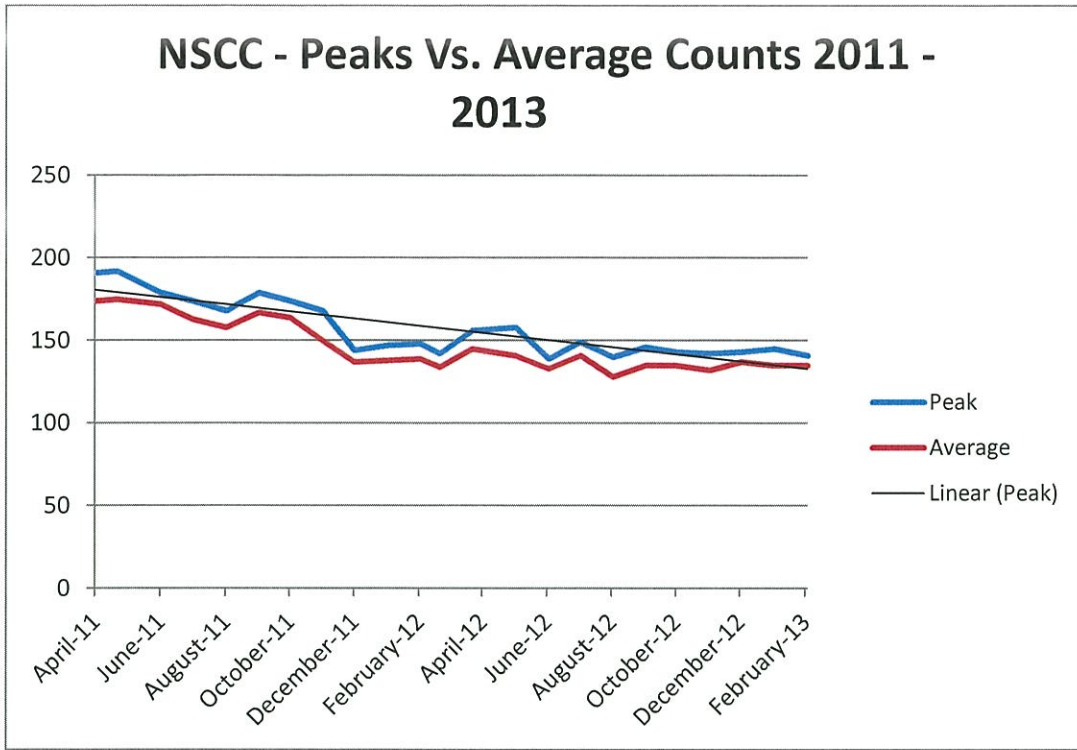
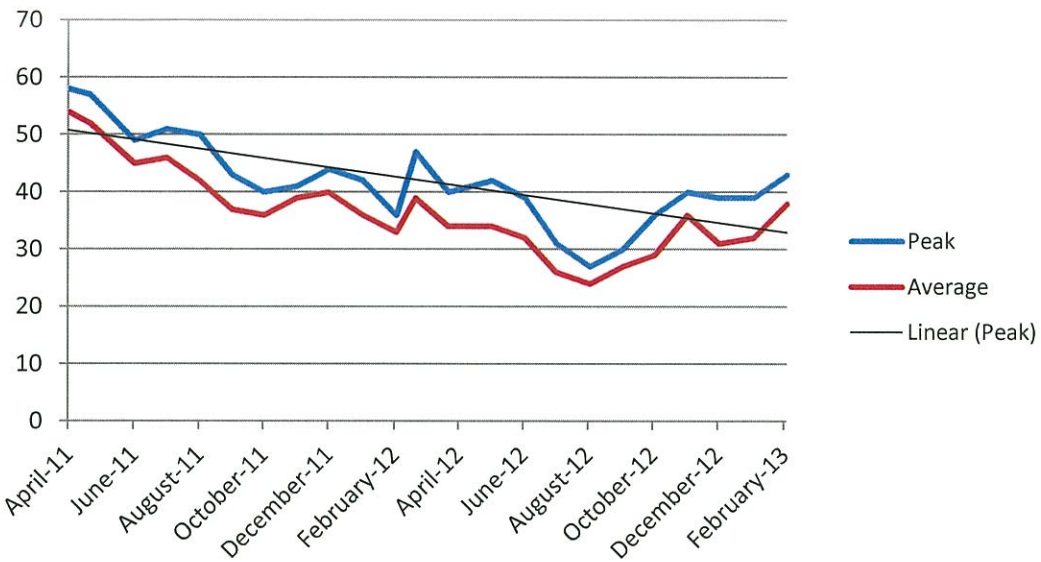


Corrections Statistics



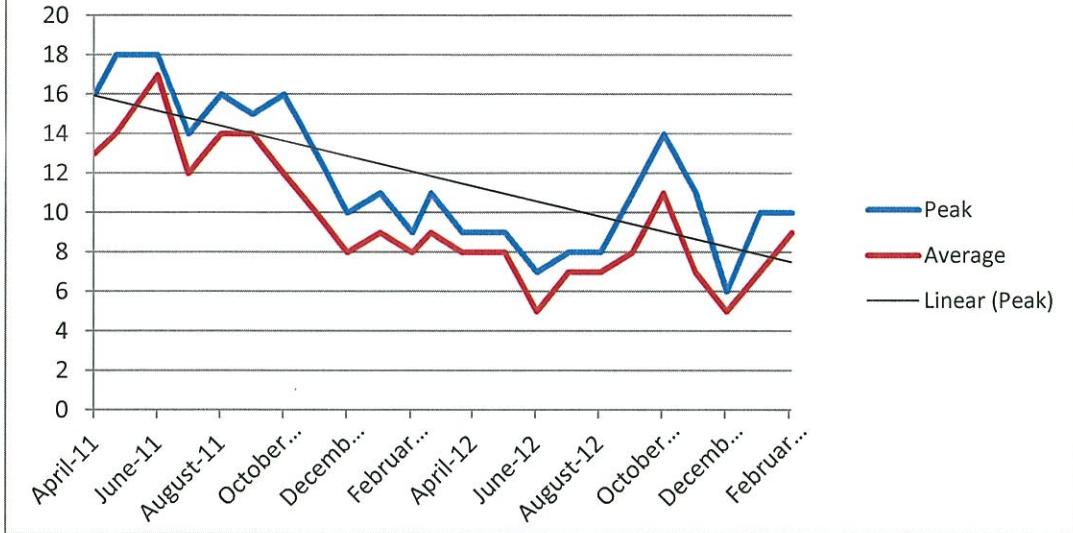
	2011/12		2012/13	
	Avg	Peak	Avg	Peak
April	174	191	145	156
May	175	192	141	158
June	172	179	133	139
July	163	174	141	149
August	158	168	128	140
September	167	179	135	146
October	164	174	135	143
November	150	168	132	142
December	137	144	137	143
January	138	147	135	145
February	139	148	135	141
March	134	142		
Yearly	156	192		

SMCC - Peak Vs. Average Counts 2011 - 2013



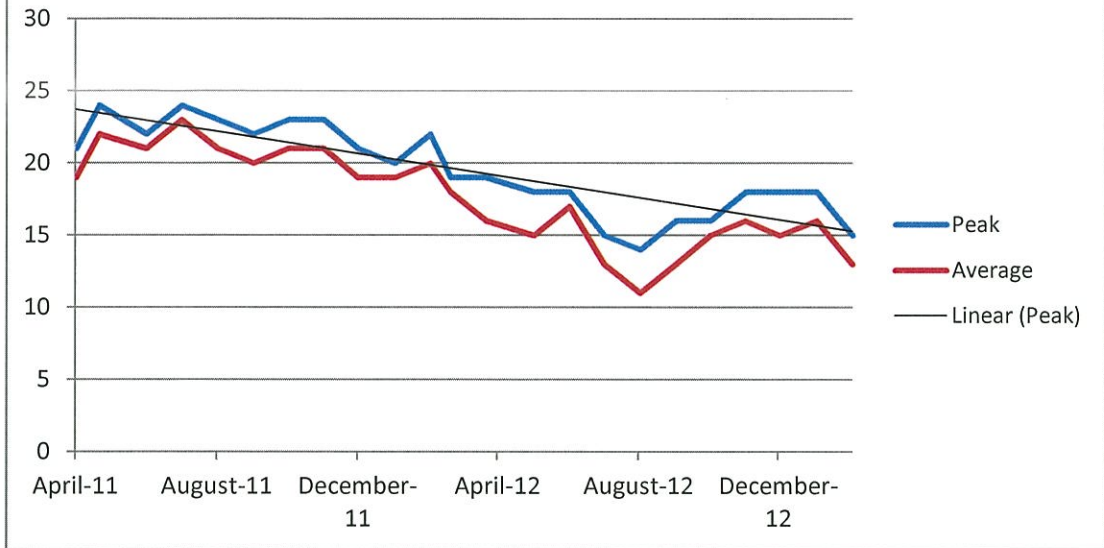
	2011/12		2012/13	
	Avg	Peak	Avg	Peak
April	54	58	34	40
May	52	57	34	42
June	45	49	32	39
July	46	51	26	31
August	42	50	24	27
September	37	43	27	30
October	36	40	29	36
November	39	41	36	40
December	40	44	31	39
January	36	42	32	39
February	33	36	38	43
March	39	47		
Yearly	41	58		

FSCC (female) - Peak Vs. Average Counts 2011 - 2013



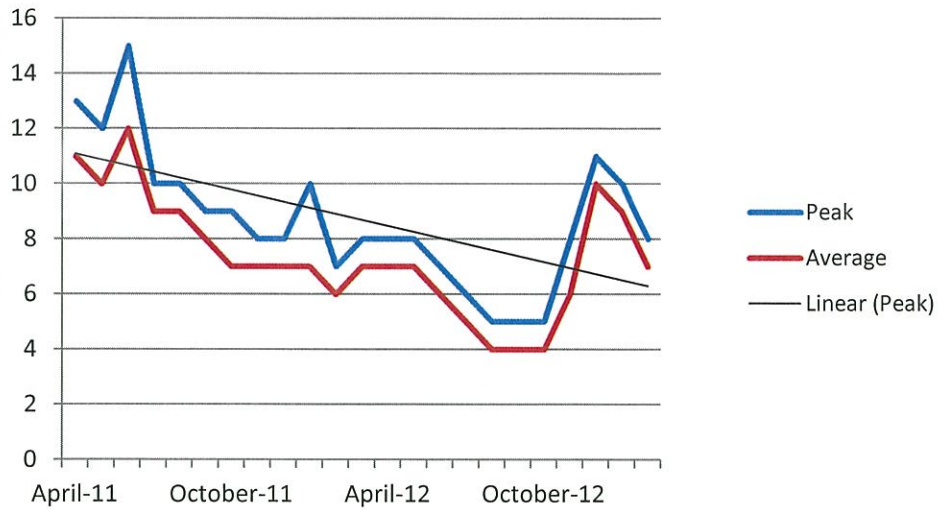
	2011/12		2012/13	
	Avg	Peak	Avg	Peak
April	13	16	8	9
May	14	18	8	9
June	17	18	5	7
July	12	14	7	8
August	14	16	7	8
September	14	15	8	11
October	12	16	11	14
November	10	13	7	11
December	8	10	5	6
January	9	11	7	10
February	8	9	9	10
March	9	11		
Yearly	12	18		

FSCC (male) - Peak Vs. Average Counts 2011-2013



	2011/12		2012/13	
	Avg	Peak	Avg	Peak
April	19	21	16	19
May	22	24	15	18
June	21	22	17	18
July	23	24	13	15
August	21	23	11	14
September	20	22	13	16
October	21	23	15	16
November	21	23	16	18
December	19	21	15	18
January	19	20	16	18
February	20	22	13	15
March	18	19		
Yearly	20	24		

North Slave YO Facility - Peak Vs. Average Counts 2011-2013



	2011/12		2012/13	
	Avg	Peak	Avg	Peak
April	11	13	7	8
May	10	12	7	8
June	12	15	6	7
July	9	10	5	6
August	9	10	4	5
September	8	9	4	5
October	7	9	4	5
November	7	8	6	8
December	7	8	10	11
January	7	10	9	10
February	6	7	7	8
March	7	8		
Yearly	8	15		

The third question asked for the number of inmates participating or who have participated in an alcohol and/or drug-related prevention program for all NWT correctional facilities for the 2011/12 fiscal year to present. The following chart provides a breakdown by facility of the number of inmates who have or are currently attending alcohol and drug related programming.

Number of inmates participating in alcohol or drug-related prevention programs for all NWT correctional facilities from 2011/12 to present		
Facility	Program	Number of Inmates Attending
South Mackenzie Correctional Centre	Nat's ejee K'eh Treatment Centre	23
	Impaired Driving Awareness Impact Review Program	25
	Alcoholics Anonymous	20
North Slave Correctional Centre	National Substance Abuse Program	43
	Alcoholics Anonymous	4
Fort Smith Correctional Complex	Matrix Program ¹	27
	Alcoholics Anonymous	7
North Slave Young Offenders Facility	Alcohol and Drug Counselling	10
	Sessions with Intern Psychologist	9
	Tree of Peace Counselling	1

¹ 16 week drug and alcohol treatment program delivered by the Wellness Centre in Fort Smith