

LEGISLATIVE ASSEMBLY OF THE
NORTHWEST TERRITORIES

8TH ASSEMBLY, 64TH SESSION

TABLED DOCUMENT NO. 19-64

TABLED ON Feb. 3, 1978

Return to Question Asked During Proceedings in Committee
of the Whole

Asked by: Mr. Dave Nickerson

Date: Tuesday, January 24, 1978

Title of Question: Flow Sheet Type Analysis of Health
Care Financing

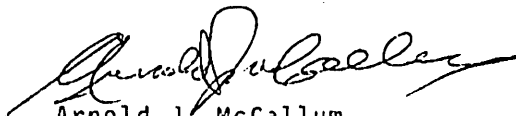
As stated in this house the matter of Health Care Financing is extremely complicated. Careful policies and procedures have been established over the years in order to handle the volume of claims and other billings in an effective and efficient manner.

In replying to the request for a flow sheet type analysis of health care financing, only the major components of the systems have been presented. There are numerous smaller components and sub-components. However, if an attempt was made to show all components on a chart it would be too confusing.

The flow charts are as follows:

- Chart #1 - Summary Flow Chart
- Chart #2 - Summary Pie Chart of Expenditures
- Chart #3 - Summary Pie Chart of Revenues
- Chart #4 - Health Services Branch Administration
- Chart #5 - Supplementary Health Programs
- Chart #6 - Northwest Territories Share and Medical Services Provided by Health and Welfare Canada
- Chart #7 - Territorial Hospital Insurance Services
- Chart #8 - Medical Care Insurance

I trust this quick and summarized response to the question raised will prove satisfactory, recognizing the very complicated systems.



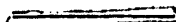


Arnold J. McCallum,
Minister for
Department of Health and
Social Services.

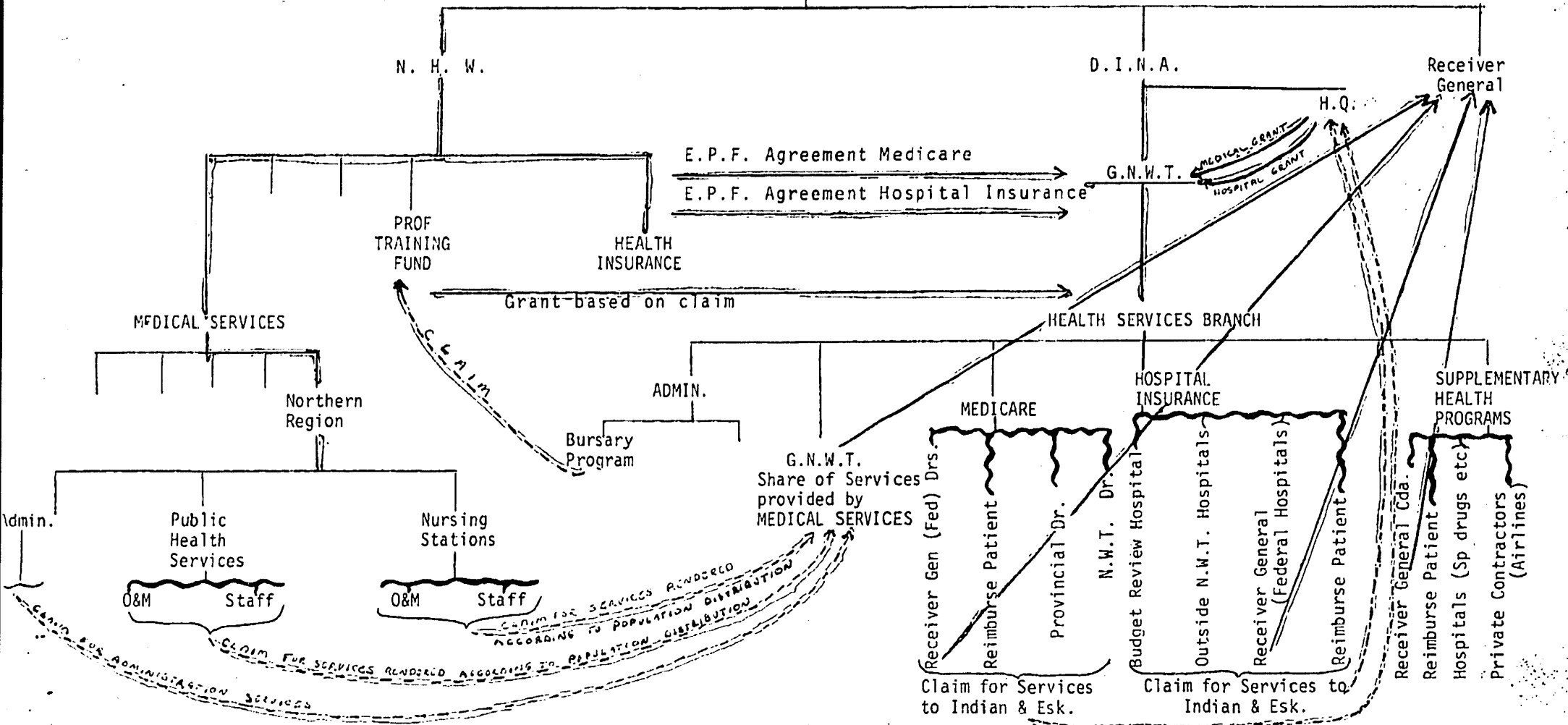
HEALTH SERVICES

Northwest Territories

Government of Canada

Legend

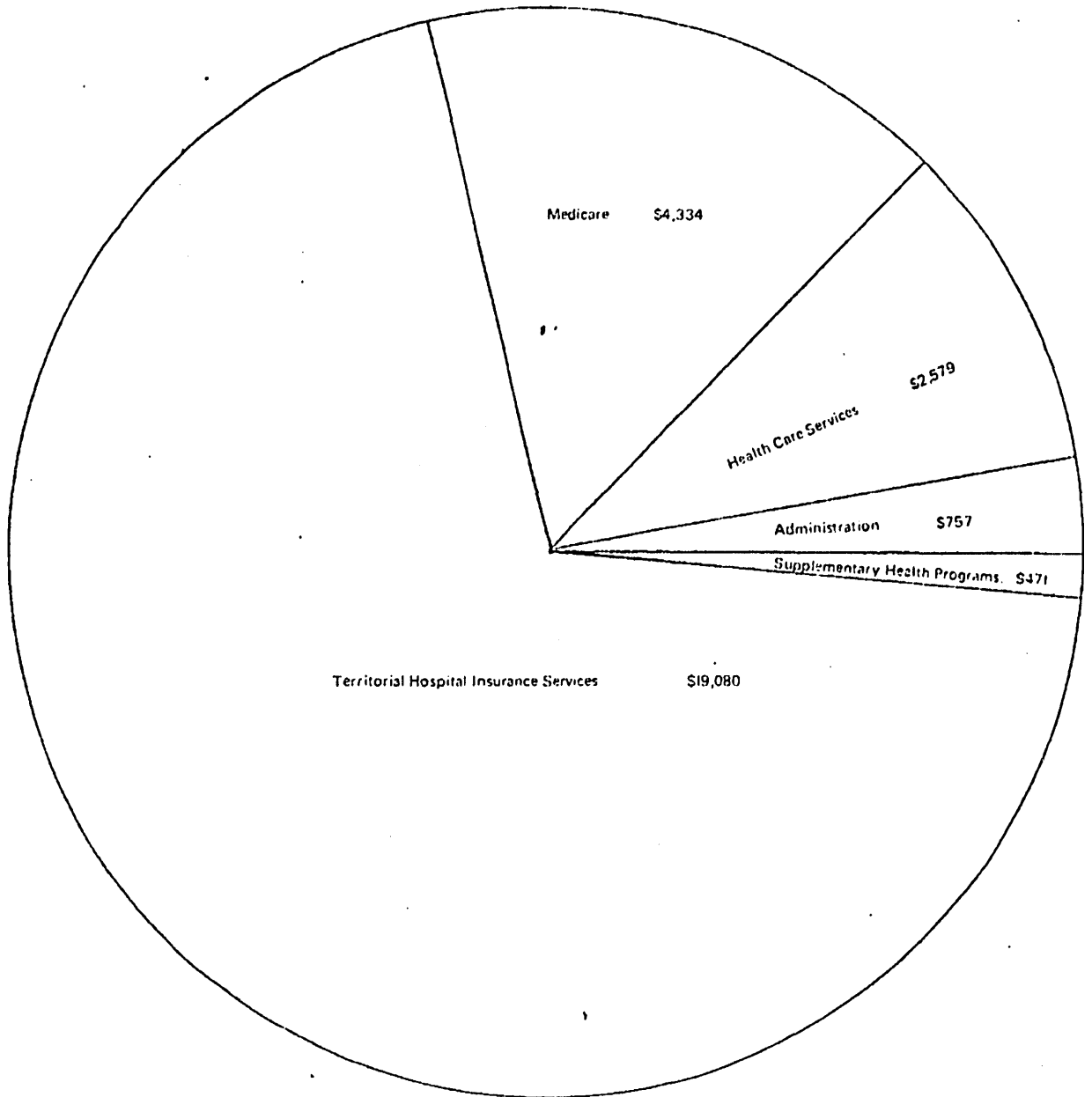
-  Revenue
-  Expenditures
-  Expenditures



Health Services Branch - Estimated Expenditures For Fiscal 1978-79

(amounts are shown in \$thousands)

Total estimated expenditures = \$27,221

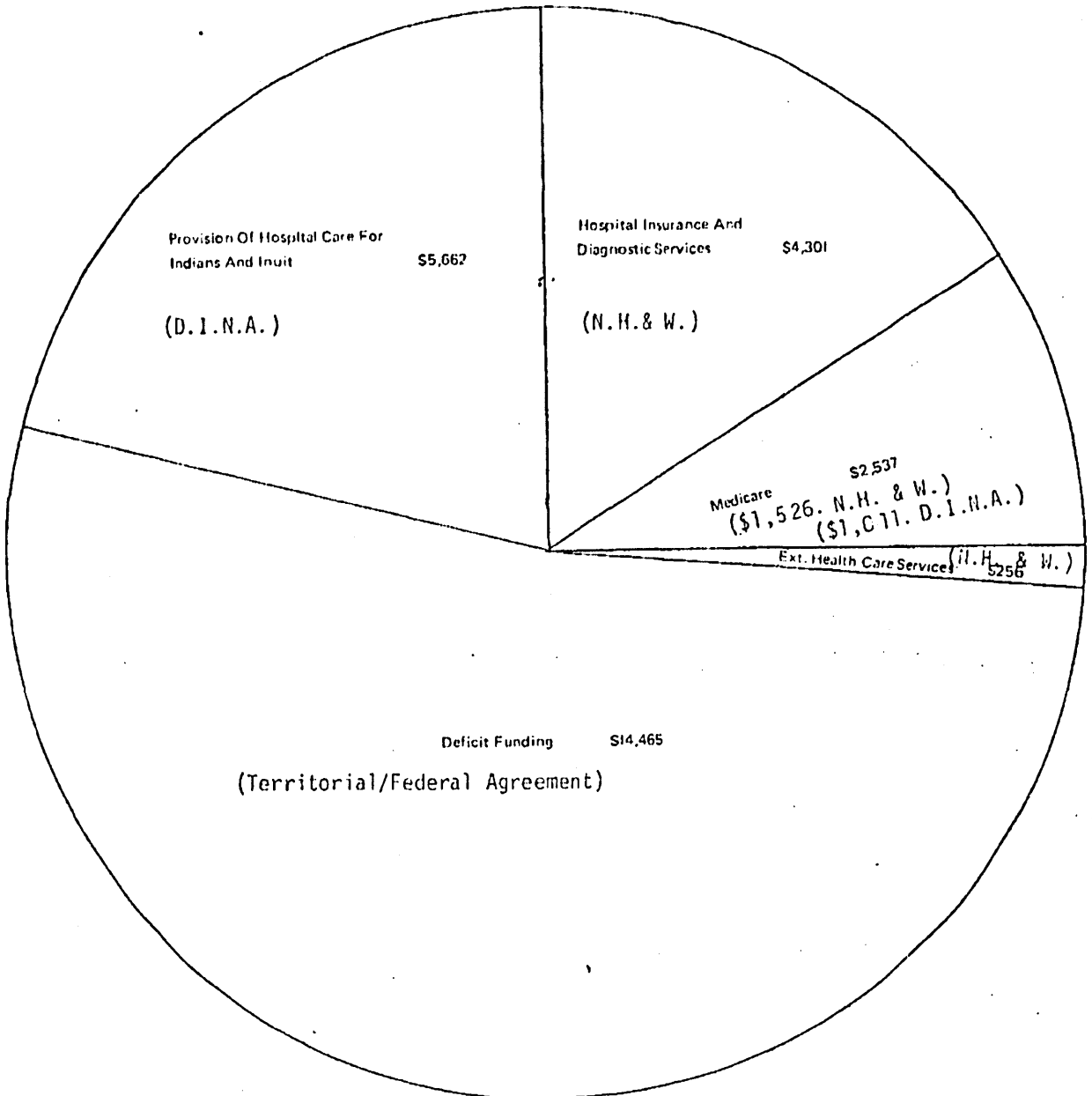


GOVERNMENT OF THE NORTHWEST TERRITORIES
 DEPARTMENT OF HEALTH AND SOCIAL SERVICES

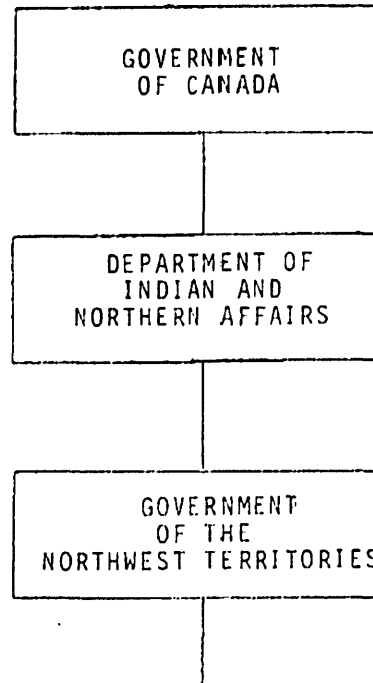
Health Services Branch - Estimated Operating Income And Deficit For Fiscal 1978-79

(amounts are shown in \$thousands)

Total estimated operating income = \$12,756
 Estimated deficit = \$14,465



Estimated Revenue and Expenditures 1978/79 (\$757)



Payments for salaries,
supplies, etc. paid
direct

Approval and Payment Mechanism

As per approved policies and procedures of the Government of the Northwest Territories.

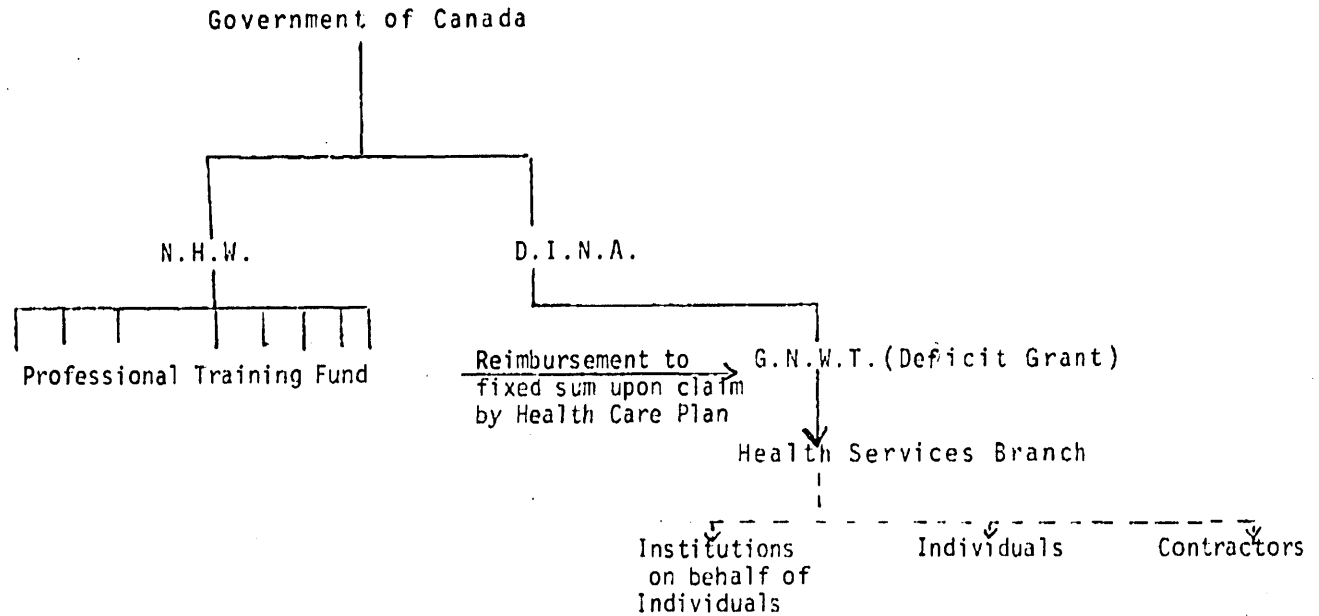
PROFESSIONAL TRAINING BURSARY PROGRAMS

Revenue ———
Expenditure - - - -

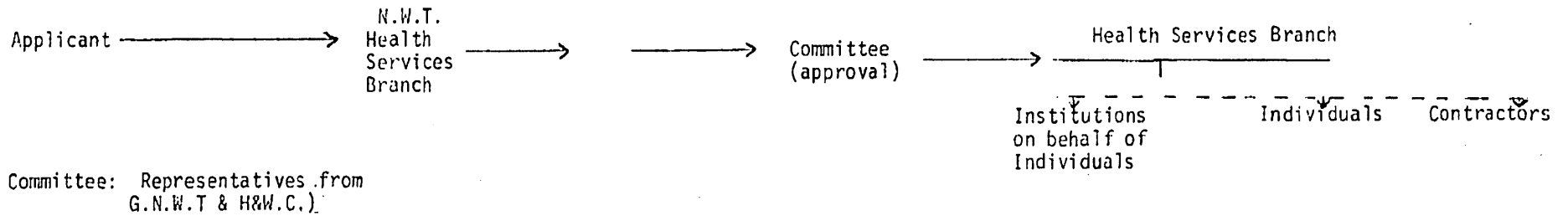
FINANCIAL SYSTEM

Components

- Student Bursaries
- Health Care Professional upgrading
- Sponsorship
- Workshops to assist in upgrading
- Seminars



Approval Mechanism:



Health Control Program
 Health Services for Indigents
 Subsidized Medical Travel

SUPPLEMENTARY HEALTH PROGRAMS

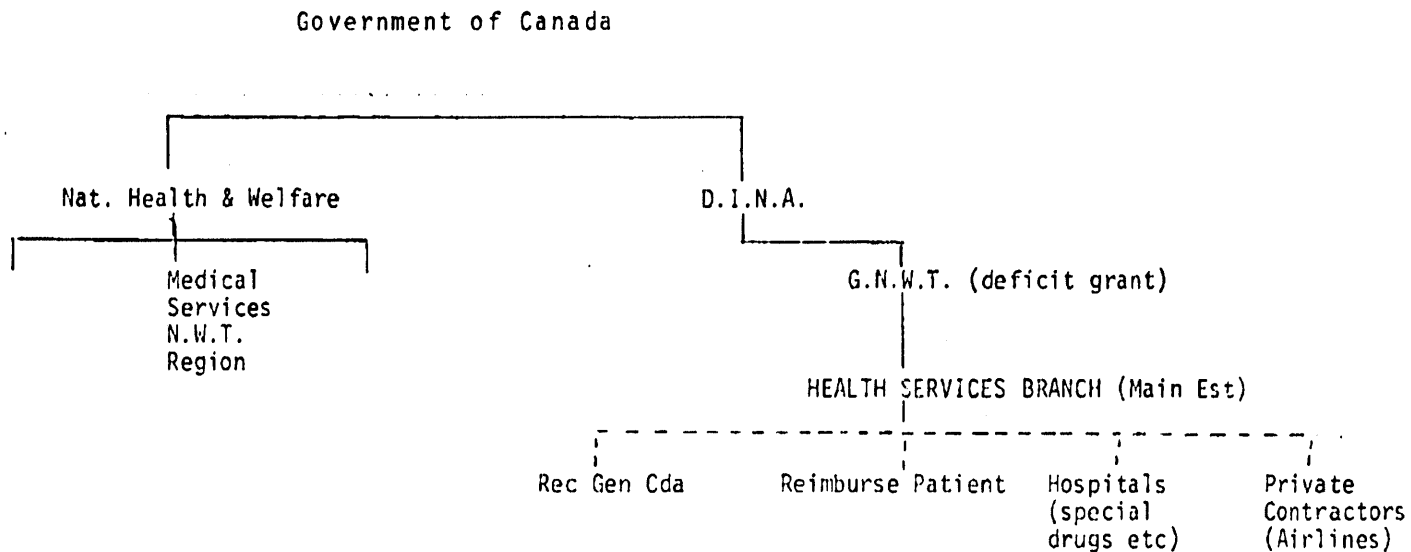
1978/79 Estimate \$471,000

Legend: _____ Revenue
 - - - - - Expenditure

A. FINANCIAL SYSTEMS

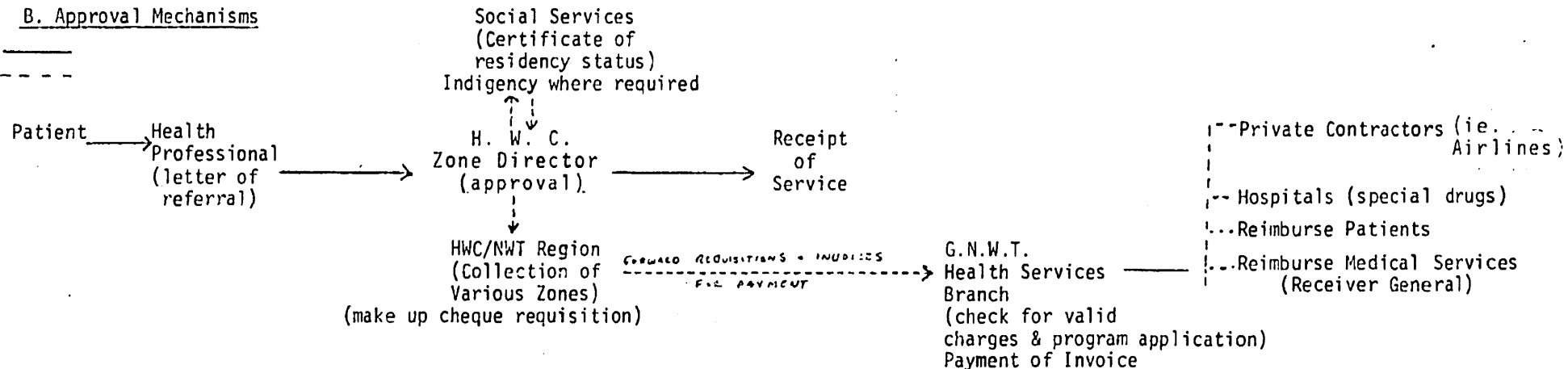
Components

1. Health Control Programs
 - Cancer
 - V.D.
 - Cystic Fibrosis
 - T.B.
 - Other Chronic
2. Subsidized Medical Travel
3. Health Services for Indigents
 - Non-insured Services re. Ambulance
 - Indigency Certified by Soc Services.



B. Approval Mechanisms

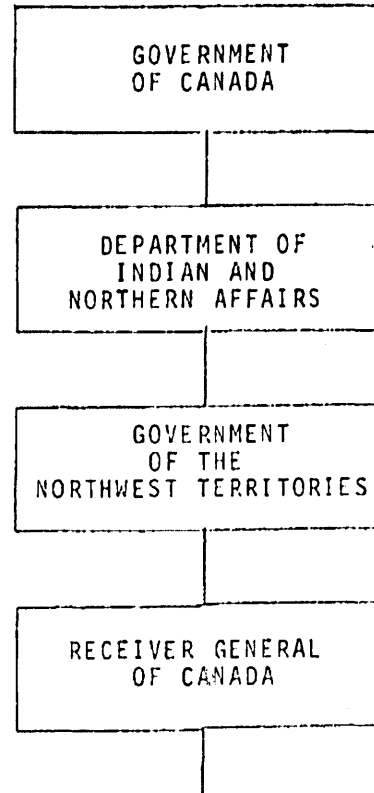
Patient _____
 Paper - - - - -



NORTHWEST TERRITORIES SHARE OF MEDICAL SERVICES
HEALTH AND WELFARE CANADA

CHART # 6

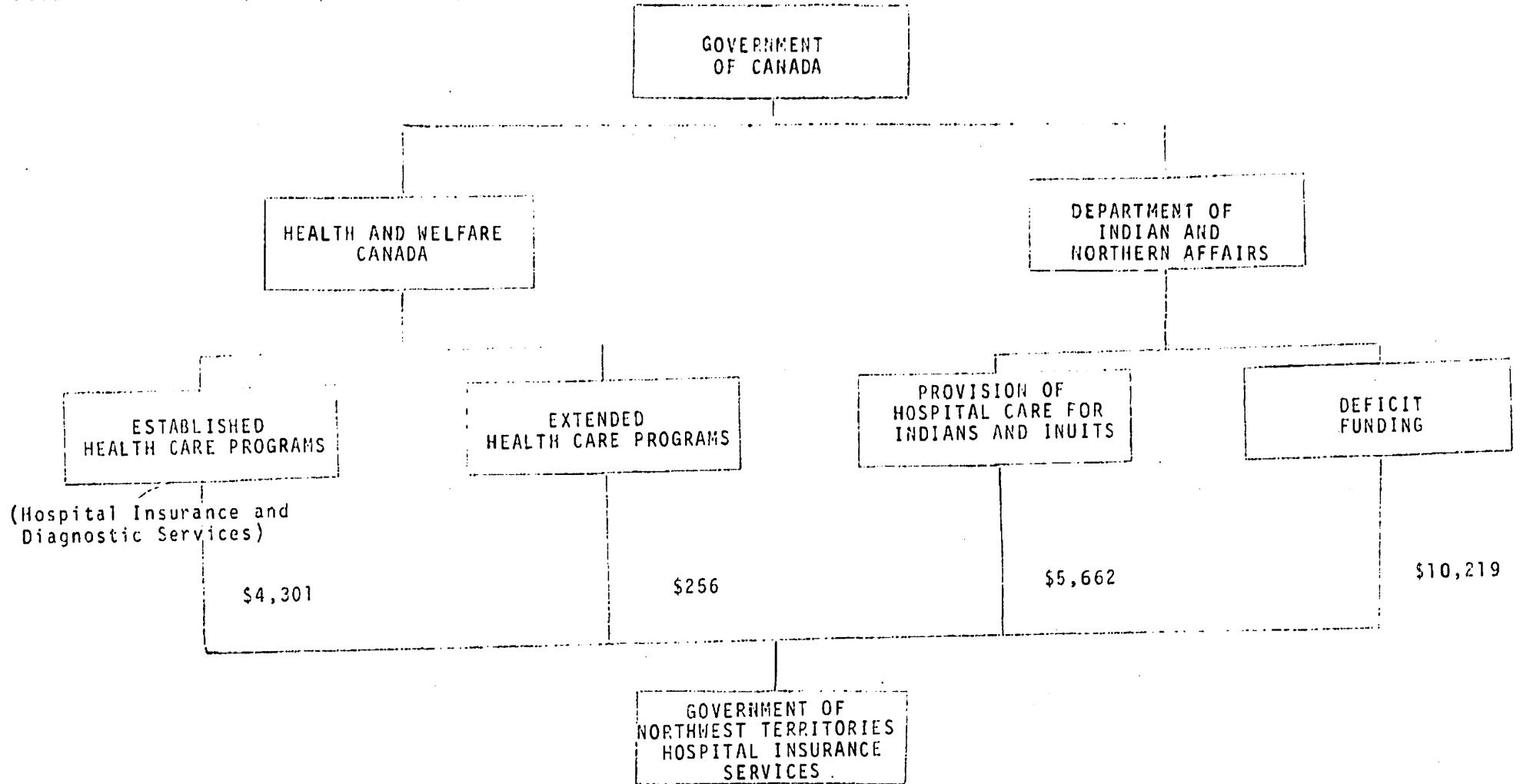
Estimated Revenue and Expenditures 1978/79
(\$1,612 0 and M, plus \$967 Capital) \$2,579



Medical Services Prepares Invoice ~~~~~> Health Services Branch Review Invoice ~~~~~> Cheque Requisition submitted for payment ———> Payment to Receiver General of Canada

HOSPITAL INSURANCE SERVICES

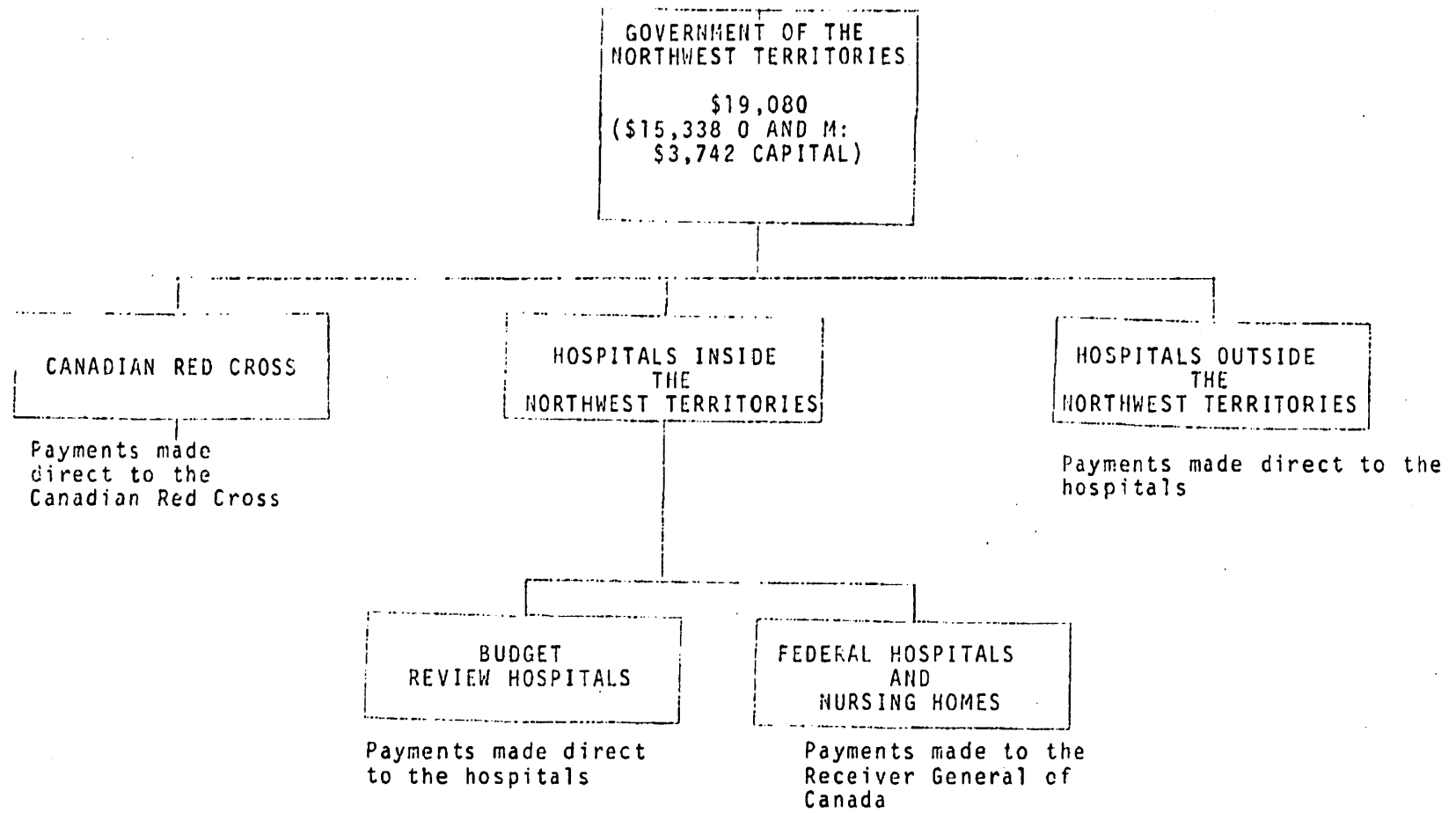
Estimated Revenue: 1978/79 Capital and Operations and Maintenance - \$19,080 (\$15,338 O and M; \$3,742 Capital)



\$19,080 (\$15,338 O and M; \$3,742 Capital)

HOSPITAL INSURANCE SERVICES

Estimated Expenditures - 1978/79 - \$19,080 (\$15,338 0 and M; \$3,742 Capital)



Patient _____
 Blood, Invoice, or Payment ~~~~~

APPROVAL AND PAYMENT MECHANISM

1) Canadian Red Cross



2) Budget Review Hospitals

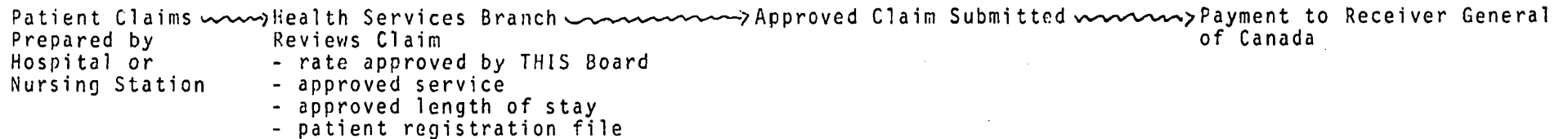


3) Federal Hospitals

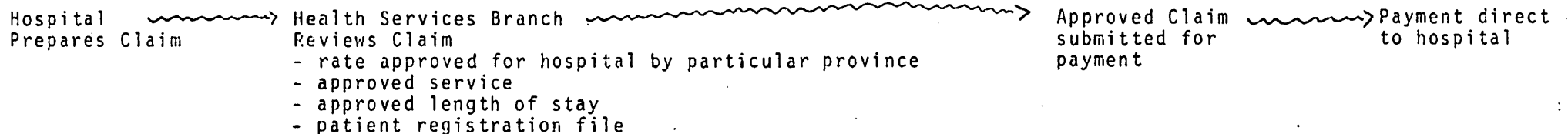
(A) Semi Budget Review Hospitals



(B) Other Federal Hospitals and Nursing Stations

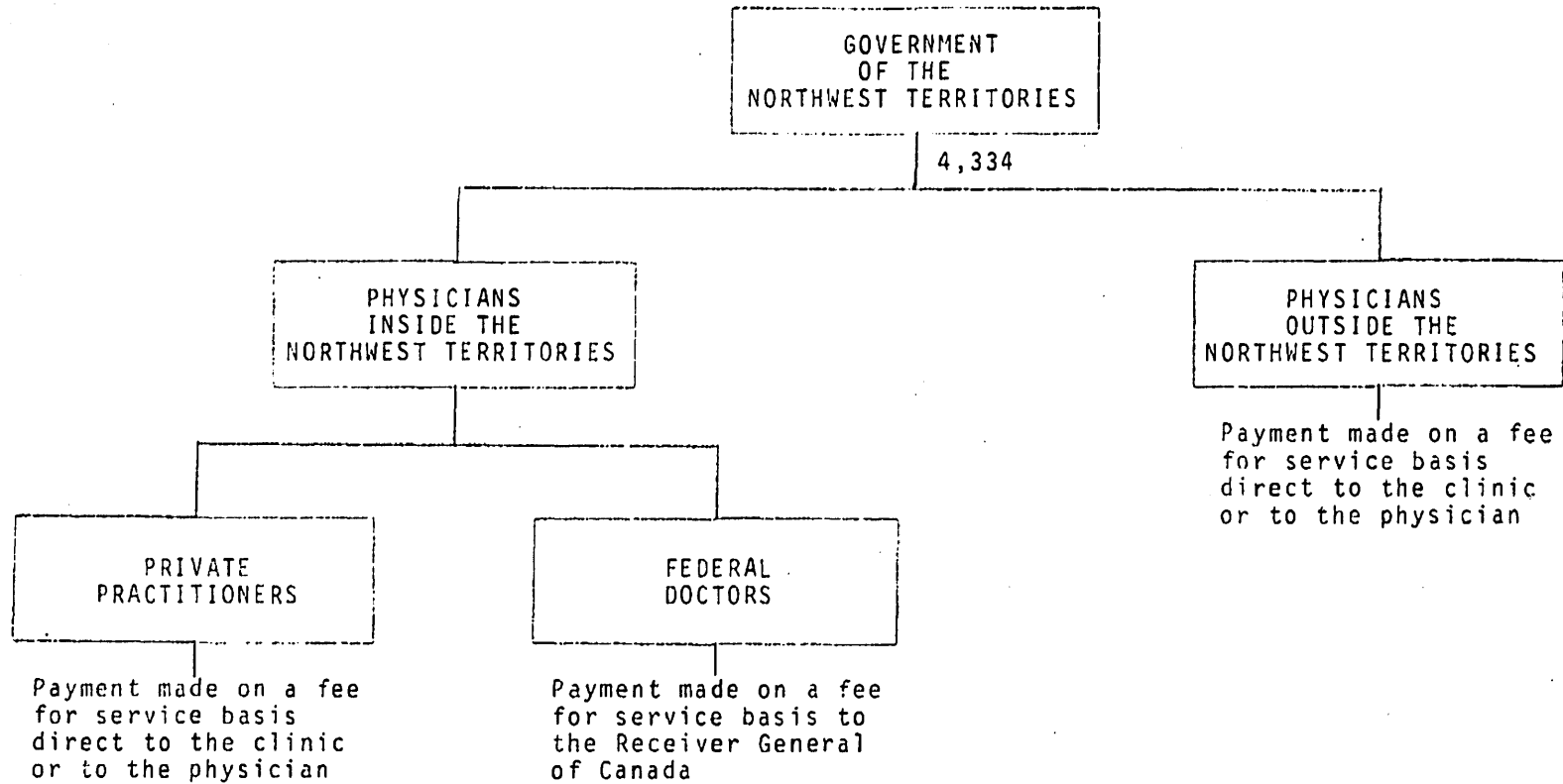


4) Hospitals Outside the Northwest Territories



MEDICAL CARE INSURANCE

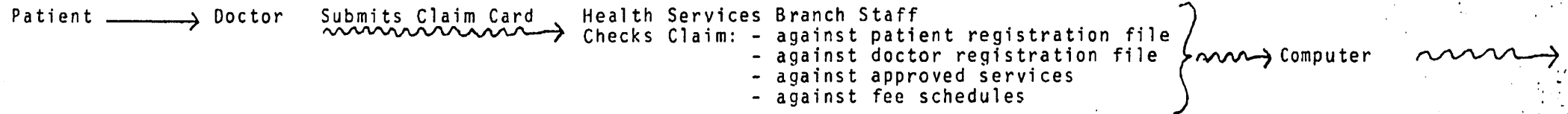
Estimated Expenditures 1978/79 - \$4,334



Approval and Payment Mechanism

_____ Patient

~~~~~ Claim Card and/or Payment



Approved Claim Submitted for Payment

Payment to

- ~~~~~ Individual Doctor or Clinic Inside N.W.T.
- ~~~~~ Receiver General for Federal Doctors
- ~~~~~ Individual Doctor or Clinic Outside N.W.T.

NB. Certain Doctors outside the N.W.T. require patient to pay for service. Patient then submits claim to Health Services Branch. The same checking and validation procedure follows and the patient is reimbursed for approved services at approved rates.

MEDICAL CARE INSURANCECHART #8

Estimated Revenue 1978/79 - \$4,334

