

**LEGISLATIVE ASSEMBLY OF THE  
NORTHWEST TERRITORIES  
9<sup>TH</sup> ASSEMBLY, 8<sup>TH</sup> SESSION**

**TABLED DOCUMENT NO. 16-82(2)**

**TABLED ON MAY 17, 1982**

TD 16-82(2)  
Tabled May 17, 1982

# Annual Report

for the period ending  
March 31, 1981



Northwest  
Territories

**Territorial Hospital  
Insurance Services**

Territorial Hospital  
Insurance Services

ANNUAL REPORT

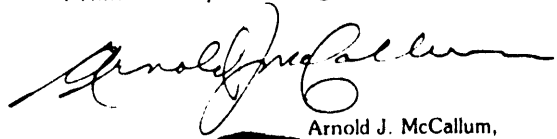
for the period ending  
March 31, 1981



1 November 1981

COMMISSIONER

I have the honour to present the Annual Report for  
T.H.I.S. for the period ending 31 March 1981.



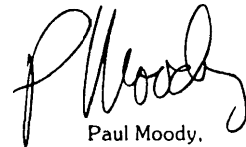
Arnold J. McCallum,  
Minister of Health.



MINISTER OF HEALTH

I am pleased to submit the Annual Report for T.H.I.S.  
for the period ending 31 March 1981.

Under the Territorial Hospital Insurance Services  
Ordinance, there is a requirement to submit an Annual  
Report.



Paul Moody,  
Deputy Minister,  
Department of Health.



**Arnold J. McCallum**  
Minister of Health



**Paul Moody**  
Deputy Minister,  
Department of Health



**Michael S. Pontus**  
Assistant Deputy Minister/Chairman T.H.I.S.  
Department of Health

## **Contents**

**Introduction**

**Organization Chart**

**Territorial Hospital Insurance Services**

**T.H.I.S. Claims Processing System**

**T.H.I.S. Financial Information**

**Notes on Statistical Tables**

**Table 1: Rated Bed Capacity of Health Facilities in the Northwest Territories — 1980-81**

**Table 2: Utilization of Northwest Territories Hospitals and Nursing Stations - 1980-81**

**Table 3: Utilization of Hospital Services In and Outside the Northwest Territories by Community 1980-81**

**Table 4: Comparison of Utilization of Hospital and Nursing Station Services by Region - 1980-81**

**Table 5: Utilization of Hospital Services Outside the Northwest Territories by Province - 1980-81**

**Table 6: Payments Made to Hospitals During 1979/80 and 1980/81**

**Table 7: Utilization of In-Patient (Adult and Child) Services by Region — 1980-81**

**Table 8: Utilization of Newborn Services by Region - 1980-81**

**Table 9: Utilization of Outpatient Services by Region 1980-81**



## Introduction

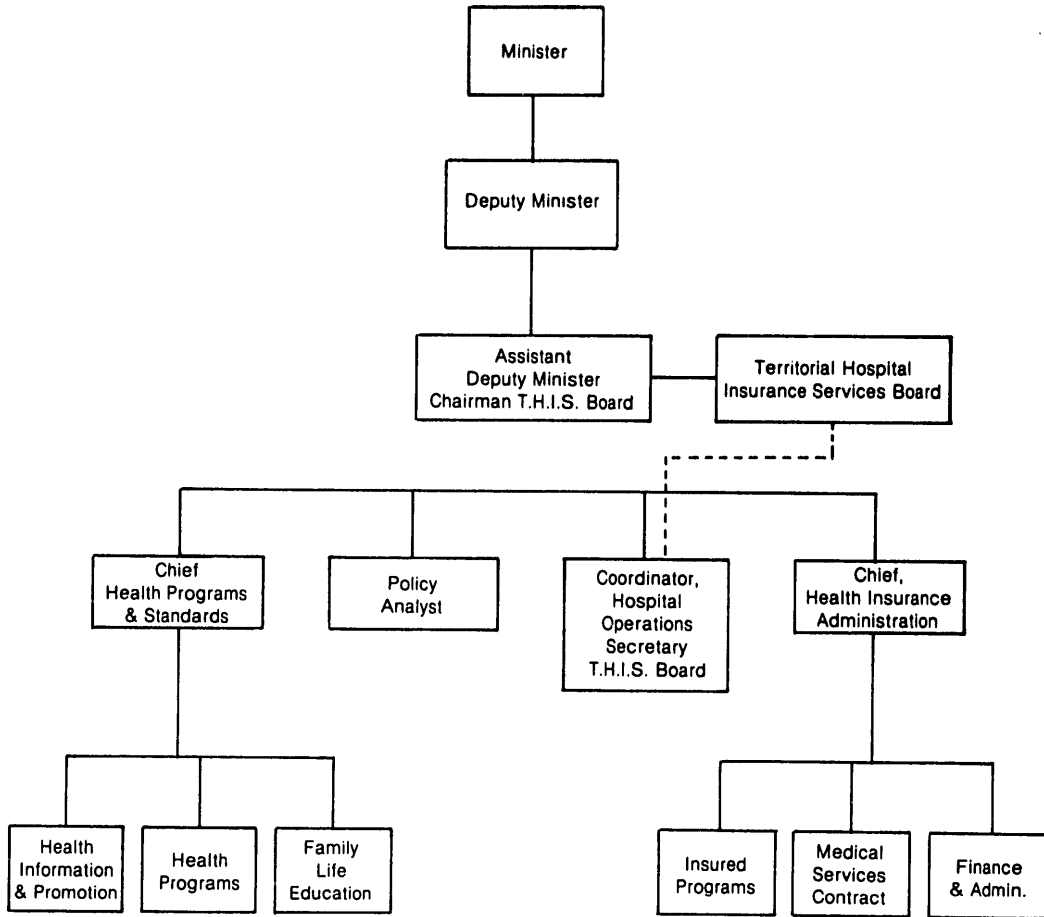
The Northwest Territories Hospital Insurance Plan provides coverage, with no premiums payable, for a comprehensive range of hospital services for residents of the Territories.

The Government of the Northwest Territories administers and operates the Hospital Insurance Plan in accordance with the provisions of the Territorial Hospital Insurance Services (T.H.I.S.) Ordinance. The Hospital Insurance Plan is administered by the Department of Health under the direction of the T.H.I.S. Board.

This annual report for T.H.I.S. describes the programs and provides statistics and financial information for the year ended March 31, 1981.



**Department of Health and T.H.I.S.  
Organization Chart  
As of March 31, 1981**



## Territorial Hospital Insurance Services:

### Board Members as of March 31, 1981

Michael S. Pontus	— Yellowknife (Chairman)
Bertha Allen	— Inuvik
Peter Taitt	— Rankin Inlet
Peter Anderson	— Fort Rae/Edzo
Gloria Wood	— Cambridge Bay
The Reverend Ken Gaetz	— Hay River
Leon Peterson	— Fort Smith
Dave Emery	— Yellowknife
Ray J. Racette	— Yellowknife (Secretary)

The N.W.T. Hospital Insurance Plan is administered under the direction of the Territorial Hospital Insurance Services (T.H.I.S.) Board, a body corporate whose members are appointed by the Commissioner in Council. The Department of Health provides support services to the Board on matters falling under its jurisdiction.

### Major responsibilities of the T.H.I.S. Board are:

1. to develop and administer the Hospital Insurance Plan;
2. to determine eligibility for, and entitlement to, insured inpatient and outpatient hospital services;
3. to determine the amounts that may be paid to hospitals and related health facilities both in and outside the Territories in respect of the cost of insured services provided by those facilities to eligible residents of the N.W.T.;

4. to enter into agreements on behalf of the Territories with hospitals and related health facilities in or outside the Territories, or with the Government of Canada or any province or an appropriate agency thereof, for the provision of insured services to eligible residents of the N.W.T.;
5. to ensure that adequate standards are maintained in hospitals and related health facilities; and
6. to develop and maintain a coordinated system of hospitals and health related facilities throughout the Territories.

The T.H.I.S. Board met four times during 1980/81. Important decisions which the Board made during the years included: approval to initiate planning for a new 135 bed hospital in Yellowknife; approval for a N.W.T. Nursing home program; approval and funding of specialty programs in Psychiatry, Obstetrics /Gynecology and Orthopedics at Stanton Yellowknife Hospital; approval to renovate the mechanical/ventilation system at Stanton Yellowknife Hospital; funding of the Central Arctic Regional Health Study; approval to enter an agreement with Manitoba for the reciprocal billing of inpatient hospital claims; approval of a Capital Projects Process for directing all future Capital projects funded by T.H.I.S.; approval of a new semi-global budget policy for budget review hospitals; the review and approval of the 1980/81 Capital and O&M budgets for the Budget Review Hospitals and the establishment of 1980/81 inpatient, newborn and outpatients rates for the N.W.T. health facilities.



## Accreditation

Accreditation is a review and examination of a hospital's policies, practices and standards as compared to the established standards for hospitals in Canada. To undergo the accreditation review is a voluntary decision taken by hospitals wishing to indicate their compliance with the established standards of hospital care.

Fort Smith Health Centre; H. H. Williams Memorial Hospital; Stanton Yellowknife Hospital; Frobisher Bay General Hospital and Inuvik General Hospital have all been awarded accreditation by the Canadian Council on Hospital Accreditation.

## Benefits Under the Hospital Insurance Plan

### Eligibility

All persons registered under the N.W.T. Health Care Plan are eligible for benefits under both the Hospital Insurance Plan and Medicare. For newcomers from a province or the Yukon Territory who are establishing permanent residence in the N.W.T., there is a three month waiting period for benefits; however, during this three month period, they are covered under their former provincial or territorial plans.

Exceptions to the three month waiting period are:

1. discharged Federal inmates who are granted first day coverage.
2. members of the National Defense or the R.C.M.P. leaving the forces who are granted first day coverage.
3. landed immigrants who are granted first day coverage.
4. DEW line employees who are eligible after one year.

### Coverage of Insured Services

Coverage for eligible persons, under the Hospital Insurance Plan is extended throughout the world. In other parts of Canada, the Plans pay for insured services at the rates established in the province in which they are provided. For approved services received outside Canada, eligible persons will be reimbursed up to the rates set for the N.W.T. When the amount billed exceeds the N.W.T. rate, payment of the difference becomes the patient's responsibility.

## Synopsis of Benefits Covered Under the Hospital Insurance Plan

### Inpatient Insured Services

1. accommodation and meals at the standard or public ward level.
2. necessary nursing services.
3. laboratory, radiological, and other procedures together with the necessary interpretations for the purpose of assisting in the diagnosis or treatment of any injury, illness or disability.
4. drugs, biologicals, and related preparations when administered in a hospital.
5. use of operating room, case room and anaesthetic facilities including necessary equipment and supplies.
6. radiotherapy treatment, occupational therapy, physiotherapy and speech therapy in an approved hospital.
7. other health care support services provided in the hospital by employees.

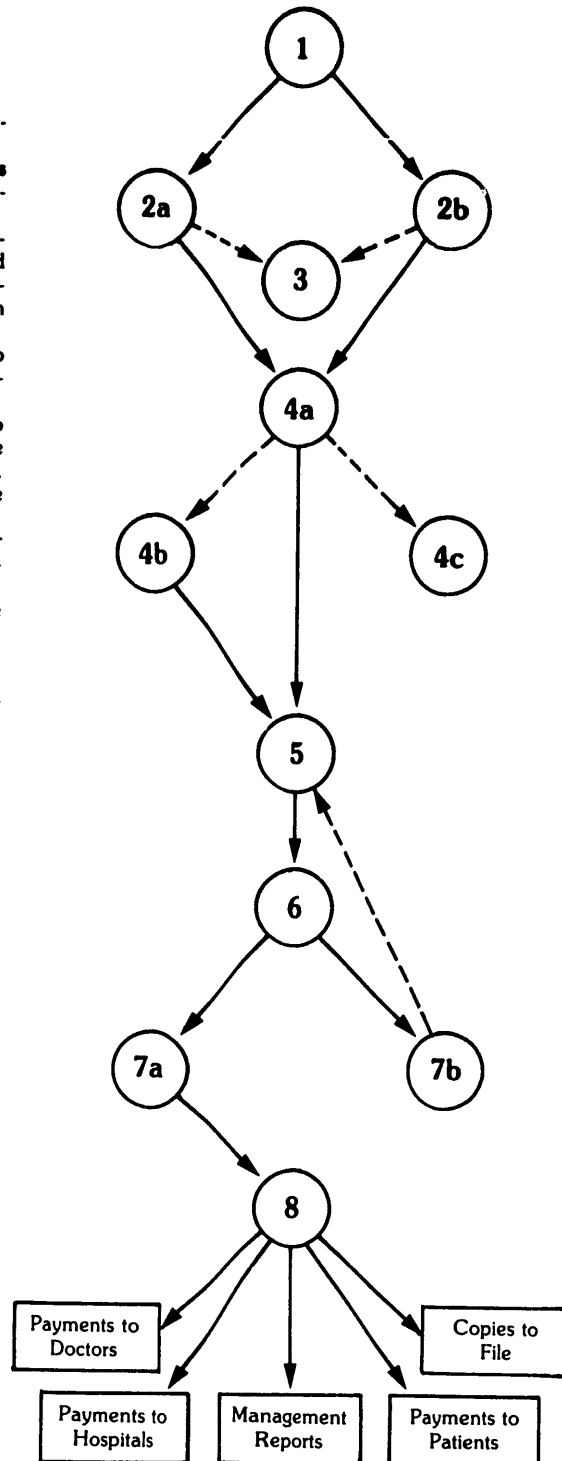
### Outpatient Insured Services

1. laboratory tests and x-rays and necessary interpretations when requested by a physician and when performed in an outpatient facility in an approved hospital.
2. hospital services in connection with most minor medical and surgical procedures.
3. emergency services when provided in the outpatient facility of an approved hospital for the purpose of diagnosis or treatment of an injury, illness or disability.
4. physiotherapy, occupational therapy, radiotherapy, and speech therapy services in an approved hospital.
5. psychological services for medical reasons when requested by a physician and provided through an approved hospital program.

A complete list of insured benefits is set out in the Territorial Hospital Insurance Services Regulations.

## T.H.I.S. and Medicare Processing System

1. Claims are received from physicians/hospitals/patients and are date stamped.
- 2a. Assessment staff check N.W.T. and Alberta claims for completeness and accurate codes. Where possible, necessary changes are made.
- 2b. Out-of-province claims for N.W.T. residents — except for Alberta claims — are coded and transcribed onto N.W.T. claim cards. Any claims with out-of-Territory addresses are then sent to the Registration Section for verification of eligibility.
3. Incomplete or ineligible claims are returned to physicians/hospitals/patients for the required additional information.
- 4a. Assessed claims are sent to Doctor Registration to verify that the physicians are registered, or eligible to be registered, with the N.W.T. Health Care Plan.
- 4b. If physicians are not registered, but deemed eligible for registration, their registrations are processed.
- 4c. Claims submitted by physicians ineligible for registration are returned to physicians/hospitals/patients.
5. Claims are sent to data entry personnel within the Department of Health.
6. A computer edit and assessment is carried out.
- 7a. Valid claims are processed for payment.
- 7b. Rejected claims are returned to assessment staff for manual assessment and correction. Corrected claims are returned to keypunch personnel.
8. There is a bimonthly payment run.



**T.H.I.S. Financial Information**  
**For the Period April 1, 1980 to March 31, 1981 — unaudited**

Expenditures	Operating 000's	Capital 000's	Total 000's
<b>Territorial Hospital Insurance Services</b>			
Budget Review Hospitals	\$ 9,258		\$ 9,258
Semi Budget Review Hospitals	3,506		3,506
Other Hospitals	5,495		5,495
Stanton Yellowknife Hospital		\$ 660	660
Cambridge Bay Regional Health Study		72	72
<b>Total</b>	<b>\$18,259</b>	<b>\$ 732</b>	<b>\$18,991</b>
<b>Revenue Recoveries</b>			
Recoveries under E.P.F. <sup>1</sup> — Hospitals			\$ 5,292
Grants for Hospital Care — Ind and Inuit			6,559
Other — Recovery of Previous Year Expenditures			20
Extended Health Care			289
Hay River Health Centre			84
<b>Total</b>			<b>\$ 12,244</b>

<sup>1</sup> Cash Payments only; tax point transfer values are not reflected.



## Notes on Statistical Tables

The tables in this report provide 1980/81 utilization and cost data associated with the provision of insured hospital services to residents of the N.W.T.

Due to computer malfunction, the statistical reports for the 1980-81 year are missing 6 weeks of information that is non-recoverable. Financial information, however, is correct.

The notes have been provided to assist with the interpretation of the tables.

### Table 1

Table 1 indicates the rated bed capacity of health facilities in the N.W.T.

### Table 2

Table 2 reflects the utilization inside the N.W.T. of inpatient, and outpatient services which are covered under the Territorial Hospital Insurance Plan. The totals do not include services which are covered by other funding agencies such as the Workers' Compensation Board.

Budget Review Hospitals provided 65.3% (28,067 days) of the total inpatient days of care (Adult, children and newborn) and 31.4% (19,364 visits) of the total outpatient visits.

Federal hospitals and nursing stations provided 34.7% (14,907 days) of the total inpatient days of care, and 68.6% (42,259 visits) of the total outpatient visits.

### Table 3 and 4

Table 3 reflects the total utilization of inpatient, newborn and outpatient services in and outside the N.W.T. which are covered under the Territorial Hospital Insurance Plan. The totals do not include services which are covered by other funding agencies such as the Workers' Compensation Board.

Table 4 expresses the utilization data from Table 3 in terms of the number of inpatient days of care, newborn days of care and outpatient visits, respectively, per 100 residents in each of the 4 regions.

Residents of the Keewatin and Central Arctic Region utilize the highest number of inpatient and newborn days of care on a per capita basis.

Residents of the Inuvik Region utilize significantly more outpatient services, on a per capita basis, than do residents of all other Regions.

### Table 5

Table 5 illustrates the amount of hospital services provided to N.W.T. residents outside the N.W.T.

Alberta continues to provide approximately 50% of referred hospital services.

Alberta, Manitoba, and Quebec combined provided 89% of all out of Territories patient days to N.W.T. residents.

### Table 6

Table 6 compares the payments made to hospitals in and outside the N.W.T. during 1979/80 and 1980/81.

Total hospital payments made to hospitals inside the N.W.T. was slightly higher (3%) in 1980/81.

### Table 7

Table 7 illustrates on a regional basis the utilization of inpatient services by residents of the N.W.T.

The average length of stay was higher for the Keewatin and Central Arctic Regions.

### Table 8

Table 8 presents on a regional basis the number of newborn services utilized by residents of the N.W.T.

### Table 9

Table 9 presents on a regional basis the number of outpatient visits made by residents of the N.W.T.

**Table 1**  
**Rated Bed Capacity of Health Facilities**  
**in the Northwest Territories — 1980/81\***

Location	Name	Beds	Cribs	Bassinets
<b>Budget Review Hospitals</b>				
Fort Smith	Fort Smith Health Centre	25		7
Hay River	H.H. Williams Memorial	50		10
Yellowknife	Stanton Yellowknife	72		9
<b>Budget Review Total</b>		<b>147</b>		<b>26</b>
<b>Federal Hospitals and Nursing Stations</b>				
Frobisher Bay	Frobisher Bay General	34		9
Inuvik	Inuvik General (chronic care 10, T.B. 10)	55		10
Fort Simpson	Fort Simpson General	14		4
Rae-Edzo	Edzo Cottage Hospital	8		2
Aklavik	Aklavik N/S	5		2
Arctic Bay	Arctic Bay N/S	2		1
Baker Lake	Baker Lake N/S	3		2
Belcher Island (Sanikiluaq)	Belcher Islands N/S	2		1
Broughton Island	Broughton Island N/S	5	1	1
Cambridge Bay	Cambridge Bay N/S	6		2
Cape Dorset	Cape Dorset N/S	3		1
Chesterfield Inlet	Chesterfield Inlet N/S (Rehab. 1 - opened 7 July, 1977)	1		1
Clyde River	Clyde River N/S	5		1
Coppermine	Coppermine N/S	4		1
Coral Harbour	Coral Harbour N/S	2		1
Eskimo Point	Eskimo Point N/S	4		2
Fort Franklin	Fort Franklin N/S	5		2
Fort Good Hope	Fort Good Hope N/S	4		1
Fort Liard	Fort Liard N/S	2		1
Fort McPherson	Fort McPherson N/S	5		2
Fort Norman	Fort Norman N/S	4		1
Fort Providence	Fort Providence N/S	4		1
Fort Resolution	Fort Resolution N/S	4		1
Fort Wrigley	Fort Wrigley N/S	2		1
Gjoa Haven	Gjoa Haven N/S	5	1	2
Grise Fiord	Grise Fiord N/S	2		1
Hall Beach	Hall Beach N/S (Fuxe)	4		1
Holman Island	Holman Island N/S	2	1	1
Iqloolik	Iqloolik N/S	7		1

Location	Name	Beds	Cribs	Bassinets
Lake Harbour	Lake Harbour N/S	2		1
Nanisivik	Nanisivik N/S	6		1
Norman Wells	Norman Wells N/S	10		2
Pangnirtung	Pangnirtung N/S	7		1
Pelly Bay	Pelly Bay N/S	2	1	1
Pond Inlet	Pond Inlet N/S	7		1
Rankin Inlet	Rankin Inlet N/S	4		3
Repulse Bay	Repulse Bay N/S	1		1
Resolute Bay	Resolute Bay N/S	2		1
Sachs Harbour	Sachs Harbour N/S	2		—
Snowdrift	Snowdrift N/S	1	1	1
Spence Bay	Spence Bay N/S	3	1	2
Tuktoyaktuk	Tuktoyaktuk N/S	5		1
Whale Cove	Whale Cove N/S	1		1
<b>Federal Total</b>		<b>256</b>	<b>6</b>	<b>74</b>
<b>Total Rated Capacity at Year End</b>		<b>403</b>	<b>6</b>	<b>100</b>

\* Figures taken from Canadian Hospital Association Directory, 1980

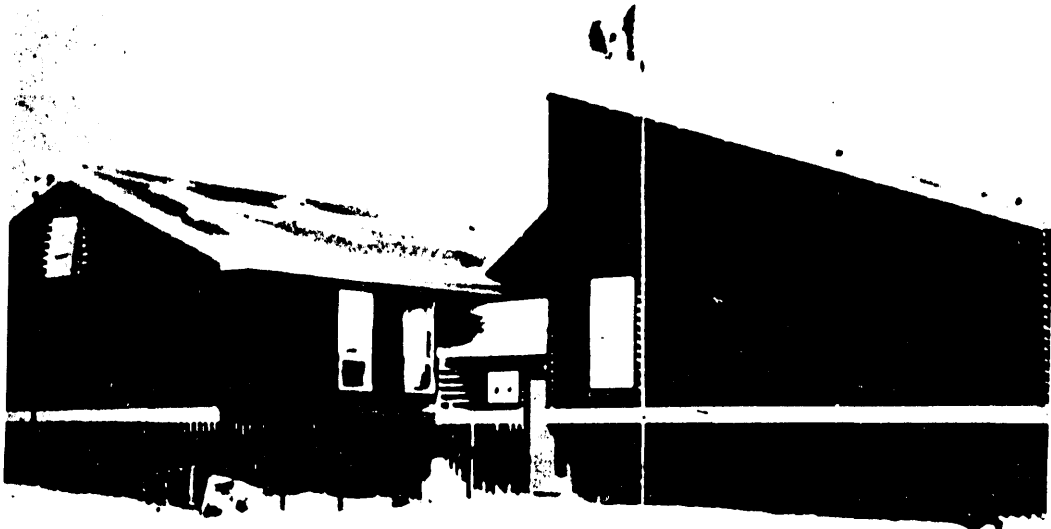




**Table 2**  
**Utilization of Northwest Territories**  
**Hospitals and Nursing Stations — 1980/81**

Province/Territory	Inpatient (Adult & children and Newborn)		Outpatient Visits
	Separations	Days of Care	
<b>Budget Review Hospitals</b>			
H. H. Williams Memorial	1,190	6,791	3,387
Stanton Yellowknife	3,271	19,848	12,803
Fort Smith Health Centre	283	1,428	3,174
<b>Sub-Total — Budget Review</b>	<b>4,744</b>	<b>28,067</b>	<b>19,364</b>
<b>Federal Hospitals and Nursing Stations</b>			
Fort Simpson General	168	1,199	1,203
Edzo Cottage	152	825	2,212
Frobisher Bay General	1,040	4,790	259
Inuvik General	1,223	7,389	11,320
Eskimo Point N/S	17	18	1,269
Baker Lake N/S	15	19	945
Rankin Inlet N/S	25	27	1,319
Coral Harbour N/S	5	5	494
Repulse Bay N/S	10	10	328
Whale Cove N/S	12	16	179
Sanikiluaq N/S	6	6	310
Chesterfield Inlet N/S	3	3	370
Fort Resolution N/S	5	5	1,094
Fort Providence N/S	11	21	1,062
Fort Liard N/S	22	26	746
Coppermine N/S	21	22	857
Cambridge Bay N/S	14	17	741
Spence Bay N/S	40	63	640
Gjoa Haven N/S	26	47	933
Fort Wrigley N/S	3	7	403
Snowdrift N/S	6	7	841
Holman Island N/S	5	10	192
Pelly Bay N/S	12	19	589
Cape Dorset N/S	15	17	1,160
Hall Beach N/S	16	17	694
Pond Inlet N/S	15	21	1,055
Arctic Bay N/S	14	32	411
Igloolik N/S	20	23	618
Broughton Island N/S	7	11	693
Clyde River N/S	8	10	574
Resolute Bay N/S	4	8	208
Grise Fiord	—	—	82
Pangnirtung N/S	22	25	2,090
Lake Harbour N/S	7	7	562
Nanisivik N/S	4	4	339
Aklavik N/S	6	6	1,254
Tuktoyaktuk N/S	58	59	1,259

Province/Territory	Inpatient (Adult & children) and Newborn		Outpatient Visits
	Separations	Days of Care	
Fort McPherson N/S	15	25	601
Fort Good Hope N/S	8	24	680
Fort Norman N/S	7	8	148
Fort Franklin N/S	29	33	520
Norman Wells N/S	15	16	657
Sachs Harbour N/S	9	10	348
<b>Sub Total — Federal</b>	<b>3,120</b>	<b>14,907</b>	<b>42,259</b>
<b>Total in N.W.T.</b>	<b>7,864</b>	<b>42,974</b>	<b>61,623</b>



**Table 3**  
**Utilization of Hospital Services In and Outside**  
**The Northwest Territories by Community – 1980/81**

	Inpatient Adult and Child		Newborn		Outpatient # Visits
	Services*	Days of Care	Services	Days of Care	
<b>Fort Smith Region</b>					
Yellowknife	2,160	12,298	247	1,246	16,449
Fort Smith	429	2,531	39	215	3,385
Fort Providence	95	833	7	35	1,090
Fort Resolution	101	744	9	59	1,144
Fort Simpson	233	1,925	20	106	1,768
Hay River	890	5,735	68	370	4,265
Jean Marie River	4	21	—	—	31
Lac La Martre	68	577	12	68	172
Nahanni Butte	18	136	3	18	50
Pine Point	369	2,379	40	250	1,009
Rae Edzo	612	3,737	44	246	728
Reliance	1	23	—	—	2
Rocher River	2	15	—	—	29
Snowdrift	83	588	8	71	970
Tungsten	30	192	1	4	110
Trout Lake	23	300	1	7	26
Wrigley	36	342	2	23	456
Yellowknife Indian Village	—	—	—	—	2
Kakisa Lake	3	43	—	—	16
Echo Bay (Rad.)	18	99	1	5	59
<b>Totals</b>	<b>5,175</b>	<b>32,518</b>	<b>502</b>	<b>2,723</b>	<b>31,761</b>
<b>Keewatin Region</b>					
Baker Lake	147	1,358	24	143	1,039
Coral Harbour	75	717	16	78	538
Chesterfield Inlet	46	305	6	57	388
Eskimo Point	157	1,196	27	145	1,355
Rankin Inlet	280	2,076	31	249	1,479
Repulse Bay	86	658	9	47	350
Whale Cove	44	255	4	41	211
<b>Totals</b>	<b>835</b>	<b>6,592</b>	<b>117</b>	<b>760</b>	<b>5,360</b>
<b>Central Arctic Region</b>					
Cambridge Bay	141	975	22	126	839
Coppermine	175	1,270	20	109	989
Gjoa Haven	130	1,155	19	111	982
Holman Island	37	305	8	75	228
Pelly Bay	65	396	7	48	626
Spence Bay	148	1,009	12	51	709
Bathurst Inlet	12	133	2	18	7
<b>Totals</b>	<b>708</b>	<b>5,243</b>	<b>90</b>	<b>538</b>	<b>4,380</b>

	Inpatient Adult and Child Services* Days of Care		Newborn Services Days of Care		Outpatient # Visits
<b>Inuvik Region</b>					
Arctic Red River	16	194	1	6	124
Colville Lake	10	124	—	—	65
Fort Good Hope	82	803	17	105	767
Fort Franklin	93	528	12	98	631
Fort Liard	83	448	8	45	680
Fort McPherson	147	1,169	19	92	903
Inuvik	571	3,947	82	372	8,470
Norman Wells	73	449	7	34	566
Sachs Harbour	46	268	2	7	462
Tuktoyaktuk	170	1,138	18	75	1,397
Paulatuk	15	108	1	5	70
Fort Norman					
Aklavik	172	1,281	27	183	1,492
<b>Totals</b>	<b>1,578</b>	<b>10,457</b>	<b>194</b>	<b>1,022</b>	<b>15,627</b>
<b>Baffin Region</b>					
Alert	—	—	—	—	8
Arctic Bay	55	289	13	56	471
Broughton Island	58	545	9	44	625
Cape Dorset	94	497	6	34	1,039
Clyde River	50	317	8	43	579
Frobisher Bay	612	3,737	44	246	728
Grise Fiord	13	124	1	5	75
Hall Beach	57	473	12	41	598
Igloolik	107	745	13	59	749
Lake Harbour	68	350	7	24	590
Nanisivik	26	161	4	20	247
Padloping Lake	—	—	—	—	2
Pangnirtung	124	906	18	82	1,999
Pond Inlet	99	904	16	68	1,050
Port Burwell	1	7	—	—	2
Resolute Bay	27	226	2	31	263
Sanikiluaq	78	835	5	29	318
<b>Totals</b>	<b>1,469</b>	<b>10,116</b>	<b>158</b>	<b>782</b>	<b>9,343</b>
<b>Grand Total</b>	<b>9,765</b>	<b>64,926</b>	<b>1,061</b>	<b>5,825</b>	<b>66,471</b>

\*Services based on Separations from Hospitals.

**Table 4**  
**Comparison of Utilization of Hospital and  
Nursing Station Services by Region – 1980/81**

Regions	Population <sup>1</sup>	Days of Care Per 100 Residents		
		Adult & Child	Newborn	Outpatient
Baffin	8,342	121.26	9.37	111.99
Keewatin	4,222	156.93	18.00	126.95
Central Arctic	3,344	156.78	16.08	130.98
Inuvik	7,441	140.53	13.73	210.01
Fort Smith	22,719	143.13	11.98	139.61
<b>Total N.W.T.</b>	<b>46,069</b>	<b>140.93</b>	<b>12.64</b>	<b>144.28</b>

<sup>1</sup> Bureau of Statistics, G.N.W.T., September 31, 1981 Figures are from June 1980

**Table 5**  
**Utilization of Hospital Services Outside  
the Northwest Territories By Province – 1980/81**

Province/Territory	Inpatient (Adult and Child) and Newborn Services			Outpatient Services	
	Separations	days	% of Days	Visits	% of Visits
Yukon	23	79	.3	3,301	2.7
British Columbia	133	882	3.0	13,036	10.6
Alberta	1,260	14,112	48.4	62,264	50.8
Saskatchewan	67	448	1.5	4,914	4.0
Manitoba	868	7,183	24.7	18,496	15.1
Ontario	184	1,634	5.6	9,600	7.8
Quebec	329	4,575	15.7	5,749	4.7
New Brunswick	10	93	.3	532	.4
Nova Scotia	8	39	.1	1,984	1.6
Prince Edward Island	1	1	.003	347	.3
Newfoundland	6	43	.2	973	.8
USA and Foreign	17	44	.2	1,452	1.2
<b>Total</b>	<b>2,906</b>	<b>29,133</b>	<b>100.0</b>	<b>122,648</b>	<b>100.0</b>



**Table 6**  
**Payments Made to Hospitals**  
**During 1979/80 and 1980/81**

<b>T.H.I.S.</b>	<b>1979/80</b>		<b>1980/81</b>	
<b>N.W.T. Hospitals:</b>	<b>\$</b>	<b>%</b>	<b>\$</b>	<b>%</b>
Contract Hospitals	23,245	.1	—	—
Federal Hospitals	3,691,937	21.3	3,649,000	20.0
Budget Review Hospitals	8,030,684	46.2	9,258,000	50.7
<b>Sub total N.W.T. Hospitals</b>	<b>11,745,865</b>	<b>67.7</b>	<b>12,907,000</b>	<b>70.7</b>
<b>Out of Territories Hospitals:</b>				
Yukon	17,244	.1	18,172	.1
B.C.	161,510	.9	166,429	.9
Alberta	2,530,388	14.6	2,237,283	12.3
Saskatchewan	31,250	.2	55,455	.3
Manitoba	1,358,716	7.8	1,432,820	7.9
Ontario	341,584	2.0	263,906	1.4
Quebec	1,114,181	6.4	1,141,090	6.2
Maritimes	42,040	.2	25,913	.1
Foreign	10,436	.1	10,932	.1
<b>Sub Total Out of Territories</b>	<b>5,607,350</b>	<b>32.3</b>	<b>5,352,000</b>	<b>29.3</b>
<b>Total Payments</b>	<b>17,353,215</b>	<b>100.0</b>	<b>18,259,000</b>	<b>100.0</b>

**Table 7**  
**Utilization of Inpatient (Adult and Child)**  
**Services by Region - 1980/81**

	Fort Smith		Keewatin		Central Arctic		Inuvik		Baffin		Total N.W.T.
	Number	% Total Service	Number	% Total Service	Number	% Total Service	Number	% Total Service	Number	% Total Service	
Services	5,175	53%	835	9%	708	7%	1,578	16%	1,469	15%	9,765
Days of Care	32,518	50%	6,592	10%	5,243	8%	10,457	16%	10,116	16%	64,926
Average Length of Stay	6.3 days		7.9 days		7.4 days		6.6 days		6.9 days		6.7 days

**Table 8**  
**Utilization of Newborn Services**  
**by Region - 1980/81**

	Fort Smith		Keewatin		Central Arctic		Inuvik		Baffin		Total N.W.T.
	Number	% total	Number	% total	Number	% total	Number	% total	Number	% total	
Services	502	47%	117	11%	90	9%	194	18%	158	15%	1,061
Days of Care	2,723	47%	760	13%	538	9%	1,022	18%	782	13%	5,825
Average Length of Stay	5.4 days		6.5 days		6.0 days		5.3 days		4.9 days		5.5 days



**Table 9**  
**Utilization of Outpatient Services**  
**By Region - 1980/81**

<b>Fort Smith</b>		<b>Keewatin</b>		<b>Central Arctic</b>		<b>Inuvik</b>		<b>Baffin</b>		<b>Total N.W.T.</b>
<b>Visits</b>	<b>% Total Visits</b>	<b>Visits</b>	<b>% Total Visits</b>	<b>Visits</b>	<b>% Total Visits</b>	<b>Visits</b>	<b>% Total Visits</b>	<b>Visits</b>	<b>% Total Visits</b>	
31,761	48%	5,360	8%	4,380	7%	15,627	23%	9,343	14%	66,471

