

**LEGISLATIVE ASSEMBLY OF THE  
NORTHWEST TERRITORIES  
10<sup>TH</sup> ASSEMBLY, 2nd SESSION**

**TABLED DOCUMENT NO. 10-84(2)**

**TABLED ON MAY 14, 1984**



**Territorial  
Hospital  
Insurance  
Services  
and Medicare**

**ANNUAL  
REPORT**

**for the  
period ending  
March 31, 1983**

Tabled Document No. 10-84(2)

Tabled May 14, 1984



Northwest  
Territories Health

Territorial Hospital Insurance Services and Medicare  
Annual Report for the period ending March 31, 1983

1

## Contents

Introduction .....	4
Letters of Transmittal .....	5
Organization Chart .....	6
Territorial Hospital Insurance Services .....	7
T.H.I.S. Claims Processing System .....	10
T.H.I.S. Reciprocal Billing Processing System .....	11
T.H.I.S./Medicare Financial Information .....	12
Notes on Statistical Tables .....	12
Table 1: Rated Bed Capacity of Health Facilities in the Northwest Territories — 1982-83 .....	14
Table 2: Utilization of Northwest Territories Hospitals and Nursing Stations — 1982-83 .....	15
Table 3: Utilization of Hospital Services Outside the Northwest Territories by Province — 1982-83 .....	16
Table 4: Cost by Major Hospitals for Hospital Services Outside the Northwest Territories — 1982/83 .....	17
Table 5: Utilization of Health Services Inside and Outside the Northwest Territories by Community — 1982-83 .....	18
Table 6: Utilization of Physician Services by Type of Service — 1982-83 .....	20
Table 7: Patient days by age inside and outside N.W.T. by facility — 1982-83 .....	21
Table 8: Utilization of Extended/Chronic Care Services In and Outside the Northwest Territories — 1982-83 .....	22



Y.K. Hospital — emergency March, 1983.

### **Introduction**

The Northwest Territories Hospital and Medical Care Insurance Plans provide coverage, with no premiums payable, for a comprehensive range of health care services for residents of the Territories.

The Government of the Northwest Territories administers and operates the Hospital Insurance and Medical Care Plans in accordance with the provisions of the Territorial Hospital Insurance Services (T.H.I.S.) and Medical Care Ordinances, respectively. The Hospital Insurance Plan is administered by the Department of Health under the direction of the T.H.I.S. Board. The Medical Care Plan (Medicare) is administered directly by the Department of Health.

This annual report for T.H.I.S. and Medicare describes the programs and provides statistics and financial statements for the year ended March 31, 1983.

1 April, 1984

Commissioner

I have the honour to present the Annual Report for T.H.I.S. and Medicare for the period ending 31 March, 1983.



Bruce McLaughlin  
Minister of Health

1 April, 1984

Minister of Health

Under the Territorial Hospital Insurance Services Ordinance, and the Medical Care Ordinance, there is a requirement to submit an Annual Report.

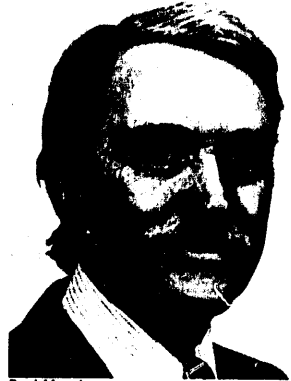
I am pleased to submit the Annual Report for T.H.I.S. and Medicare for the period ending 31 March, 1983.



Paul Moody  
Deputy Minister  
Department of Health



Bruce McLaughlin.



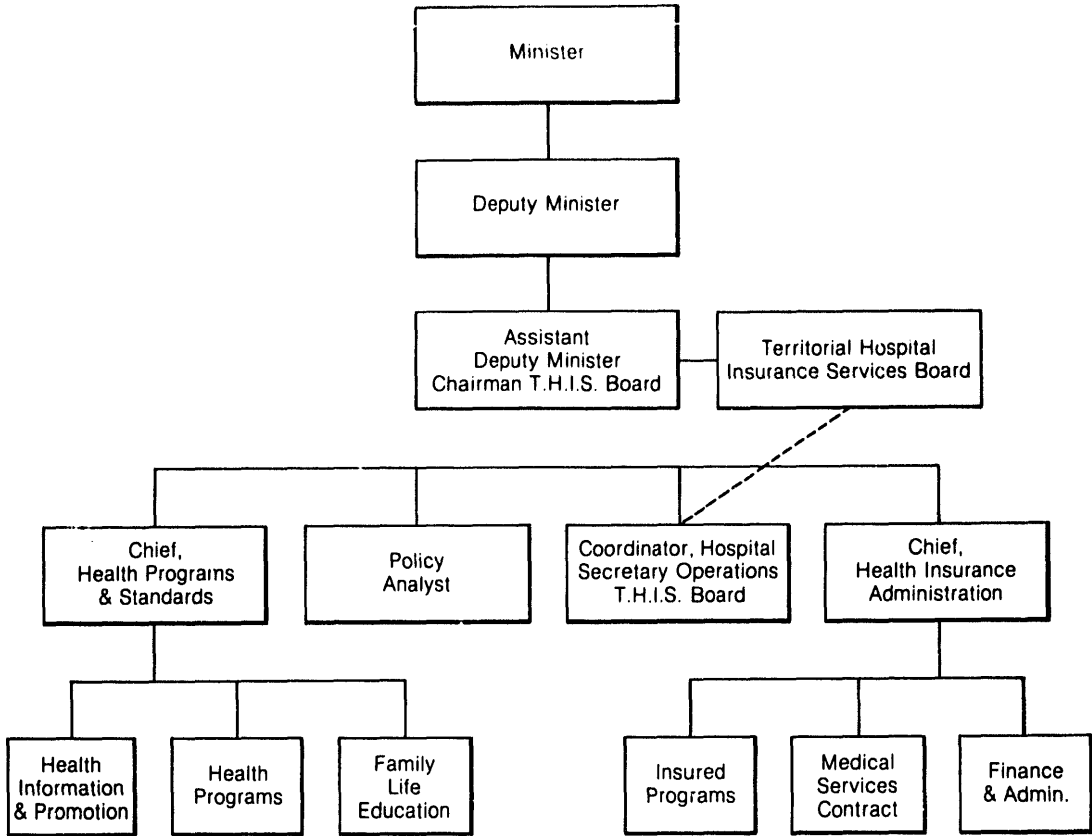
Paul Moody.



Michael Pontus.



**Department of Health and T.H.I.S.  
 Organization Chart  
 As of March 31, 1983**



**Territorial Hospital Insurance Services:  
Board Members as of March 31, 1983**

Bertha Allen - Inuvik  
Peter Anderson - Rae-Edzo  
Dave Emery - Yellowknife  
Leon Peterson - Fort Smith  
Michael S. Pontus - Yellowknife (Chairman)  
Ray J. Racette - Yellowknife (Secretary)

The N.W.T. Hospital Insurance Plan is administered under the direction of the Territorial Hospital Insurance Services (T.H.I.S.) Board, a body corporate whose members are appointed by the Commissioner in Council. The Department of Health provides support services to the Board on matters falling under its jurisdiction.

**Major Responsibilities of the T.H.I.S. Board are:**

1. to develop and administer the Hospital Insurance Plan;
2. to determine eligibility for, and entitlement to, insured inpatient and out-patient hospital services;
3. to determine the amounts that may be paid to hospitals and related health facilities both in and outside the Territories in respect of the cost of insured services provided by those facilities to eligible residents of the N.W.T.;
4. to enter into agreements on behalf of the Territories with hospitals and related health facilities in or outside the Territories, or with the Government of Canada or any province or an appropriate agency thereof, for the provision of insured services to eligible residents of the N.W.T.;
5. to ensure that adequate standards are maintained in hospitals and related health facilities; and
6. to develop and maintain a coordinated system of hospitals and health related facilities throughout the Territories.

The T.H.I.S. Board met seven times during 1982/83. Important decisions the Board made during the year included: review of the functional/architectural program for the new Yellowknife Health Centre; approval and funding of the Yellowknife detoxification program; the review and approval of the 1982/83 operating and capital budgets for the Budget Review Hospitals; initiating of a review of the Territorial Hospital Insurance Services Ordinance; review and approval of the 1982/83 Baffin Regional Hospital operating budget and staffing reviews carried out at each Budget Review Hospital by departmental staff.

**Accreditation**

Accreditation is a review and examination of a hospital's policies, practices and standards as compared to the established standards for hospitals in Canada. To undergo the accreditation review is a voluntary decision taken by hospitals wishing to indicate their compliance with the established standards of hospital care.

Fort Smith Health Centre; H. H. Williams Memorial Hospital; Stanton Yellowknife Hospital; Baffin Regional Hospital and Inuvik General Hospital have all been awarded accreditation by the Canadian Council on Hospital Accreditation.



*Y.K. Hospital patients lounge.*



Y.K. Emergency, Dr. Mike Igoe.

## **Benefits Under The Hospital Insurance Plan**

### **Eligibility**

All persons registered under the N.W.T. Health Care Plan are eligible for benefits under both the Hospital Insurance Plan and Medicare. For newcomers from a province or the Yukon Territory who are establishing permanent residence in the N.W.T., there is a three month waiting period for benefits; however, during this three month period, they are covered under their former provincial or territorial plans.

Exceptions to the three month waiting period are:

1. discharged Federal inmates who are granted first day coverage.
2. members of the National Defense or the R.C.M.P. leaving the forces who are granted first day coverage.
3. landed immigrants who are granted first day coverage.
4. DEW line employees who are eligible after one year.

### **Coverage of Insured Services**

Coverage for eligible persons, under the Hospital Insurance Plan is extended throughout the world. In other parts of Canada, the Plans pay for insured services at the rates established in the province in which they are provided. For approved services received outside Canada, eligible persons will be reimbursed up to the rates set for the N.W.T. When the amount billed exceeds the N.W.T. rate, payment of the difference becomes the patient's responsibility.

### **Synopsis of Benefits Covered Under The Hospital Insurance Plan**

#### **Inpatient Insured Services**

1. accommodation and meals at the standard or public ward level.
2. necessary nursing services.
3. laboratory, radiological, and other procedures together with the necessary interpretations for the purpose of assisting in the diagnosis or treatment of any injury, illness or disability.
4. drugs, biologicals, and related preparations when administered in a hospital.
5. use of operating room, case room and anaesthetic facilities including necessary equipment and supplies.
6. radiotherapy treatment, occupational therapy, physiotherapy and speech therapy in an approved hospital.
7. other health care support services provided in the hospital by employees.

#### **Outpatient Insured Services**

1. laboratory tests and x-rays and necessary interpretations when requested by a physician and when performed in an outpatient facility in an approved hospital.
2. hospital services in connection with most minor medical and surgical procedures.
3. emergency services when provided in the outpatient facility of an approved hospital for the purpose of diagnosis or treatment of an injury, illness or disability.
4. physiotherapy, occupational therapy, radiotherapy, and speech therapy services in an approved hospital.
5. psychological services for medical reasons when requested by a physician and provided through an approved hospital program.

A complete list of insured benefits is set out in the Territorial Hospital Insurance Services Regulations.

### **The Medical Care Plan**

Medicare was introduced in the N.W.T. in 1971 to complement the coverage of the Territorial Hospital Insurance Plan. The Plan provides insurance coverage for all medically required services rendered by physicians and specified surgical-dental procedures when medically required to be performed in a hospital. The coverage under Medicare satisfies the Federal Government requirements of universality, accessibility, comprehensiveness, portability, and administration on a non-profit basis by a public authority.

Federal funds are made available to the Government of the N.W.T. for the provision of insured health services under the Federal-Provincial Fiscal Arrangements and Established Programs Financing Act (E.P.F.), of 1977. The Legislative Assembly of the Government of the Northwest Territories approves the funding levels for Medicare and the Hospital Insurance Plan for each fiscal year.

The Department of Health administers Medicare according to the provisions of the Territorial Medical Care Ordinance. Activities which support the Plan include: registration of eligible persons; determination of insured services; annual negotiation of a fee schedule with the N.W.T. Medical Association; processing and payment of claims; and monitoring the incidence and prevalence of specific diseases in the N.W.T.

### **Eligibility for Insured Services**

All persons registered under the N.W.T. Health Care Plan are eligible for benefits under Medicare (please refer to the discussions of "eligibility" and "coverage of insured services" under the Hospital Insurance Plan on Page 8 as they are applicable to Medicare as well).

### **Synopsis of Benefits Covered Under Medicare**

Services covered by the Plan are set out in the N.W.T. Medical Care Regulations. These include:

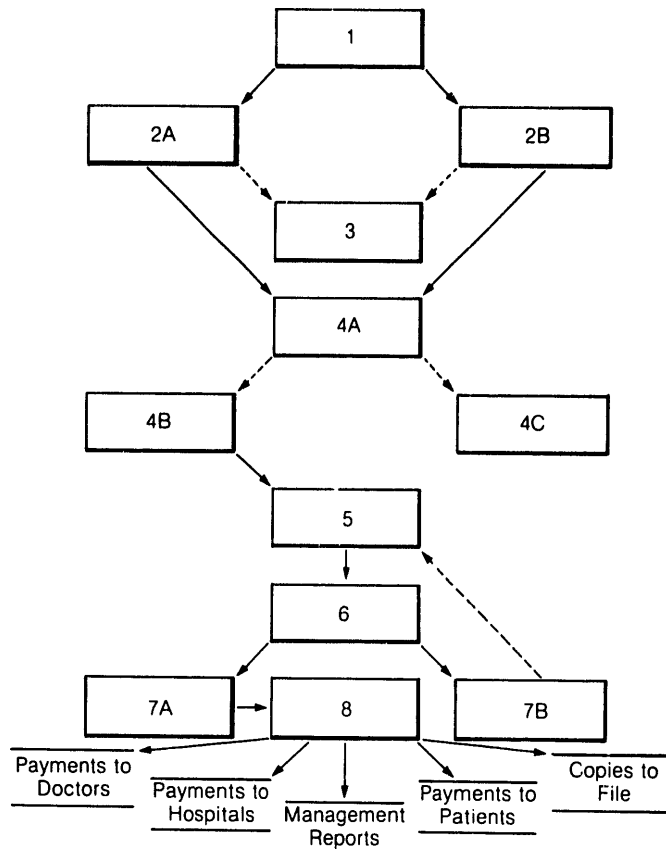
1. physician services in the office, clinic, hospital or home,
2. care and treatment before, during and after operations, including anaesthetic services and surgical assistants where necessary,
3. complete maternity care,
4. eye examinations, treatment and operations performed by a physician
5. specialist services
6. a number of surgical-dental procedures when performed by a dental surgeon in a hospital.



*Audiologist, David Barr, Yellowknife.*

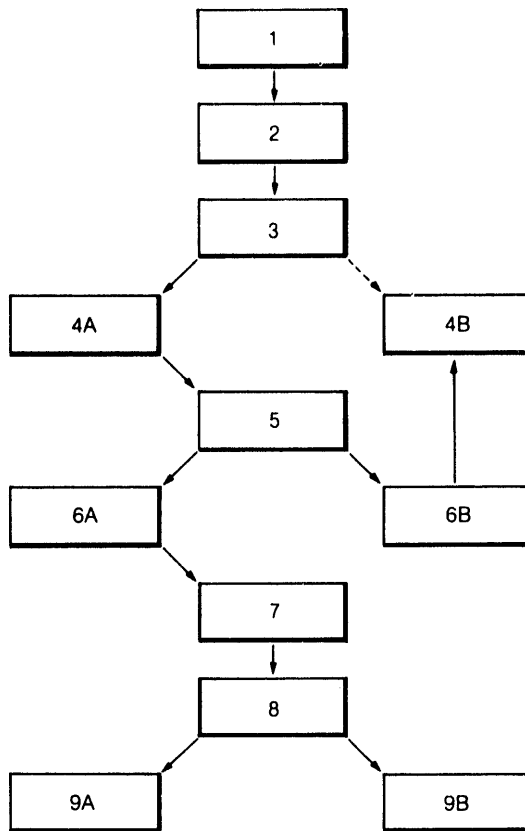
### T.H.I.S. and Medicare Processing System

1. Claims are received from physicians/hospitals/patients and are date stamped.
2. Assessment staff check N.W.T. and Alberta claims for completeness and accurate codes. Where possible, necessary changes are made.
  - 2a. Out-of-province claims for N.W.T. residents — except for Alberta claims — are coded and transcribed into N.W.T. claim cards. Any claims with out-of-Territory addresses are then sent to the Registration Section for verification of eligibility.
3. Incomplete or ineligible claims are returned to physicians/hospitals/patients for the required additional information.
- 4a. If physicians are not registered, but deemed eligible for registration, their registrations are processed.
- 4b. If physicians are not registered, but deemed eligible for registration, their registrations are processed.
- 4c. Claims submitted by physicians ineligible for registration are returned to physicians/hospitals/patients.
5. Claims are sent to data entry personnel within the Department of Health.
6. A computer edit and assessment is carried out.
- 7a. Valid claims are processed for payment.
- 7b. Rejected claims are returned to assessment staff for manual assessment and correction. Corrected claims are returned to keypunch personnel.
8. There is a bimonthly payment run.



### Reciprocal Billing

1. Invoiced claims received from N.W.T hospitals/Provincial health care plans.
2. Manual payment processed for total amount invoiced.
3. Assessment staff check for completeness & codes.
- 4a. Complete claims forwarded to keypunch personnel within the Department of Health.
- 4b. incomplete claims queried with invoicing province or referring to N.W.T. hospitals.
5. Computer edit & assessment carried out.
- 6a. Valid claims forwarded for payment.
- 6b. Rejected claims returned to assessment staff for correction and then reentered into computer system.
7. There is a bi-weekly payment run.
8. Paid claims verified against initial invoice claims.
- 9a. Cheque redeposited and reconciled against initial manual payment.
- 9b. There is a monthly invoice run for billing responsible Provincial health care plan.





Y.K. Interpreter Services.

**T.H.I.S./Medicare Financial Information  
For the Period April 1, 1982 to March 31, 1983 — Unaudited**

Expenditures	Operating 000's	Total 000's
<b>Territorial Hospital Insurance Services</b>		
Budget Review Hospitals	13,411*	
Semi-Budget Review Hospitals	5,180**	
Hospitals outside the N.W.T.	11,792	
Extended/Chronic Care	<u>1,115</u>	31,498
<b>Medicare</b>		
Doctors inside the N.W.T.	5,388	
Doctors outside the N.W.T.	<u>1,878</u>	7,268
<b>Total Expenditures</b>		<u><u>38,764</u></u>
<b>Revenue Recoveries</b>		
Recoveries — EPF (hospitals) cash only	6,597	
DIAND Grant (hospitals)	11,329	
Recoveries — EPF (medicare) cash only	2,240	
DIAND Grant (medicare)	2,101	
Reciprocal billing	318	
Extended/Chronic Care - EPF cash only	1,712	
Recoveries (H&WC — Baffin Hospital)	<u>1,001</u>	
<b>Total Revenue</b>		<u><u>25,298</u></u>

\* Includes payments for inpatient services made under reciprocal billing arrangements.

\*\* Includes payments made to Baffin Hospital, Frobisher Bay, as Budget Review type facility for period of December 4, 1982-March 31, 1983

**Notes on Statistical Tables**

The tables in this report provide 1982/83 utilization and cost data associated with the provision of insured hospital and medical care services to residents of the N.W.T.

The notes have been provided to assist with the interpretation of the tables.

**Table 1**

Table 1 indicates the rated bed capacity of health facilities in the N.W.T. with no change over 1981/82.

**Table 2**

Table 2 reflects the utilization inside the N.W.T. of inpatient, and outpatient services which are covered under the Territorial Hospital Insurance Plan. The totals do not include services which are covered by other funding agencies such as the Workers' Compensation Board, R.C.M.P. or the Armed Forces.

	<u>1981/82</u>	<u>1982/83</u>
<b>Budget Review Hospitals</b>		
% of Total A&C Inpatient Days	55.5% (25,896 days)	60.8% (30,161 days)
% of Total NB Days	49.6% (2,753 days)	60.1% (3,603 days)
% of Total Outpatient visits	26.9% (31,167 visits)	20.2% (37,970 visits)
<b>Federal Hospitals and Nursing Stations*</b>		
% of Total A&C Inpatient Days	44.5% (20,730 days)	39.2% (19,484 days)
% of Total NB Days	50.4% (2,793 days)	39.9% (2,392 days)
% of Total Outpatient Days	73.1% (84,664 visits)	79.8% (150,141 visits)

\* For ease of comparison, Frobisher Bay General Hospital is included as "Federal Hospital" for all of 1982/83

**Table 3**

Table 3 illustrates the amount of hospital services provided to N.W.T. residents outside the N.W.T.

The significant increase in the inpatient days recorded for 1982/83 outside the N.W.T. is attributable to three factors:

Firstly, the introduction of a new billing arrangement between Provinces/Territories which delayed a significant number of billings for the 1981/82 fiscal year into 1982/83, especially from Alberta and Quebec.

Secondly, the transition in 1982/83 of the G.N.W.T. to accrual accounting, which effectively added an extra period to the 1982/83 fiscal year.

Thirdly, a general population and utilization increase with an increased need to provide services.

The average per diem rates increased between 1981/82-1982/83 as they effected the G.N.W.T. costs as follows:

Inpatient: - adult & children 27% increase  
 - newborn 29% increase  
 Outpatient- cost/visit 31% increase

Alberta continues to provide approximately 50% of referred hospital services (1981/82 — 45%).

Alberta, Manitoba and Quebec combined provided 91% of all out of Territories patient days to N.W.T. residents (1981/82 — 90%).

**Table 4**

Table 4 presents the inpatient per diem cost of hospitalization charged to the N.W.T. by major hospitals outside the N.W.T.

**Table 5**

Table 5 reflects the total utilization of medical, inpatient, newborn and outpatient services in and outside the N.W.T. which are covered under the Territorial Hospital and Medical Care Insurance Plans. The totals do not include services which are covered by other funding agencies such as the Workers' Compensation Board.

A comparison of utilization with 1981/82 shows the following percentage changes in utilization in 1982/83.

Region	Medicare		Hospital Care		
	Services	Inpatient Days	Newborn Days	Outpatient Visits	Other Services
Fort Smith	21	22	5	25	94
Inuvik	16	17	3	56	5
Baffin	22	28	(12)	94	510
Keewatin	22	56	82	211	(8)
Kitikmeot	15	31	33	96	266

Part of the increase can be attributed to population growth and the transition to accrual accounting in 1982/83, the balance is attributable to increased population utilization of services.

**Table 6**

Table 6 presents the number of services provided and the amounts of payments made under Medicare by medical specialty.

**Table 7**

The utilization pattern reflects the age group distribution and high birth rate in the N.W.T.

**Table 8**

In 1982/83 the provision of the cost of Extended/Chronic Care services came under the responsibility of T.H.I.S. Table 8 indicates the days and cost by facility.



Y.K. Occupational therapy.





X-Ray Department, Hay River.

**Table 1**

**Rated Bed Capacity of Health Facilities  
in the Northwest Territories — 1982/1983**

Location	Name	Beds	Bassinets
<b>Budget Review Hospitals</b>			
Fort Smith	Fort Smith Health Centre (incl. Chronic Care 10)	25	7
Hay River	H. H. Williams Memorial (incl. Chronic Care 16)	50	10
Yellowknife	Stanton Yellowknife	72	9
	<b>Budget Review Total</b>	<u>147</u>	<u>26</u>
<b>Federal Hospitals and Nursing Stations</b>			
Frobisher Bay	Frobisher Bay General	35	9
Inuvik	Inuvik General (chronic care 10, T.B. 10)	55	10
Fort Simpson	Fort Simpson General	14	4
Rae-Edzo	Edzo Cottage Hospital	8	2
Aklavik	Aklavik N/S	5	2
Arctic Bay	Arctic Bay N/S	2	1
Baker Lake	Baker Lake N/S	3	2
Belcher Island (Sanikiluaq)	Belcher Islands N/S	3	1
Broughton Island	Broughton Island N/S	5	1
Cambridge Bay	Cambridge Bay N/S	6	2
Cape Dorset	Cape Dorset N/S	3	1
Chesterfield Inlet	Chesterfield Inlet N/S (Rehab. 1 — opened 7 July, 1977)	1	1
Clyde River	Clyde River N/S	5	1
Coppermine	Coppermine N/S	4	1
Coral Harbour	Coral Harbour N/S	2	1
Eskimo Point	Eskimo Point N/S	4	2
Fort Franklin	Fort Franklin N/S	5	2
Fort Good Hope	Fort Good Hope N/S	4	1
Fort Liard	Fort Liard N/S	2	1
Fort McPherson	Fort McPherson N/S	5	2
Fort Norman	Fort Norman N/S	4	1
Fort Providence	Fort Providence N/S	4	1
Fort Resolution	Fort Resolution N/S	4	1
Fort Wrigley	Fort Wrigley N/S	2	1
Gjoa Haven	Gjoa Haven N/S	6	2
Grise Fiord	Grise Fiord N/S	2	1
Hall Beach	Hall Beach N/S	4	1
Holman Island	Holman Island N/S	3	1
Igloodik	Igloodik N/S	7	1
Lake Harbour	Lake Harbour N/S	2	1
Nanisivik	Nanisivik N/S	6	1
Norman Wells	Norman Wells N/S	10	2
Pangnirtung	Pangnirtung N/S	7	1
Pelly Bay	Pelly Bay N/S	3	1
Pond Inlet	Pond Inlet N/S	7	1
Rankin Inlet	Rankin Inlet N/S	4	3
Repulse Bay	Repulse Bay N/S	1	1
Resolute Bay	Resolute Bay N/S	2	1
Sachs Harbour	Sachs Harbour N/S	2	—
Snowdrift	Snowdrift N/S	2	1
Spence Bay	Spence Bay N/S	4	2
Tuktoyaktuk	Tuktoyaktuk N/S	5	1
Whale Cove	Whale Cove N/S	1	1
	<b>Federal Total</b>	<u>263</u>	<u>74</u>
	<b>Total Rated Capacity at Year end</b>	<u>410</u>	<u>100</u>

**Table 2**

**Utilization of Northwest Territories  
Hospitals and Nursing Stations — 1982-83**

Facility	Inpatient (Adult & Children)		Newborn		Outpatient Visits
	Separations	Patient Days	Separations	NB Days	
<b>Budget Review Hospitals</b>					
Stanton Yellowknife	3,388	20,529	365	1,967	25,598
H. H. Williams Memorial	1,599	8,207	281	1,539	7,456
Ft. Smith	299	1,425	22	97	4,916
Sub-total Budget Review	<u>5,286</u>	<u>30,161</u>	<u>668</u>	<u>3,603</u>	<u>37,970</u>
<b>Federal Hospitals and Nursing Stations</b>					
Frobisher Bay General	1,818	7,799	237	999	6,177
Inuvik General	1,357	8,150	176	1,038	9,239
Fort Simpson General	274	1,376	33	167	6,983
Edzo Cottage Hospital	180	1,184	26	132	6,640
Aklavik N/S	8	11	—	—	2,850
Arctic Bay N/S	5	8	1	3	1,504
Baker Lake N/S	73	74	5	6	5,739
Broughton Island N/S	10	11	1	2	4,197
Cambridge Bay N/S	44	50	1	1	2,770
Cape Dorset N/S	43	51	3	6	6,667
Chesterfield Inlet N/S	21	21	—	—	1,834
Clyde River N/S	17	22	1	3	2,339
Coppermine N/S	13	15	—	—	4,875
Coral Harbour N/S	21	22	—	—	1,863
Eskimo Point N/S	43	47	5	7	5,841
Fort Providence N/S	24	27	3	8	1,967
Fort Resolution N/S	7	7	—	—	2,319
Fort Wrigley N/S	3	3	—	—	1,396
Gjoa Haven N/S	22	27	2	3	4,750
Grise Fiord N/S	—	—	—	—	1,033
Half Beach N/S (Foxe)	23	24	2	2	2,169
Holman Island N/S	1	5	—	—	1,269
Igloodik N/S	59	88	4	6	4,023
Lake Harbour N/S	6	6	—	—	3,410
Nanisivik N/S	6	9	—	—	2,274
Norman Wells N/S	8	8	—	—	3,065
Pangnirtung N/S	18	20	—	—	3,956
Pelly Bay N/S	15	18	—	—	1,697
Pond Inlet N/S	29	38	3	4	3,454
Rankin Inlet N/S	129	133	1	1	9,224
Repulse Bay N/S	15	18	—	—	2,048
Resolute Bay N/S	4	4	—	—	1,078
Sachs Harbour N/S	5	6	—	—	453
Sanikiluaq	14	20	—	—	2,094
Snowdrift N/S	8	8	—	—	3,618
Spence Bay N/S	48	61	1	2	4,407
Tuktoyaktuk N/S	21	25	—	—	2,417
Whale Cove N/S	5	5	—	—	917
Fort Liard N/S	21	27	—	—	1,530
Fort McPherson N/S	15	15	—	—	9,650
Fort Good Hope N/S	2	2	—	—	3,276
Fort Norman N/S	17	19	—	—	1,259
Fort Franklin N/S	20	20	1	2	1,870
Subtotal Federal	<u>4,472</u>	<u>19,484</u>	<u>506</u>	<u>2,392</u>	<u>150,141</u>
Total N.W.T.	<u>9,758</u>	<u>49,645</u>	<u>1,174</u>	<u>5,995</u>	<u>188,111</u>



*Health and Social Services Committee,  
Pond Inlet.*



Medical Records, Frobisher Bay.

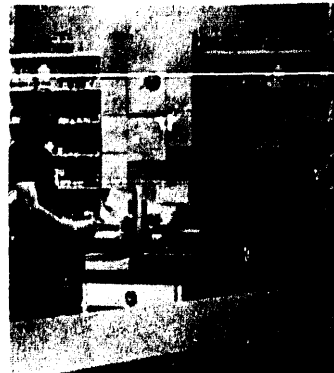
**Table 3**

**Utilization of Hospital Services  
Outside the Northwest Territories by Province — 1982/83**

Province	Inpatient A&C			Newborn			Outpatients	
	Separations	Patient Days	Cost	Separations	NB Days	Cost	Visits	Cost
Yukon	26	107	27123	2	10	250	101	3556
Alberta	1223	19450	5300422	58	466	17360	2480	94430
British Columbia	85	711	176878	14	60	2049	471	17119
Manitoba	820	9149	3013584	158	1012	5944	654	32461
New Brunswick	10	63	13746	2	8	1360	69	4022
Nova Scotia	14	58	14274	6	22	40	103	2436
Newfoundland	9	58	14138	—	—	—	25	890
Ontario	153	1953	487215	31	164	11250	501	19803
Prince Edward Island	2	8	1700	—	—	—	9	328
Quebec	295	5526	2112260	18	190	25792	357	13358
Saskatchewan	33	159	30822	3	13	260	167	6366
Outside Canada	7	222	290583	—	—	—	47	3602
<b>Total</b>	<b>2677</b>	<b>37464</b>	<b>11482745</b>	<b>292</b>	<b>1945</b>	<b>64305</b>	<b>4984</b>	<b>198371</b>

**Table 4****Cost by Major Hospital for Hospital Services  
Outside the Northwest Territories — 1982/83**

	1981/82	1982/83	% Change
<b>Alberta</b>			
Misericordia	207.00	260.00	26
Charles Camsell	190.00	250.00	32
W. W. Cross	258.00	320.00	24
Edmonton General	207.00	260.00	23
Royal Alexandra	235.00	290.00	23
University of Alberta	288.00	380.00	32
<b>Manitoba</b>			
St. Boniface General	255.60	312.25	22
Churchill Health Centre	339.65	387.00	14
Health Sciences Centre	257.50	323.65	26
Misericordia	178.70	213.00	19
<b>Ontario</b>			
Hosp. for Sick Children	329.00	455.00	38
Toronto General	281.00	365.00	30
<b>Quebec</b>			
Queen Elizabeth	240.00	268.00	12
Montreal Childrens'	412.00	516.00	25
Montreal General	288.00	366.00	27
Royal Victoria	337.00	400.00	19
Jewish General	278.00	359.00	29

*Pharmacy, Frobisher Bay.*



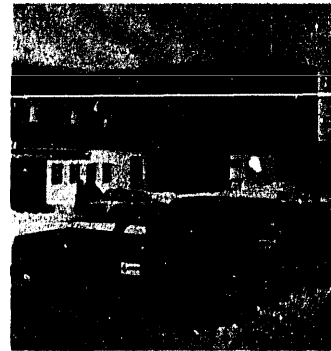
Dental Services, Frobisher Bay.

Table 5

Utilization of Hospital/Medicare Services In and Outside  
the Northwest Territories by Community — 1982/83

	Medicare		Hospital			Other Hospital Service
	General Practice	Other Medical Services	Inpatient Days	New- born Days	Out- patient Visits	
<b>Fort Smith Region</b>						
Fort Smith	11,744	7,562	4,958	362	5,208	302
Fort Resolution	1,849	908	990	43	2,511	6
Snowdrift	688	558	354	24	2,584	2
Detah	1	—	—	—	3	—
Yellowknife	48,134	53,305	14,878	1,230	27,837	2,800
Fort Rae	3,937	3,747	4,205	286	6,112	12
Pine Point	8,648	5,822	2,234	264	1,479	62
Hay River	21,235	10,169	8,167	402	5,931	58
Fort Providence	1,327	928	961	128	2,261	13
Reliance	7	17	—	—	5	—
Lac La Martre	621	547	518	93	926	3
Fort Simpson	3,202	2,627	1,998	124	3,872	9
Jean Marie River	108	59	26	—	96	—
Nahanni Butte	144	142	99	—	90	—
Fort Liard	747	675	720	37	2,076	2
Wrigley	378	447	261	55	1,627	—
Tungsten	1,097	1,173	252	34	144	2
Trout Lake	228	134	117	7	65	—
Kakisa Lake	57	70	27	—	17	—
Echo Bay (Rad.)	29	173	46	—	16	—
Bathurst Inlet	55	123	60	6	48	—
<b>Totals</b>	<b>104,236</b>	<b>89,186</b>	<b>40,871</b>	<b>3,095</b>	<b>62,908</b>	<b>3,271</b>
<b>Inuvik Region</b>						
Norman Wells	822	1,301	638	119	2,272	5
Fort Norman	659	875	987	17	1,455	—
Fort Good Hope	848	861	778	142	3,333	4
Fort Franklin	687	754	731	49	2,053	9
Colville Lake	81	43	48	—	129	—
Inuvik	12,696	9,364	6,438	596	5,820	135
Aklavik	1,658	1,586	1,837	145	3,599	5
Fort McPherson	1,484	1,460	1,644	99	9,248	9
Arctic Red River	343	275	190	6	457	4
Tuktoyaktuk	1,335	1,893	1,535	158	2,638	10
Sachs Harbour	339	325	307	28	634	—
Paulatuk	298	184	185	18	87	—
<b>Totals</b>	<b>21,250</b>	<b>18,921</b>	<b>15,327</b>	<b>1,377</b>	<b>31,725</b>	<b>181</b>

	Medicare		Hospital			
	General Practice	Other Medical Services	Inpatient Days	New-born Days	Out-patient Visits	Other Hospital Services
<b>Baffin Region</b>						
Igloolik	1,150	1,370	1,136	171	3,634	19
Hall Beach	675	498	522	37	2,272	4
Alert	68	100	30	—	24	3
Pond Inlet	953	1,207	1,244	207	3,859	19
Clyde River	538	457	715	76	2,961	13
Arctic Bay	654	477	524	52	2,005	3
Resolute Bay	517	473	346	24	1,300	1
Grise Fiord	92	131	137	12	1,113	—
Nanisivik	442	623	193	26	2,117	2
Frobisher Bay	14,730	9,372	5,615	310	5,775	280
Lake Harbour	543	553	444	50	3,399	12
Resolution Bay	1	1	—	—	—	—
Cape Dorset	1,444	1,555	1,451	102	6,096	23
Pangnirtung	1,614	1,439	1,171	101	4,269	89
Broughton Island	723	722	759	53	5,033	12
Cape Dyer	3	10	5	—	3	—
Port Burwell	4	—	—	—	—	—
Sanikiluaq	126	196	772	48	2,372	—
<b>Totals</b>	<b>24,277</b>	<b>19,184</b>	<b>15,064</b>	<b>1,269</b>	<b>46,232</b>	<b>480</b>
<b>Keewatlin Region</b>						
Rankin Inlet	1,881	2,227	1,937	196	8,745	38
Eskimo Point	1,609	1,759	1,729	203	5,686	34
Chesterfield Inlet	645	573	624	60	2,332	3
Baker Lake	3,003	2,200	3,079	220	6,494	30
Coral Harbour	865	1,057	1,017	60	2,186	8
Repulse Bay	812	901	956	174	2,157	14
Whale Cove	319	386	344	87	1,026	1
<b>Totals</b>	<b>9,134</b>	<b>9,103</b>	<b>9,686</b>	<b>1,000</b>	<b>28,626</b>	<b>128</b>
<b>Kitikmeot Region</b>						
Holman Island	583	638	378	66	1,358	6
Cambridge Bay	3,027	2,684	2,163	162	2,888	25
Coppermine	1,136	2,192	1,434	150	4,688	17
Gjoa Haven	1,075	1,225	1,069	144	4,897	17
Spence Bay	796	1,210	836	112	4,041	6
Pelly Bay	666	885	636	50	1,760	2
<b>Totals</b>	<b>7,283</b>	<b>8,834</b>	<b>6,516</b>	<b>684</b>	<b>19,632</b>	<b>73</b>
<b>Grand Totals</b>	<b>166,180</b>	<b>145,228</b>	<b>87,464</b>	<b>7,425</b>	<b>189,123</b>	<b>4,133</b>



Baffin Regional Hospital, Frobisher Bay.



Paediatrician, Frohlicher Bay.

**Table 6**  
**Utilization of Physician Services**  
**by Type of Service — 1981/82-1982/83**

Fee Code	Name	1981/82				1982/83 <sup>1</sup>				1981/82-1982/83			
		Services	% of Tot.	Serv./ Pop.	Cost	Services	% of Tot.	Serv./ Pop.	Cost	Services	% Ch.	Cost Change	% Change of Cost
A	General Practice	140,130	55	3.06	2,404,054	166,172	53	3.46	3,286,547	26,042	19	882,493	37
B	General Procedures	7,167	3	.17	116,898	14,415	5	.30	182,327	6,798	89	65,429	56
C	—	—	—	—	—	—	—	—	—	—	—	—	—
D	Anaesthesia	1,603	1	.04	34,280	2,222	1	.05	54,519	619	39	20,239	59
E	Laboratory	26,976	10	.59	155,726	31,191	10	.65	212,195	4,215	16	56,469	36
F	Lab & Pathology	1	—	—	35	2	—	—	67	1	100	32	91
G	Obstetrics	13,232	5	.29	462,991	16,926	.05	.35	672,383	3,694	28	209,392	45
H	Gynecology	4,858	2	.11	204,639	5,528	2	.12	266,120	670	14	61,481	30
I	—	—	—	—	—	—	—	—	—	—	—	—	—
J	Cardio-Vas. Surg.	716	1	.02	35,472	1,067	1	.02	69,820	351	49	34,348	97
K	General Surgery	6,481	3.5	.14	323,688	8,884	2.9	.19	471,372	2,403	37	147,684	46
L	Orthopaedics	5,177	2.0	.11	254,576	6,374	2.0	.13	323,761	1,197	23	69,185	27
M	Neurosurgery	451	1	.01	25,578	515	1	.01	37,671	64	14	12,093	47
N	Urology	1,269	1	.03	56,685	1,842	1	.04	92,231	573	45	35,546	63
O	Otolaryngology	5,858	2.3	.13	237,179	5,579	1.8	.12	253,846	(279)	(.05)	16,667	7
P	Ophthalmology	11,596	4.5	.25	173,539	13,702	4.4	.29	247,661	2,106	18	74,122	43
Q	Plastic Surgery	1,042	1	.02	51,859	1,771	1	.04	110,183	729	70	58,324	112
R	Internal Med.	7,959	3	.17	187,097	10,335	3	.22	282,425	2,376	30	95,328	51
S	Psychiatry	1,716	1	.04	87,846	1,949	1	.04	101,002	233	14	13,156	15
T	Paediatrics	4,328	2	.09	108,675	10,105	3	.21	276,026	5,777	133	167,351	154
U	Dermatology	4,252	1.6	.09	10,580	768	1	.02	12,477	(3,484)	(82)	1,897	18
V	Phy Med & Rehab	241	1	—	4,391	365	1	—	7,959	124	51	3,568	81
W	X-Ray	6,635	2.6	.15	105,292	8,818	2.8	.18	158,170	2,183	33	52,878	50
X	X-Ray	1,728	1	.04	65,753	2,467	1	.05	116,876	739	43	51,123	78
Z	Neurology	244	1	—	7,724	412	1	—	15,392	168	69	7,668	99
	<b>Total</b>	<b>254,090</b>	<b>100</b>	<b>5.55</b>	<b>5,114,557</b>	<b>311,408</b>	<b>100</b>	<b>6.49</b>	<b>7,251,030</b>	<b>57,318</b>	<b>23</b>	<b>2,136,473</b>	<b>42</b>

<sup>1</sup> GNWT moved to the accrual accounting basis thereby extending the 1982/83 year resulting in 15 months vs 12 months for 81/82. The accrual difference is 17,800 services — \$455,188. cost.

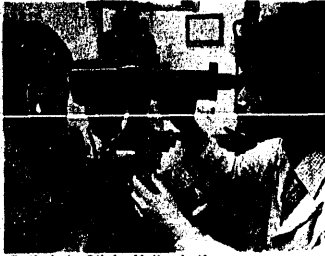
**Table 7****Utilization of Patient Days In and Outside  
The Northwest Territories by Age 1982/83**

Facility	Under 1	1-4	5-14	15-24	25-44	45-64	65-74	75 +	Total
Fort Smith Health Centre	272	65	78	312	178	283	121	218	1,527
H. H. Williams Hospital	1,013	329	333	1,357	2,026	1,449	736	1,711	8,954
Stanton Hospital	4,776	1,809	1,301	3,555	4,639	2,256	1,025	1,617	20,978
Baffin Regional Hospital	1,934	926	616	1,779	2,055	904	456	180	8,850
Inuvik Hospital	1,470	396	448	1,611	2,196	1,276	5,681	1,223	9,188
Fort Simpson Hospital	217	68	72	206	586	137	218	39	1,543
Rae/Edzo Hospital	589	229	48	74	107	56	28	185	1,316
Yellowknife Detox Centre	—	—	—	499	1,277	300	18	158	2,252
Nursing Stations	178	99	85	272	192	103	38	64	1,031
Outside the N.W.T.	5,865	2,780	2,658	6,657	8,880	8,726	2,193	1,651	39,410
<b>Total Patient Days</b>	<b><u>16,314</u></b>	<b><u>6,701</u></b>	<b><u>5,639</u></b>	<b><u>16,322</u></b>	<b><u>22,136</u></b>	<b><u>15,490</u></b>	<b><u>5,401</u></b>	<b><u>7,046</u></b>	<b><u>95,049</u></b>



Pediatrics, Yellowknife.





Ophthalmic Clinic, Yellowknife.

Table 8

Utilization of Extended/Chronic Care  
Services In and Outside the Northwest Territories — 1982/83

<u>In N.W.T.</u>	<u>Patient Days</u>	<u>Cost</u>
Stanton Yellowknife Hospital	1,637	122,775
H. H. Williams Hospital	5,135	385,125
Fort Smith Health Centre	4,051	303,825
Inuvik General Hospital	2,627	197,025
Fort Simpson Hospital	730	54,750
Sub Total	<u>14,180</u>	<u>1,083,500</u>
<u>Outside N.W.T.</u>		
St. Amant Centre	610	51,966
Total	<u>14,790</u>	<u>1,115,446</u>





