

LEGISLATIVE ASSEMBLY OF THE  
NORTHWEST TERRITORIES  
10<sup>TH</sup> ASSEMBLY, 4<sup>TH</sup> SESSION

TABLED DOCUMENT NO. 66-85(1)

TABLED ON MARCH 25, 1985

Tabled Document No. 66-85(1)  
Tabled *March 25/85*

**Territorial  
Hospital  
Insurance  
Services  
and Medicare**

**ANNUAL  
REPORT**

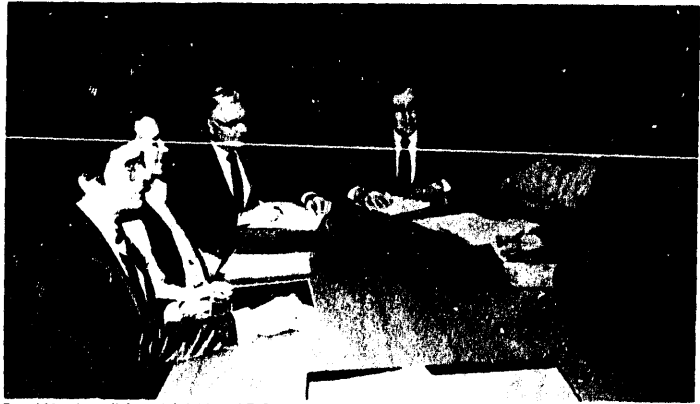
for the  
period ending  
March 31, 1984



Territorial Hospital Insurance Services and Medicare  
Annual Report for the period ending March 31, 1983

## Contents

Introduction .....	4
Letters of Transmittal .....	5
Organization Chart .....	6
Territorial Hospital Insurance Services	
– Major Responsibilities of the Board .....	7
– Accreditation .....	7
– Benefits under T.H.I.S. Plan .....	8
– The Medical Care Plan .....	9
– Eligibility for Insured Services .....	9
– Synopsis of Benefits Covered under Medical Plan .....	9
– N.W.T. Hospitals and Detox Centre .....	10
Table 1: Rated Bed Capacity of Health Facilities in the Northwest Territories – 1983-84 .....	13
Table 2: Utilization of Northwest Territories Hospitals and Nursing Stations – 1983-84 .....	14
Table 3: Utilization of Hospital Services Outside the Northwest Territories by Province – 1983-84 .....	15
Table 4: Cost by Major Hospitals for Hospital Services Outside the Northwest Territories – 1983-84 .....	16
Table 5: Utilization of Health Services Inside and Outside the Northwest Territories by Community – 1983-84 .....	17
Table 6: Utilization of Physician Services by Type of Service – 1983-84 .....	20
Table 7: Patient days by age inside and outside N.W.T. by facility – 1983-84 .....	21
Table 8: Utilization of Extended/Chronic Care Services In and Outside the Northwest Territories – 1983-84 .....	22
Table 9: Utilization of Medicare Services by N.W.T. Regions .....	22
Table 10: Ranking Order Six Most Common Diseases for N.W.T. Regions Based on Use of Physician Services .....	23
Table 11: Utilization of Services in N.W.T. Regions Showing Common Diseases in Incidence Ranking Order .....	24



*Board Members: (left to right) Edward E. Timoffee (Secretary), Leon Peterson, Dave Emery, Micheef S. Pontus (Chairman), Edna Elias and Bertha Allen.*

### **Introduction**

The Northwest Territories Hospital and Medical Care Insurance Plans provide coverage, with no premiums payable, for a comprehensive range of health care services for residents of the Territories.

The Government of the Northwest Territories administers and operates the Hospital Insurance and Medical Care Plans in accordance with the provisions of the Territorial Hospital Insurance Services (T.H.I.S.) and Medical Care Ordinances, respectively. The Hospital Insurance Plan is administered by the Department of Health under the direction of the T.H.I.S. Board. The Medical Care Plan (Medicare) is administered directly by the Department of Health.

This annual report for T.H.I.S. and Medicare describes the programs and provides statistics and financial statements for the year ended March 31, 1984.

November, 1984

Commissioner

I have the honour to present the Annual Report for T.H.I.S. and Medicare for the period ending 31 March, 1984.



Bruce McLaughlin  
Minister of Health



Bruce McLaughlin.

November, 1984

Minister of Health

Under the Territorial Hospital Insurance Services Ordinance, and the Medical Care Ordinance, there is a requirement to submit an Annual Report.

I am pleased to submit the Annual Report for T.H.I.S. and Medicare for the period ending 31 March, 1984.



Paul Moody  
Deputy Minister,  
Department of Health



Paul Moody.

November, 1984

Deputy Minister

As Chairman of the Board of Trustees, Northwest Territories Hospital Insurance Services, I have reviewed the Annual Report, and it is my pleasure to present it to you.

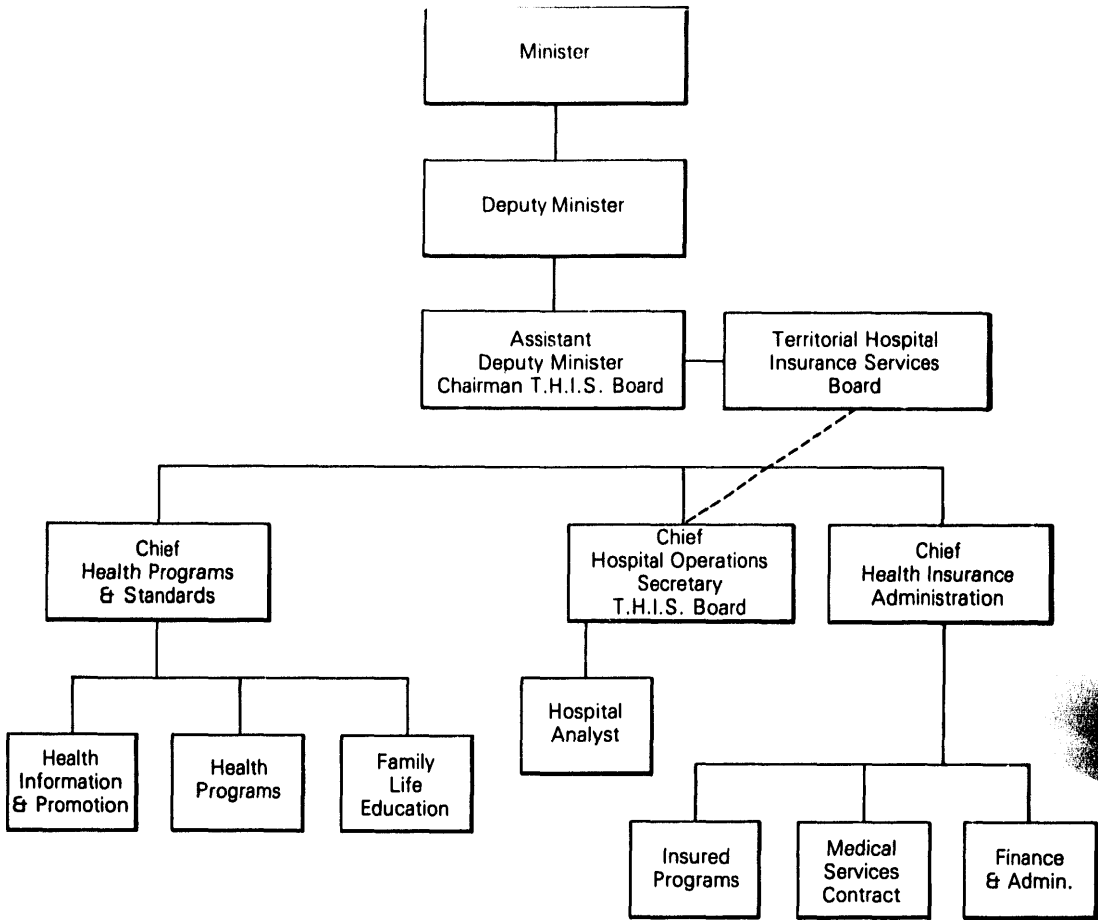


Michael Pontus  
Chairman, T.H.I.S. and  
Assistant Deputy Minister  
Department of Health



Michael Pontus.

Department of Health and T.H.I.S.  
Organization Chart  
(March 1, 1984)



**Territorial Hospital Insurance Services:  
Board Members as of March 31, 1984**

Bertha Allen	- Inuvik
Edna Elias	- Coppermine
Dave Emery	- Yellowknife
Meeka Kilabuk	- Pangnirtung
Leon Peterson	- Fort Smith
Michael S. Pontus	- Yellowknife (Chairman)
Edward E. Timoltee	- Yellowknife (Secretary)

The N.W.T. Hospital Insurance Plan is administered under the direction of the Territorial Hospital Insurance Services (T.H.I.S.) Board, a body corporate whose members are appointed by the Commissioner in Council. The Department of Health provides support services to the Board on matters falling under its jurisdiction.

**Major Responsibilities of the T.H.I.S. Board are:**

1. to develop and administer the Hospital Insurance Plan;
2. to determine eligibility for, and entitlement to, insured inpatient and out-patient hospital services;
3. to determine the amounts that may be paid to hospitals and related health facilities both in and outside the Territories in respect of the cost of insured services provided by those facilities to eligible residents of the N.W.T.;
4. to enter into agreements on behalf of the Territories with hospitals and related health facilities in or outside the Territories, or with the Government of Canada or any province or an appropriate agency thereof, for the provision of insured services to eligible residents of the N.W.T.;
5. to ensure that adequate standards are maintained in hospitals and related health facilities; and
6. to develop and maintain a co-ordinated system of hospitals and health related facilities throughout the Territories.

The T.H.I.S. Board met six times during 1983/84. Important decisions the Board made during the year included: review of the functional/architectural program for the new Yellowknife Health Centre; approval and funding of the Yellowknife detoxification program; the review and approval of the 1983/84 operating and capital budgets for the Budget Review Hospitals; initiating of a review of the Territorial Hospital Insurance Services Ordinance; review and approval of the 1983/84 Baffin Regional Hospital operating budget and staffing reviews carried out at each Budget Review Hospital by departmental staff.

**Accreditation**

Accreditation is a review and examination of a hospital's policies, practices and standards as compared to the established standards for hospitals in Canada. To undergo the accreditation review is a voluntary decision taken by hospitals wishing to indicate their compliance with the established standards of hospital care.

Fort Smith Health Centre; H.H. Williams Memorial Hospital; Stanton Yellowknife Hospital; Baffin Regional Hospital and Inuvik General Hospital have all been awarded accreditation by the Canadian Council on Hospital Accreditation.



*isolation identification of micro organisms.*



## **Benefits Under The Hospital Insurance Plan**

### **Eligibility**

All persons registered under the N.W.T. Health Care Plan are eligible for benefits under both the Hospital Insurance Plan and Medicare. For newcomers from a province or the Yukon Territory who are establishing permanent residence in the N.W.T., there is a three month waiting period for benefits; however, during this three month period, they are covered under their former provincial or territorial plans.

Exceptions to the three month waiting period are:

1. discharged Federal inmates who are granted first day coverage.
2. members of the National Defense or the R.C.M.P. leaving the forces who are granted first day coverage.
3. landed immigrants who are granted first day coverage.
4. DEW line employees who are eligible after one year.

### **Coverage of Insured Services**

Coverage for eligible persons, under the Hospital Insurance Plan is extended throughout the world. In other parts of Canada, the Plans pay for insured services at the rates established in the province in which they are provided. For approved services received outside Canada, eligible persons will be reimbursed up to the rates set for the N.W.T. When the amount billed exceeds the N.W.T. rate, payment of the difference becomes the patient's responsibility.

## **Synopsis of Benefits Covered Under the Hospital Insurance Plan**

### **Inpatient Insured Services**

1. accommodation and meals at the standard or public ward level.
2. necessary nursing services.
3. laboratory, radiological, and other procedures together with the necessary interpretations for the purpose of assisting in the diagnosis or treatment of any injury, illness or disability.
4. drugs, biologicals, and related preparations when administered in a hospital.
5. use of operating room, case room and anaesthetic facilities including necessary equipment and supplies.
6. radiotherapy treatment, occupational therapy, physiotherapy and speech therapy in an approved hospital.
7. other health care support services provided in the hospital by employees.

### **Outpatient Insured Services**

1. laboratory tests and x-rays and necessary interpretations when requested by a physician and when performed in an outpatient facility in an approved hospital.
2. hospital services in connection with most minor medical and surgical procedures.
3. emergency services when provided in the outpatient facility of an approved hospital for the purpose of diagnosis or treatment of an injury, illness or disability.
4. physiotherapy, occupational therapy, radiotherapy, and speech therapy services in an approved hospital.
5. psychological services for medical reasons when requested by a physician and provided through an approved hospital program.

A complete list of insured benefits is set out in the Territorial Hospital Insurance Services Regulations.

### The Medical Care Plan

Medicare was introduced in the N.W.T. in 1971 to compliment the coverage of the Territorial Hospital Insurance Plan. The Plan provides insurance coverage for all medically required services rendered by physicians and specified surgical-dental procedures when medically required to be performed in a hospital. The coverage under Medicare satisfies the Federal Government requirements of universality, accessibility, comprehensiveness, portability, and administration on a non-profit basis by a public authority.

Federal funds are made available to the Government of the N.W.T. for the provision of insured health services under the Federal-Provincial Fiscal Arrangements and Established Programs Financing Act (E.P.F.), of 1977. The Legislative Assembly of the Government of the Northwest Territories approves the funding levels for Medicare and the Hospital Insurance Plan for each fiscal year.

The Department of Health administers Medicare according to the provisions of the Territorial Medical Care Ordinance. Activities which support the Plan include: registration of eligible persons; determination of insured services; annual negotiation of a fee schedule with the N.W.T. Medical Association; processing and payment of claims; and monitoring the incidence and prevalence of specific diseases in the N.W.T.

#### Eligibility for Insured Services

All persons registered under the N.W.T. Health Care Plan are eligible for benefits under Medicare (please refer to the discussions of "eligibility" and "coverage of insured services" under the Hospital Insurance Plan on Page 10 as they are applicable to Medicare as well).

#### Synopsis of Benefits Covered Under Medicare

Services covered by the Plan are set out in the N.W.T. Medical Care Regulations. These include:

1. physician services in the office, clinic, hospital or home,
2. care and treatment before, during and after operations, including anaesthetic services and surgical assistants where necessary.
3. complete maternity care.
4. eye examinations, treatment and operations performed by a physician.
5. specialist services.
6. a number of surgical-dental procedures when performed by a dental surgeon in a hospital.



Nursery.

### **T.H.I.S. and Medicare Processing System**

- 1.0 Claims are received from physicians/hospitals/patients and are date stamped.
- 2.0
  - 2.1 Assessment staff check N.W.T. and Alberta claims for completeness and accurate codes. Where possible, necessary changes are made.
  - 2.2 Out-of-province claims for N.W.T. residents – except for Alberta claims – are coded and transcribed into N.W.T. claim cards. Any claims with out-of-Territory addresses are then sent to the Registration Section for verification of eligibility.
- 3.0 Incomplete or ineligible claims are returned to physicians/hospitals/patients for the required additional information.
- 4.0
  - 4.1 If physicians are not registered, but deemed eligible for registration, their registrations are processed.
  - 4.2 If physicians are not registered, but deemed eligible for registration, their registrations are processed.
  - 4.3 Claims submitted by physicians ineligible for registration are returned to physicians/hospitals/patients.
- 5.0 Claims are sent to data entry personnel within the Department of Health.
- 6.0 A computer edit and assessment is carried out.
- 7.0
  - 7.1 Valid claims are processed for payment.
  - 7.2 Rejected claims are returned to assessment staff for manual assessment and correction. Corrected claims are returned to keypunch personnel.
- 8.0 There is a bi-monthly payment run.

### **N.W.T. Hospitals and Detox Centre**

#### **Fort Smith Health Center**

The Fort Smith Health Center is a modern, accredited health care facility operated through a local board of management providing in-patient care (15 beds), extended/chronic care (10 beds), out-patient and emergency services, home care, physiotherapy, public health, social services and doctors' offices for visiting specialists.

Specialists and consultant services are provided on a regular basis from the Stanton Yellowknife Hospital.

#### **H.H. Williams Memorial Hospital**

H.H. Williams Memorial Hospital is a modern accredited health center operated for the government by the Pentecostal Assemblies of Canada, (50 beds), serving residents from the southern Great Slave area, particularly the communities of Hay River, Pine Point, Fort Resolution, Enterprise and Fort Providence.

The facilities provide in-patient and emergency services, home care, public and environmental health, social services and doctors' offices for visiting specialists.

As of January, 1984, as an extension of the Hospital, H.H. Williams Memorial Hospital provides nursing and health clinic services in Pine Point.

Specialists and consultant services are available on a regular basis from Stanton Yellowknife Hospital and physician services are provided through the Hay River Medical Clinic.

#### **Stanton Yellowknife Hospital**

Stanton Yellowknife Hospital is a modern accredited 72 bed acute care hospital, operated through a board of management, providing a wide variety of in-patient services. Approximately one-half the utilization of the hospital is by residents from outside Yellowknife.

The hospital has on staff medical specialists in the areas of orthopedics, otorhinolaryngology (ENT), obstetrics/gynecology, ophthalmology, internal medicine and psychiatry. Through a contract with the federal Medical Services Branch, these specialists regularly visit major communities in the Western Arctic.

In the area of rehabilitation medicine, the hospital has organized occupational therapy, physiotherapy, audiology and speech therapy programs.

The hospital has developed a psychiatric program which services Yellowknife and major centres in the Fort Smith and Kitikmeot regions. The psychiatric team is made up of two psychiatrists, a psychiatric nurse, a clinical psychologist and a psychiatric social worker.

Planning is underway for construction of a new facility in Yellowknife. The facility will provide 115 acute care and 20 extended/chronic care beds as well as expanded diagnostic treatment services. The new facility will be approximately 13,521.9m<sup>2</sup>.

Construction drawings and tender specifications are now being prepared. Construction should start April, 1985.

#### **Baffin Regional Hospital**

The Baffin Regional Hospital is a modern accredited hospital operated through a regional board of management providing a wide variety of in-patient services. It services the health needs of all Baffin regional communities and has 35 acute care beds.

Specialists and consultant services are provided on a regular basis through a contract arrangement with McGill University of Montreal, the Clarke Institute of Toronto, and from the Stanton Yellowknife Hospital.

#### **Detoxication**

The Yellowknife Detoxication Unit, administered by the Northern Addiction Services, and funded by Territorial Hospital Insurance Services (T.H.I.S.) continued to provide a high standard of service to residents of the Western Arctic.



*Reception area — Fort Smith Health Care Centre.*

T.H.I.S./Medicare Financial Information  
 For the Period April 1, 1983 to March 31, 1984 — Unaudited

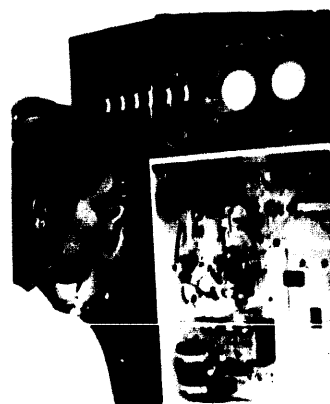
Expenditures	Operating 000's		Total 000's	
	82/83	83/84	82/83	83/84
<b>Territorial Hospital Insurance Services</b>				
Budget Review Hospitals	13,411	14,113		
Semi-Budget Review Hospitals	5,180	7,941		
Hospitals outside the N.W.T.	11,792	13,529		
Extended/Chronic Care	1,115	1,039	31,498	36,622
<b>Medicare</b>				
Doctors inside the N.W.T.	5,388	6,438		
Doctors outside the N.W.T.	1,878	1,262	7,266	7,700
<b>Total Expenditures</b>			<u><b>38,764</b></u>	<u><b>44,322</b></u>
<b>Revenue Recoveries</b>				
Recoveries — EPF (hospitals) cash only	6,597	6,172		
DIAND Grant (hospitals)	11,329	12,450		
Recoveries — EPF (medicare) cash only	2,240	2,125		
DIAND Grant (medicare)	2,101	2,186		
Reciprocal billing	318	412		
Extended/Chronic Care — EPF cash only	1,712	1,834		
Recoveries (H&WC — Baffin Hospital)	1,001	3,736		
<b>Total Revenue</b>			<u><b>25,298</b></u>	<u><b>28,915</b></u>

Table 1

**Rated Bed Capacity of Health Facilities  
in the Northwest Territories — 1983/84**

Location	Name	Beds	Bassinets
<b>Budget Review Hospitals</b>			
Fort Smith	Fort Smith Health Centre (incl. Chronic Care 10)	25	7
Hay River	H.H. Williams Memorial (incl. Chronic Care 16)	50	10
Yellowknife	Stanton Yellowknife	72	9
Frnhisher Bay	Baffin Regional Hospital	35	9
<b>Budget Review Total</b>		<b>162</b>	<b>36</b>
<b>Federal Hospitals and Nursing Stations</b>			
Inuvik	Inuvik General (chronic care 10, T.B. 10)	55	10
Fort Simpson	Fort Simpson General	14	4
Rae-Edzo	Edzo Cottage Hospital	8	2
Aklavik	Aklavik N/S	5	2
Arctic Bay	Arctic Bay N/S	2	1
Baker Lake	Baker Lake N/S	3	2
Belcher Island (Sanikiluaq)	Belcher Islands N/S	3	1
Broughton Island	Broughton Island N/S	5	1
Cambridge Bay	Cambridge Bay N/S	6	2
Cape Dorset	Cape Dorset N/S	3	1
Chesterfield Inlet	Chesterfield Inlet N/S	1	1
Clyde River	Clyde River N/S	5	1
Coppermine	Coppermine N/S	4	1
Coral Harbour	Coral Harbour N/S	2	1
Eskimo Point	Eskimo Point N/S	4	2
Fort Franklin	Fort Franklin N/S	5	2
Fort Good Hope	Fort Good Hope N/S	4	1
Fort Liard	Fort Liard N/S	2	1
Fort McPherson	Fort McPherson N/S	5	2
Fort Norman	Fort Norman N/S	4	1
Fort Providence	Fort Providence N/S	4	1
Fort Resolution	Fort Resolution N/S	4	1
Fort Wrigley	Fort Wrigley N/S	2	1
Gjoa Haven	Gjoa Haven N/S	6	2
Grise Fiord	Grise Fiord N/S	2	1
Hall Beach	Hall Beach N/S (Foxe)	4	1
Holman Island	Holman Island N/S	3	1
Igloolik	Igloolik N/S	7	1
Lake Harbour	Lake Harbour N/S	2	1
Nanisivik	Nanisivik N/S	6	1
Norman Wells	Norman Wells N/S	10	2
Pangnirtung	Pangnirtung N/S	7	1
Pelly Bay	Pelly Bay N/S	3	1
Pond Inlet	Pond Inlet N/S	7	1
Rankin Inlet	Rankin Inlet N/S	4	3
Repulse Bay	Repulse Bay N/S	1	1
Resolute Bay	Resolute Bay N/S	2	1
Sachs Harbour	Sachs Harbour N/S	2	—
Snowdrift	Snowdrift N/S	2	1
Spence Bay	Spence Bay N/S	4	2
Tuktoyaktuk	Tuktoyaktuk N/S	5	1
Whale Cove	Whale Cove N/S	1	1
<b>Federal Total</b>		<b>228</b>	<b>74</b>
<b>Total Rated Capacity at Year end</b>		<b>410</b>	<b>100</b>

Table 1 indicates the rated bed capacity of health facilities in the N.W.T. with no change over 1982/83.



KDA chemistry analyzer.

Table 2

Utilization of Northwest Territories  
Hospital and Nursing Stations - 1983/84

Facility	Inpatient (Adult & Children)		Newborn		Outpatient Visits
	Separations	Patient Days	Separations	NB Days	
<b>Budget Review Hospitals</b>					
Stanton Yellowknife	3,124	17,193	436	2,187	22,449
H.H. Williams Memorial	931	6,230	47	209	7,495
Fort Smith Health Centre	249	1,382	15	61	4,610
Baffin Regional Hospital	1,552	7,197	247	1,109	6,886
Yellowknife Detox Centre	459	1,170			
<b>Sub-total Budget Review</b>	<b>6,315</b>	<b>33,172</b>	<b>745</b>	<b>3,566</b>	<b>41,440</b>
<b>Federal Hospitals and Nursing Stations</b>					
Inuvik General	1,464	8,347	152	832	10,224
Fort Simpson General	248	1,315	27	102	3,620
Edzo Cottage Hospital	174	793	12	31	5,311
Aklavik N/S	3	3	-	-	3,238
Arctic Bay N/S	9	13	-	-	1,177
Baker Lake N/S	81	81	-	-	3,918
Belcher Island (Sanikiluaq)	22	22	-	-	1,605
Broughton Island N/S	14	14	-	-	1,659
Cambridge Bay N/S	21	21	-	-	3,206
Cape Dorset N/S	20	22	-	-	2,722
Chesterfield Inlet N/S	20	30	-	-	1,482
Clyde River N/S	16	16	-	-	1,492
Coppermine N/S	28	29	1	2	3,911
Coral Harbour N/S	13	13	-	-	1,436
Eskimo Point N/S	68	69	-	-	4,691
Fort Franklin N/S	11	11	-	-	1,857
Fort Good Hope N/S	5	5	-	-	2,049
Fort Liard N/S	20	20	-	-	1,549
Fort McPherson N/S	27	27	-	-	2,517
Fort Norman N/S	13	13	-	-	855
Fort Providence N/S	5	5	1	2	1,914
Fort Resolution N/S	3	3	-	-	1,591
Fort Wrigley N/S	2	2	-	-	945
Gjoa Haven N/S	64	66	-	-	3,768
Grise Fiord N/S	1	- 2	-	-	595
Hall Beach N/S (Foxe)	5	5	-	-	1,256
Holman Island N/S	5	5	-	-	1,782
Igloodik N/S	27	28	-	-	1,770
Lake Harbour N/S	2	2	-	-	1,225
Nanisivik N/S	10	10	-	-	1,164
Norman Wells N/S	22	22	-	-	2,943
Pangnirtung N/S	32	32	-	-	3,876
Pelly Bay N/S	22	22	-	-	2,297
Pond Inlet N/S	16	17	-	-	2,470
Rankin Inlet N/S	154	161	-	-	5,656
Repulse Bay N/S	21	21	1	1	1,597
Resolute Bay N/S	12	12	-	-	888
Sachs Harbour N/S	5	5	-	-	856
Snowdrift N/S	6	6	-	-	1,963
Spence Bay N/S	46	48	-	-	3,466
Tuktoyaktuk N/S	17	17	-	-	2,466
Whale Cove N/S	17	18	-	-	973
<b>Sub-total Federal</b>	<b>2,781</b>	<b>11,373</b>	<b>194</b>	<b>970</b>	<b>103,960</b>
<b>Total N.W.T.</b>	<b>9,096</b>	<b>44,545</b>	<b>939</b>	<b>4,536</b>	<b>145,420</b>

Table 2 cont.

	1982/83	1983/84
<b>Budget Review Hospitals in N.W.T.</b>		
% of Total A&C Inpatient Days	60.8% (30,161 days)	74.5% (33,172 days)
% of Total NB Days	60.1% (3,603 days)	78.1% (3,566 days)
% of Total Outpatient Visits	20.2% (37,970 visits)	28.5% (41,440 visits)
<b>Federal Hospitals and Nursing Stations in N.W.T.</b>		
% of Total A&C Inpatient Days	39.2% (19,484 days)	25.5% (11,373 days)
% of Total NB Days	39.9% (2,392 days)	21.4% (970 days)
% of Total Outpatient Visits	79.8% (150,141 visits)	71.5% (103,980 visits)

**Summary 1983/84**

**N.W.T. Budget Review Hospitals**

1. Adult and children in-patient days were 74.5% of total in-patient days (44,545) in the N.W.T.
2. Newborn in-patient days were 78.1% of total newborn days (4,536) in the N.W.T.

Table 3

**Utilization of Hospital Services  
Outside the Northwest Territories by Province 1983/84**

Province	Inpatient A&C			Newborn			Outpatients	
	Separations	Patient Days	Cost	Separations	NB days	Cost	Visits	Cost
Yukon	55	128	38,960	3	14	425		
Alberta	1,630	17,363	6,853,104	78	484	23,670	2,538	104,728
British Columbia	150	990	281,223	10	79	2,844	648	26,406
Manitoba	1,012	6,562	2,564,449	169	786	4,668	621	27,199
New Brunswick	5	24	4,890	—	—	—	67	2,611
Nova Scotia	15	82	24,944	7	30	1,950	92	3,659
Newfoundland	11	57	20,190	—	—	—	47	1,868
Ontario	289	2,170	576,728	56	270	20,090	613	23,902
Prince Edward Island	3	43	1,110	1	4	140	10	384
Quebec	450	5,149	1,971,493	35	467	50,485	329	12,594
Saskatchewan	35	146	36,554	2	11	220	216	8,417
Outside Canada	14	63	21,211	—	—	—	33	1,115
<b>Total</b>	<b>3,649</b>	<b>32,777</b>	<b>12,404,556</b>	<b>361</b>	<b>2,145</b>	<b>104,492</b>	<b>5,214</b>	<b>212,883</b>

Alberta provides 53% of referred hospital services to the N.W.T.  
 Manitoba provides 20% of referred hospital services to the N.W.T.  
 Quebec provides 16% of referred hospital services to the N.W.T.  
 Ontario provides 7% of referred hospital services to the N.W.T.



Micro biology laboratory.



Table 4

Per Diem Cost by Major Hospital for Hospital Services  
Outside the Northwest Territories — 1983/84

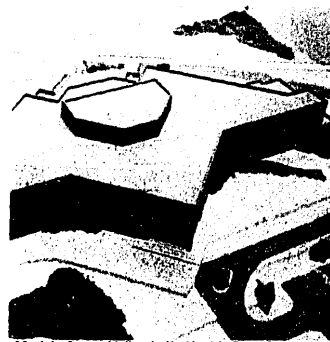
	1982/83	1983/84	% Change
<b>Alberta</b>			
Misericordia	280.00	365.00	40
Charles Camshell	250.00	365.00	46
W.W. Cross	320.00	365.00	14
Edmonton General	260.00	365.00	40
Royal Alexandra	290.00	365.00	26
University of Alberta	380.00	500.00	32
<b>Manitoba</b>			
St. Boniface General	312.25	411.00	32
Churchill Health Centre	387.00	429.00	11
Health Sciences Centre	323.65	455.00	40
Misericordia	213.00	250.00	17
<b>Ontario</b>			
Hospital for Sick Children	455.00	515.00	13
Toronto General	385.00	384.00	5
<b>Quebec</b>			
Queen Elizabeth	268.00	268.00	—
Montreal Childrens'	516.00	528.00	2
Montreal General	366.00	368.00	.50
Royal Victoria	400.00	400.00	—
Jewish General	359.00	360.00	.30

Table 4 presents the inpatient per diem cost of hospitalization charged to the N.W.T. by major hospitals outside the N.W.T.

Table 5

Utilization of Hospital/Medicare Services Inside  
The Northwest Territories by Community — 1983/84

	Medicare			Hospital		Other Hospital Services
	General Practice	Other Medical Services	Inpatient Days	Newborn Days	Out- patient Visits	
<b>Fort Smith Region</b>						
Fort Smith	15,113	6,656	5,044	227	4,903	453
Fort Resolution	1,341	1,202	1,299	26	1,707	25
Snowdrift	906	765	490	21	2,048	6
Detah	5	—	—	—	7	—
Yellowknife	47,832	50,996	11,941	1,156	26,087	3,220
Fort Rae	4,388	5,433	4,141	370	5,285	44
Pine Point	7,066	4,663	1,584	41	1,289	37
Hay River	20,937	10,968	7,021	203	6,232	497
Fort Providence	1,620	959	822	30	1,883	6
Reliance	6	6	—	—	5	—
Lac La Martre	586	706	487	15	496	13
Fort Simpson	2,058	2,156	1,547	151	3,562	25
Jean Marie River	81	112	86	—	85	15
Nahanni Butte	175	144	228	16	61	—
Fort Liard	491	565	760	107	1,395	14
Wrigley	233	300	111	9	1,055	5
Tungsten	1,019	957	216	26	145	6
Trout Lake	159	242	240	—	110	—
Kakisa Lake	42	13	51	—	30	4
Echo Bay (Rad.)	9	18	14	—	8	—
Bathurst Inlet	34	32	15	—	32	5
<b>Totals</b>	<b>104,144</b>	<b>86,893</b>	<b>36,097</b>	<b>2,398</b>	<b>56,443</b>	<b>4,375</b>
<b>Inuvik Region</b>						
Norman Wells	1,220	1,770	665	84	2,223	26
Fort Norman	661	811	651	49	958	1
Fort Good Hope	967	1,013	838	119	2,010	4
Fort Franklin	565	725	505	59	1,908	5
Colville Lake	111	36	104	14	120	—
Inuvik	15,443	9,741	5,834	642	9,128	299
Aklavik	1,627	1,594	1,352	152	3,298	2
Fort McPherson	1,841	1,137	1,231	101	2,585	29
Arctic Red River	428	266	354	9	180	1
Tuktoyaktuk	2,143	1,991	1,566	150	2,630	3
Sachs Harbour	365	265	187	9	838	—
Paulatuk	540	441	316	7	129	2
<b>Totals</b>	<b>25,911</b>	<b>19,790</b>	<b>13,603</b>	<b>1,396</b>	<b>26,007</b>	<b>372</b>



Model of new Yellowknife Health Care Centre.

Table 5 cont.

	Medicare		Hospital			Other Hospital Services
	General Practice	Other Medical Services	Inpatient Days	Newborn Days	Out- patient Visits	
<b>Baffin Region</b>						
Igloolik	1,089	1,565	1,056	163	2,031	4
Hall Beach	549	700	456	97	1,186	1
Alert	53	201	30	—	29	10
Pond Inlet	963	1,201	974	149	2,496	7
Clyde River	775	812	862	111	1,584	—
Arctic Bay	591	408	571	50	1,249	11
Resolute Bay	459	599	285	31	816	5
Grise Fiord	94	92	73	12	575	—
Nanisivik	391	554	265	115	1,087	4
Frobisher Bay	14,513	8,757	5,285	430	5,986	109
Lake Harbour	368	464	356	35	1,280	1
Resolution Bay	—	—	—	—	—	—
Cape Dorset	1,297	1,807	1,330	114	2,654	13
Pangnirtung	1,212	1,706	1,070	171	3,879	2
Broughton Island	798	689	559	129	1,780	1
Cape Dyer	5	1	—	—	2	—
Port Burwell	3	—	3	—	—	—
Sanikiluaq	162	250	1,103	92	1,616	—
<b>Totals</b>	<b>23,457</b>	<b>19,806</b>	<b>14,278</b>	<b>1,705</b>	<b>28,250</b>	<b>158</b>
<b>Keewatin Region</b>						
Rankin Inlet	1,586	2,123	1,779	193	5,566	22
Eskimo Point	1,619	1,652	1,710	303	4,660	20
Chesterfield Inlet	435	429	199	14	1,532	6
Baker Lake	1,219	1,655	1,659	169	3,972	16
Coral Harbour	717	682	695	87	1,441	—
Repulse Bay	556	836	773	67	1,693	4
Whale Cove	317	322	254	14	948	5
<b>Totals</b>	<b>6,449</b>	<b>7,699</b>	<b>7,069</b>	<b>847</b>	<b>19,813</b>	<b>73</b>

Table 5 cont.

	Medicare		Hospital			
	General Practice	Other Medical Services	Inpatient Days	Newborn Days	Out-patient Visits	Other Hospital Services
<b>Kitikmeot Region</b>						
Holman Island	439	928	396	67	1,709	7
Cambridge Bay	1,930	2,837	1,481	155	3,310	53
Coppermine	1,064	2,607	1,384	125	3,904	11
Gjoa Haven	1,124	1,314	1,386	89	3,752	33
Spence Bay	740	1,969	1,087	99	3,396	5
Pelly Bay	1,050	937	521	44	2,303	13
<b>Totals</b>	<b>6,347</b>	<b>10,592</b>	<b>6,265</b>	<b>579</b>	<b>18,374</b>	<b>122</b>
<b>Grand Totals</b>	<b>166,308</b>	<b>144,780</b>	<b>77,326</b>	<b>6,949</b>	<b>148,887</b>	<b>5,100</b>

A comparison of utilization with 1982/83 shows the following changes in utilization in 1983/84.

Region	Medicare Services		Inpatient Days		Hospital Care Newborn Days	
	82/83	83/84	82/83	83/84	82/83	83/84
Fort Smith	104,236	104,144	40,871	36,097	3,095	2,398
Inuvik	21,250	25,911	15,327	13,603	1,377	1,396
Baffin	24,277	23,457	15,064	14,278	1,269	1,705
Keewatin	9,134	6,449	9,686	7,069	1,000	847
Kitikmeot	7,283	6,347	6,516	6,265	684	579

Region	Outpatient Visits		Other Services	
	82/83	83/84	82/83	83/84
Fort Smith	62,908	56,443	3,271	4,375
Inuvik	31,725	26,007	181	372
Baffin	46,232	28,250	480	158
Keewatin	28,626	19,813	126	73
Kitikmeot	19,632	18,374	73	122

G.N.W.T. moved to the accrual accounting basis, thereby extending the 1982/83 year resulting in 15 months. 1983/84 figures are based on 12 month periods.



Ultrasound equipment in use.

Table 6

Utilization of Physician Services  
By Type of Service — 1982/83-1983/84

Fee Code	Name	1982/83				1983/84				Comparison Change 1982/83 - 1983/84			
		Services	% of Tot	Serv./ Pop	Cost	Services	% of Tot	Serv./ Pop	Cost	Services	% Ch.	Cost Change	% Change of Cost
A	General Practice	166,172	53	3.46	3,286,547	125,589	52.98	2.57	3,538,665	40,583	24	271,525	8
B	General Procedures	14,415	5	.30	182,327	10,519	4.43	.21	214,874	3,896	27	32,547	18
C	—	—	—	—	—	—	—	—	—	—	—	—	—
D	Anaesthesia	2,222	1	.05	54,519	880	.37	.02	57,540	1,342	60	3,021	6
E	Laboratory	31,191	10	.65	212,195	28,330	11.95	.58	213,628	2,861	9	1,433	0.7
F	Lab & Pathology	2	—	—	67	—	—	—	—	—	—	—	—
G	Obstetrics	16,926	.05	.35	672,383	14,827	6.25	.30	727,595	2,099	12	55,212	8
H	Gynecology	5,528	2	.12	266,120	4,161	1.75	.08	337,269	1,367	25	71,145	27
I	—	—	—	—	—	—	—	—	—	—	—	—	—
J	Cardio-Vas. Surg.	1,067	1	.02	69,820	258	.10	.01	54,192	809	76	15,625	22
K	General Surgery	8,894	2.9	.19	471,372	4,552	1.92	.09	468,226	4,332	49	3,146	.7
L	Orthopaedics	6,374	2.0	.13	323,761	3,465	1.46	.07	312,613	2,909	47	11,148	3
M	Neurosurgery	515	1	.01	37,671	185	.07	—	42,236	330	64	4,565	12
N	Urology	1,842	1	.04	92,231	1,030	.43	.02	85,939	812	44	6,292	7
O	Otolaryngology	5,579	1.8	.12	253,846	3,857	1.62	.08	268,039	1,722	31	14,193	6
P	Ophthalmology	13,702	4.4	.29	247,661	13,664	5.76	.28	224,178	38	.3	23,483	9
Q	Plastic Surgery	1,771	1	.04	110,183	587	.24	.01	96,579	1,148	67	1,360	12
R	Internal Med.	10,335	3	.22	282,425	6,962	2.93	.14	315,793	3,373	33	33,363	12
S	Psychiatry	1,949	1	.04	101,002	1,419	.59	.03	108,945	530	27	6,943	7
T	Paediatrics	10,105	3	.21	276,026	6,417	2.70	.13	341,639	3,688	36	65,613	24
U	Dermatology	768	1	.02	12,477	362	.15	.01	10,641	406	53	1,835	15
V	Phy. Med. & Rehab.	365	1	—	7,959	97	.04	—	5,791	268	73	2,163	27
W	X-Ray	8,818	2.8	.18	158,170	7,399	3.12	.15	146,644	1,419	16	11,526	7
X	X-Ray	2,467	1	.05	116,876	2,172	.91	.04	110,181	295	12	6,695	6
Z	Neurology	412	1	—	15,392	317	.13	.01	18,793	95	4	3,401	22
	<b>Total</b>	<b>311,408</b>	<b>100</b>	<b>6.47</b>	<b>7,251,030</b>	<b>237,049</b>	<b>100</b>	<b>4.83</b>	<b>7,700,000</b>	<b>74,322</b>	<b>36</b>	<b>646,247</b>	<b>12</b>

G.N.W.T. moved to the accrual accounting basis, thereby extending the 1982/83 year resulting in 15 months.

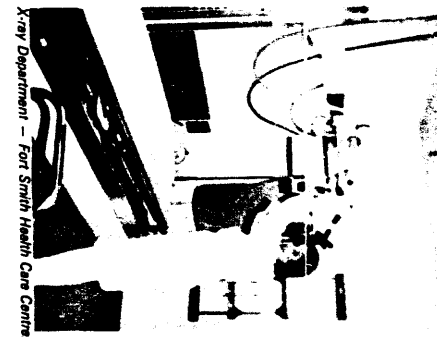
Table 6 presents the number of services provided and the amounts of payments made under Medicare by medical specialty.

Table 7

Utilization of Patient Days In and Outside  
The Northwest Territories by Age 1983/84

Facility	Under 1	1-4	5-14	15-24	25-44	45-64	65-74	75+	Total
Fort Smith Health Centre	257	36	61	127	156	295	147	364	1,443
H.H. Williams Hospital	601	142	224	842	1,717	910	1,423	602	6,455
Stanton Hospital	5,082	1,363	1,423	2,991	4,241	2,021	701	1,633	19,455
Baffin Regional Hospital	2,013	641	479	1,897	1,631	1,048	475	154	8,338
Inuvik Hospital	1,327	619	581	1,859	2,703	1,143	492	460	9,182
Fort Simpson Hospital	293	175	63	66	81	40	35	71	824
Rae/Edzo Hospital	329	28	60	124	421	139	36	280	1,417
Yellowknife Detox Centre	—	—	—	172	558	370	30	40	1,170
Nursing Stations	139	102	102	217	173	87	47	55	922
Outside the N.W.T.	6,312	1,382	1,915	5,904	9,051	7,611	2,364	1,475	36,014
<b>Total Patient Days</b>	<b>16,353</b>	<b>4,388</b>	<b>4,908</b>	<b>14,197</b>	<b>20,732</b>	<b>13,664</b>	<b>5,750</b>	<b>5,34</b>	<b>85,126</b>

The utilization pattern reflects the age group distribution and high birth rate in the N.W.T.



**Table 8**

**Utilization of Extended/Chronic Care Services  
In and Outside The Northwest Territories — 1983/84**

<u>In N.W.T.</u>	<u>Patient Days</u>		<u>Cost</u>	
	<u>1982/83</u>	<u>1983/84</u>	<u>1982/83</u>	<u>1983/84</u>
Stanton Yellowknife Hospital	1,637	1,254	122,775	82,806
H.H. Williams Hospital	5,135	5,481	385,125	328,293
Fort Smith Health Centre	4,051	3,946	303,825	274,222
Inuvik General Hospital	2,627	2,368	197,025	175,495
Fort Simpson Hospital	730	700	54,750	31,500
<b>Sub-Total</b>	<b><u>14,180</u></b>	<b><u>13,749</u></b>	<b><u>1,063,500</u></b>	<b><u>892,317</u></b>
<u>Outside N.W.T.</u>				
St. Amant Centre	610	1,294	51,966	145,893
<b>Total</b>	<b><u>14,790</u></b>	<b><u>15,043</u></b>	<b><u>1,115,446</u></b>	<b><u>1,038,211</u></b>

Table 8 indicates the patient days and cost of extended/chronic care services. G.N.W.T. moved to the accrual accounting basis, thereby extending the 1982/83 year resulting in 15 months. 1983/84 figures are based on a 12 month period.

**Table 9**

**Utilization of Medicare\* Services  
By N.W.T. Regions**

<u>Regions</u>	<u>Population</u>	<u>Total Services</u>	<u>Services/ Population</u>
Fort Smith	23,780	191,037	8.03
Inuvik	8,315	45,701	5.50
Baffin	8,969	43,263	4.82
Keewatin	4,569	14,148	3.10
Kitikmeot	3,506	16,939	4.83
<b>Totals</b>	<b><u>49,137</u></b>	<b><u>311,088</u></b>	<b><u>6.29</u></b>

\*Medicare Services refers to total of general practice and other medical services.

Table 10

**Ranking Order Six Most Common Diseases for N.W.T. Regions Based on Use of Physician Services**

Region	Population	Total Physician Services	Services/Population	Ranking Order of Six Most Common Diseases					
				1	2	3	4	5	6
Fort Smith	23,780	191,037	8.03	C <sub>1</sub>	C <sub>23</sub>	C <sub>21</sub>	C <sub>16</sub>	C <sub>22</sub>	C <sub>11</sub>
Inuvik	8,315	45,701	5.50	C <sub>1</sub>	C <sub>23</sub>	C <sub>16</sub>	C <sub>11</sub>	C <sub>21</sub>	C <sub>22</sub>
Baffin	8,669	43,263	4.82	C <sub>1</sub>	C <sub>23</sub>	C <sub>16</sub>	C <sub>11</sub>	C <sub>22</sub>	C <sub>15</sub>
Keewatin	4,569	14,148	3.10	C <sub>1</sub>	C <sub>23</sub>	C <sub>11</sub>	C <sub>16</sub>	C <sub>13</sub>	C <sub>15</sub>
Kitikmeot	3,506	16,839	4.83	C <sub>1</sub>	C <sub>23</sub>	C <sub>11</sub>	C <sub>21</sub>	C <sub>16</sub>	C <sub>22</sub>
<b>Total</b>	<b>49,137</b>	<b>311,088</b>	<b>6.29</b>						

List of Diseases

- C<sub>1</sub> Diseases of the Respiratory Track
- C<sub>11</sub> Diseases of the Middle Ear
- C<sub>13</sub> Dental Diseases
- C<sub>15</sub> Problems of Pregnancy, Labour and Delivery
- C<sub>16</sub> Dermatological Problems
- C<sub>21</sub> Eye Diseases
- C<sub>22</sub> Disorders of the Bones & Joints
- C<sub>23</sub> General Symptoms

Comments

The ranking order of diseases for the five N.W.T. Regions demonstrates utilization of medical services by population. It is clear that respiratory diseases are the number one problem for all Regions.



*Routine blood sampling.*



Table 11

Utilization of Services in N.W.T. Regions  
Showing Common Diseases in Incidence Ranking Order

<u>Total Services</u>	<u>Fort Smith</u>	<u>Inuvik</u>	<u>Baffin</u>	<u>Keewatin</u>	<u>Kitikmeot</u>
General Practice	104,144	25,911	23,457	6,443	6,347
Other Med. Serv.	86,893	19,790	19,806	7,693	10,582
Inpatient Days	36,097	13,603	14,278	7,069	6,266
Newborn Days	2,398	1,396	1,705	847	579
Outpatient Visits	54,443	26,007	28,250	19,813	18,574
Other Hosp. Serv.	4,375	372	158	73	122
Population	23,780	8,315	8,969	4,569	3,508
Six Most Common Diseases					
1	Diseases of the Respiratory Tract	Diseases of the Respiratory Tract	Diseases of the Respiratory Tract	Diseases of the Respiratory Tract	Diseases of the Respiratory Tract
2	General Symptoms	General Symptoms	General Symptoms	General Symptoms	General Symptoms
3	Eye Diseases	Dermatological Problems	Dermatological Problems	Diseases of the Middle Ear	Diseases of the Middle Ear
4	Dermatological Problems	Diseases of the Middle Ear	Diseases of the Middle Ear	Dermatological Problems	Eye Diseases
5	Disorders of the Bones & Joints	Eye Diseases	Disorders of the Bones & Joints	Dental Diseases	Dermatological Problems
6	Diseases of the Middle Ear	Disorders of the Bones & Joints	Problems of Pregnancy, Labour & Delivery	Problems of Pregnancy, Labour & Delivery	Disorders of the Bones & Joints

