

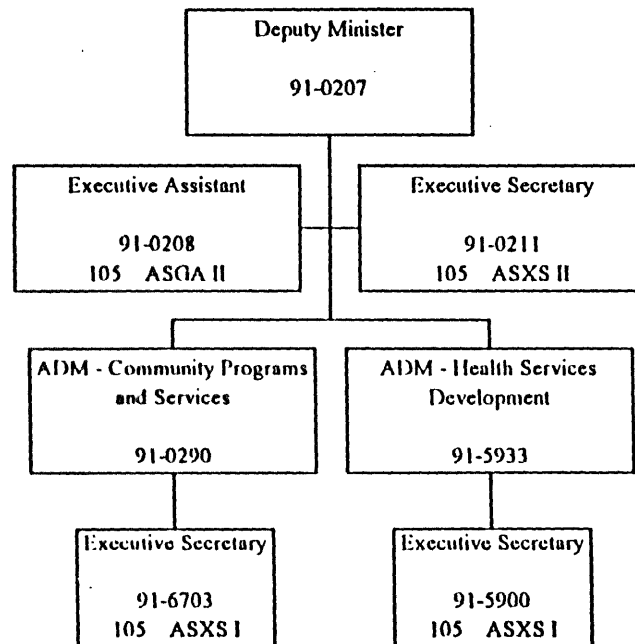


TABLED DOCUMENT NO. 103 - 12 (7) TABLED ON APR 27 1995

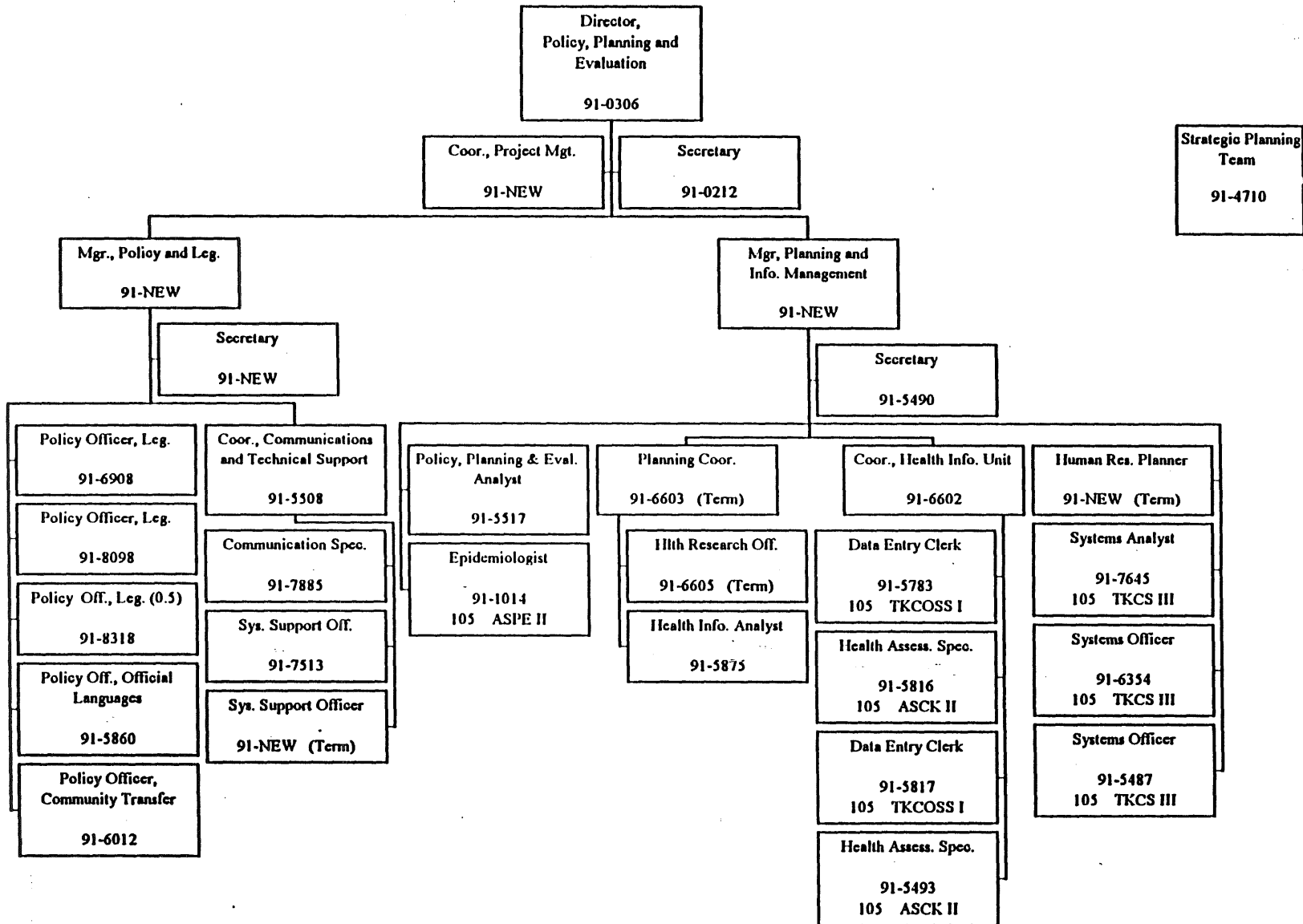
**DEPARTMENT OF HEALTH AND SOCIAL SERVICES
ORGANIZATION CHARTS**

MASS.
LEGISLATIVE COMMITTEE
APR 28 1995
Yellowfield, MA.S.T.

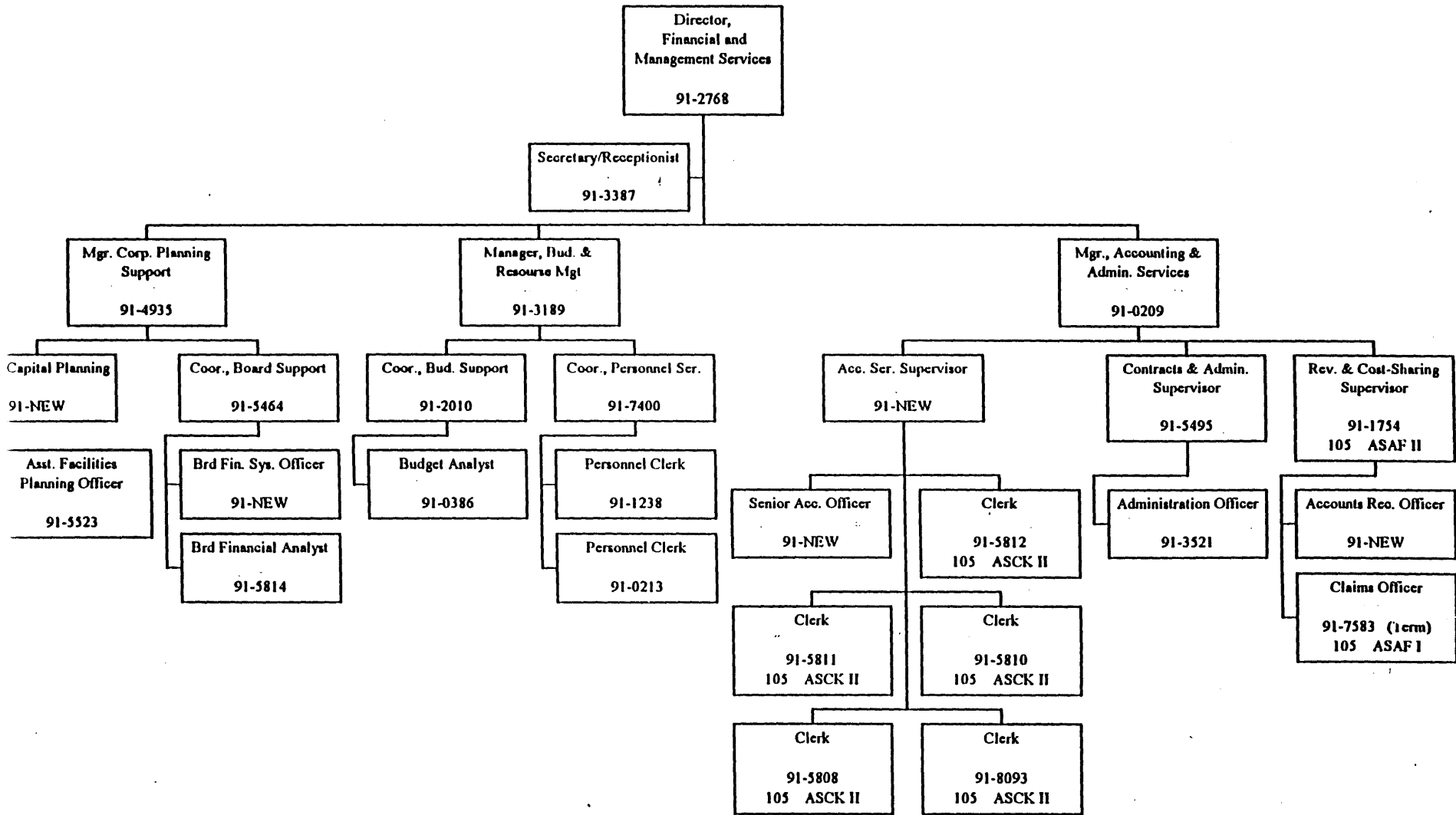
DEPARTMENT OF HEALTH AND SOCIAL SERVICES
DIRECTORATE
FEBRUARY 6, 1995



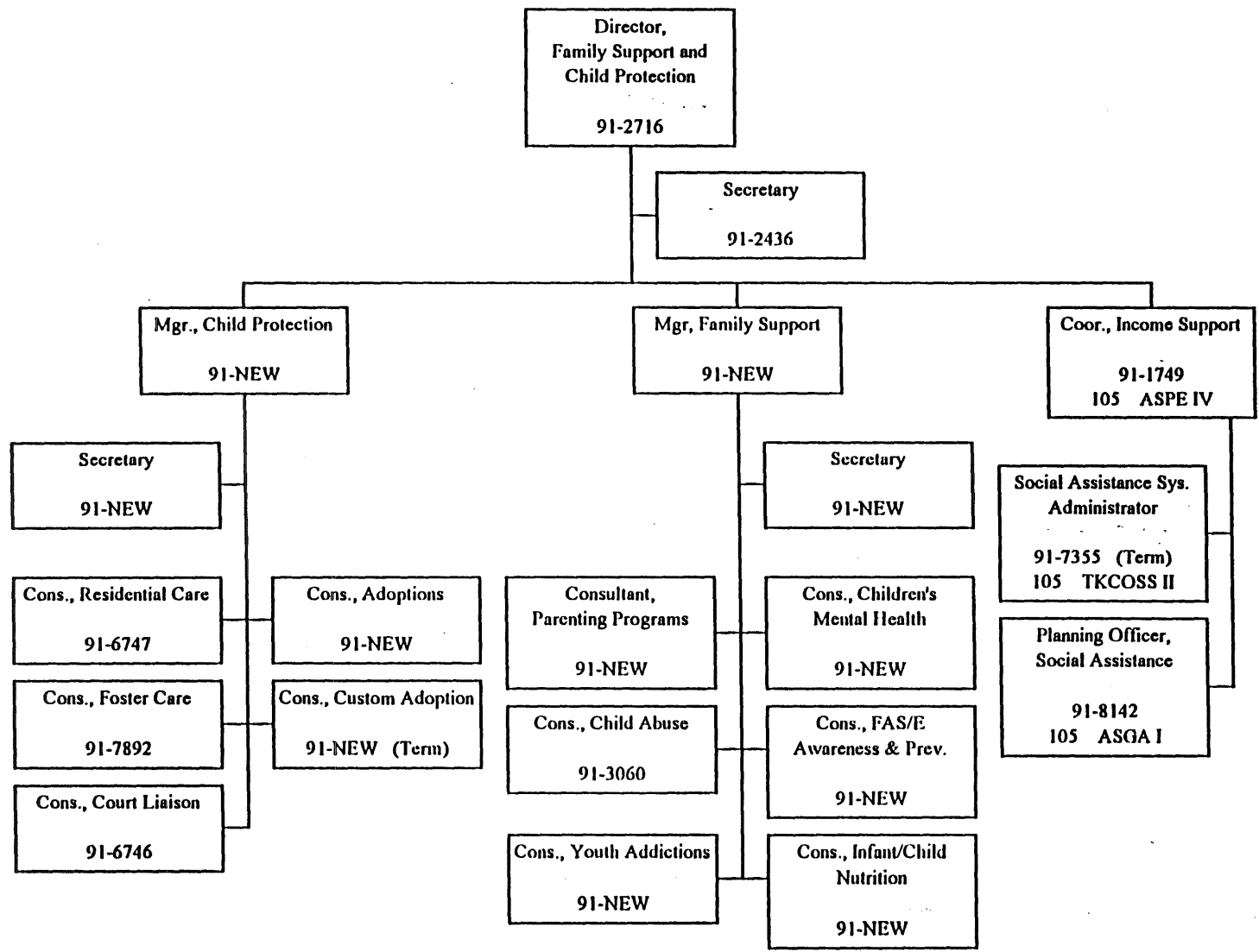
**POLICY, PLANNING & EVALUATION
FEBRUARY 6, 1995**



**FINANCIAL AND MANAGEMENT SERVICES
FEBRUARY 6, 1995**

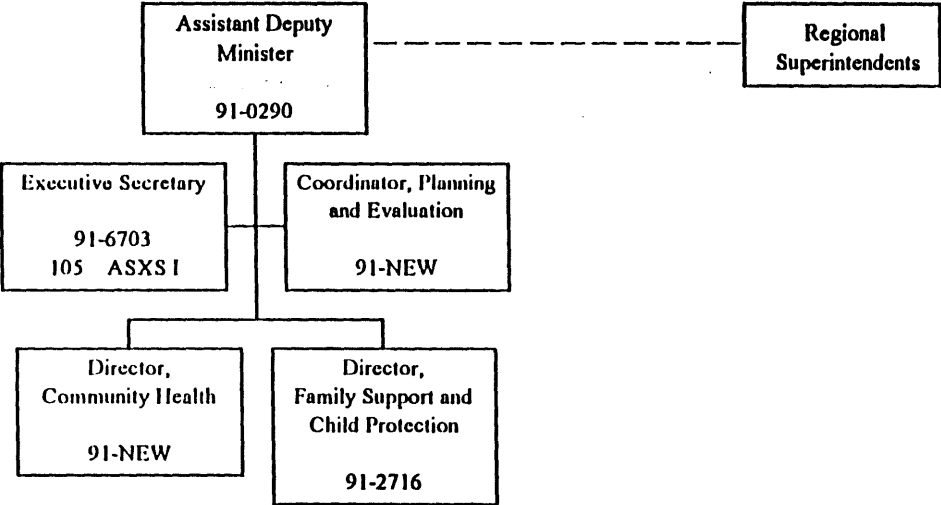


**FAMILY SUPPORT AND CHILD PROTECTION
FEBRUARY 6, 1995**

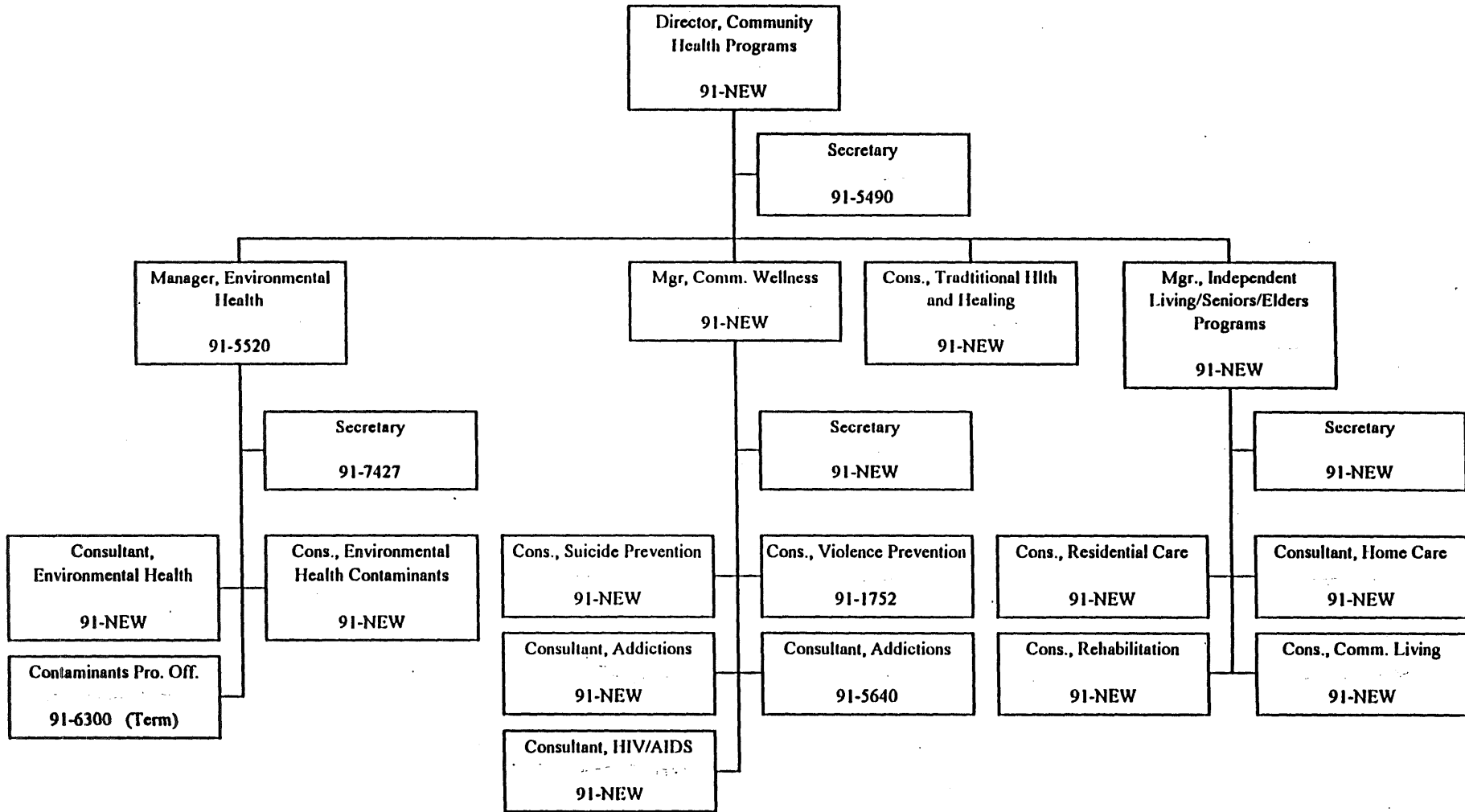


COMMUNITY PROGRAMS AND SERVICES

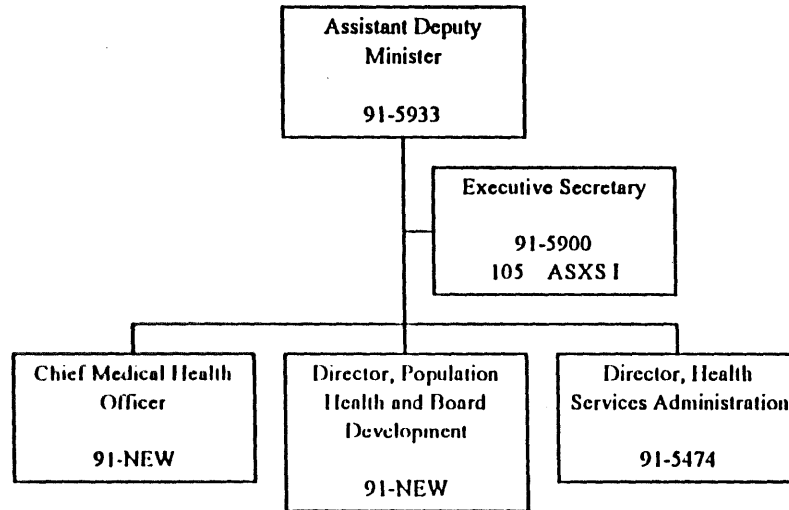
FEBRUARY 6, 1995



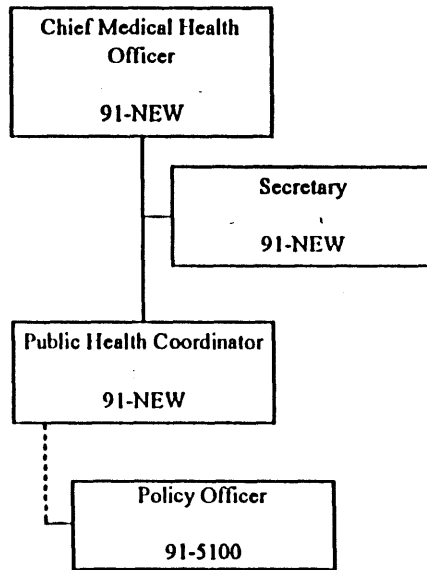
**COMMUNITY HEALTH PROGRAMS
FEBRUARY 6, 1995**



**HEALTH SERVICES DEVELOPMENT
FEBRUARY 6, 1995**



OFFICE OF THE CHIEF MEDICAL HEALTH OFFICER
FEBRUARY 6, 1995



**POPULATION HEALTH & BOARD DEVELOPMENT
FEBRUARY 6, 1995**

