



Rebecca P. Idlout Library Board  
 Bag 212  
 Pond Inlet, NT  
 X0A 0S0

February 27, 1992

The Hon. John Poffard, MLA  
 Minister of Finance  
 Government of the NWT  
 P.O. Box 1320  
 Yellowknife, NWT  
 X1A 2L9

Government Library

MAR 10 1992

Government of N.W.T.  
 Yellowknife, N.W.T.

The Library Board has learnt that the new Library building is in danger of being cancelled in favor of a joint school-community facility. The community is very disappointed over the possible loss of the new Library and wish to outline the reasons why this would be a serious mistake.

#### **Advantages of proceeding with the new Library.**

- The community has been involved with the planning of the new Library, and was pleased when it was approved.
- The community has begun to identify the Library as separate from the schools
  - many people (especially elders) feel uncomfortable in the schools, but are happy to come to the Library
  - literacy is something that does not take place only in schools
- The Library Board does not anticipate that the Library will be a stand-alone facility for many years. The new Library was designed with the possibility of future expansion. The Library Board has consulted with Museums and Economic Development and Tourism about a joint use facility.
- Current plans for the Library
  - a lot has been selected which is mid-point between the two projected schools
  - the building design has its own community generated identity
  - building will be a secure location for historical books, photos and artifacts; donations and grant monies are contingent upon security of items
  - will be a tourist attraction; the only place that tourists can learn about the area and its history

#### **Disadvantages of joint school-community Library.**

The new high school will be 700 metres away from the elementary school.

- There are two separate schools in Pond Inlet. Obviously a joint Library facility will be located in the high school, since the need for a Library will be greater for high school students than elementary students. The new high school will be on the extreme limit of town. The new high school will be 700 metres away from the elementary school; elementary teachers and students will be reluctant to go 700 m

along a busy road in -40 degree weather in order to go to the Library.

- The current Library location (in a portable classroom belonging to the senior school) will be needed as a classroom in August 1992 or 1993. At this point the community library will be forced to close due to lack of any other possible location in town.
- There is currently no school library policy concerning capital funding for libraries, or for library personnel, or library materials. This makes a school-community facility a tenuous arrangement; the local librarian constantly has problems with access to Library materials, security, and general maintenance due to teachers unfamiliar with library skills and policies supervising students while in the Library. Under current fiscal constraint, principals are unable to allocate adequate teacher time for library duties, and the government is also unable to fund library personnel for each school.

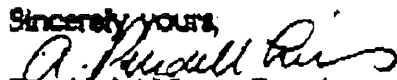
#### **Financial considerations:**

- \$80,000 has already been spent on a feasibility study and architectural fees; the architectural plans have already been completed.
- Money for construction of the building has already been allocated, and therefore should not be affected by budget cuts.
- There are no other capital projects in Pond Inlet this year. This contributes to high unemployment in Pond Inlet.
- The current economic slow-down has resulted in a competitive bidding environment; construction costs are down 10%.

Since its opening in November 1988, the community library has become an integral part of the community; an information resource centre; a keeper of historical information; a venue to promote local authors and artists, and a promoter of literacy for all ages. The programming and materials borrowed from the community library are one of the highest per capita in the NWT. Much of the success of the Library has been its "separateness" from the schools; Library functions and activities are perceived as community events, not school events. We believe that it is extremely important that the Library keep functioning in this manner in Pond Inlet. In order to do so, the new Library facility needs to be built as previously promised.

Thank you for your further consideration of this matter.

Sincerely yours,

  
Pond Inlet Library Board

cc. Mr. John Todd, MLA  
The Hon. Titus Aliooloo, Minister of Culture and Communications  
Mr. Ron Mackenzie, Director, NWT Public Library Services.

STATEMENT OF INTENT  
REBECCA P. IDLOUT COMMUNITY LIBRARY  
POND INLET, N.W.T.

The construction of a new community library in Pond Inlet stands to be an important event in 1992. It will be in this modest building that the stories of the past will be archived and the stories of the today recorded.

For the past three years, Pond Inlet's inventory of books and oral histories, video tapes and photographs have been squeezed into a temporary space, without place or form.

The Rebecca P. Idlout Library will bring these resources to a home. It will be a building distinguished by its form and comfortable spaces. It will be a community facility that residents will want to take visitors to, and a place where people will linger far longer than they intended.

In Pond Inlet, the Library will be located at the edge of the community closest to Mount Herodier. It will be one of the first buildings in a new commercial sub-division adjacent to the Tahoonik-Sahoonik Hotel and the N.W.T. government offices. The entrance to the building will be informal, designed to welcome people through its doors. The entrance will be well lighted and sheltered from prevailing wind, perhaps offering a bench for those waiting for rides. There will be a permanent ashtray for the smokers.

The regular users and the curious will be attracted through the doors into a well lighted air lock entry. Once inside the door, the initial view will be through a windowed door to exhibit of a familiar country image -- perhaps old photographs, samples of traditional clothing, or local art work.

Immediately upon entering the building there will be a coatroom to one side with a floor without carpet, so that is easily cleaned. The coat room will have a bench and storage spaces to encourage users to drop their coats, boots and parcels. The circulation desk will be in viewing distance of the coat room for security. Washrooms will be located nearby.

Users will have a sense of entry as they pass through a threshold in the 'Library'. It will be carpeted, with subtly lighted reading alcoves, creating an intimate and comfortable impression much like the living room of one's

own home. As you scan the room you will begin to discover the various opportunities offered by the Library, be it the special spaces designed for magazines, listening tapes, or book stacks.

To one side the Librarian, your 'host' will be busy at the circulation desk, which will be oriented to guide your transition into the main activity space of the building.

Your attention will be directed immediately to the heart of the building, the story-telling 'pit' or circle. It may be formed through a lowered floor, or half walls, or in the nest of a bay window. The end result will be a cozy space, where users will gather and stories told.

The main library space will be a focal point for Pond Inlet, housing books about the North Baffin, resource materials about Canada and the world, and pleasure reading. Where possible, there will be in-built display stands in spaces to feature temporary or permanent exhibits or photographs. A high ceiling will convey a sense of space and light.

Nearby, the Librarian's office will be situated to allow for light on two sides, ideally with a view to Bylot Island and the building approach. The placement will be near the circulation desk and entry.

In the end, the Rebecca P. Idlout Library will be a simple statement about the importance of the Library to the community's pride and self-esteem in their past and their contribution to the future.

# Architectural

## The Ideas

During the meeting with the Library Board it became apparent the strong community commitment to the project. Interest by the community in general was also well demonstrated by the eleven calls during the radio phone-in show.

From these discussions the following ideas have been outlined:

- the building should be distinctive, yet simple in form
- the building should be welcoming and comfortable for all ages
- the building should be a place where elders feel comfortable to come and tell their stories
- "I feel more comfortable talking to elders in an igloo" one youth stated
- the building should have high ceilings and lots of sunlight
- the building should be a cultural and educational centre with an image of a place which has more than books
- "the whole town is a family"
- a comfortable reading "pit" should be a focal point in the facility

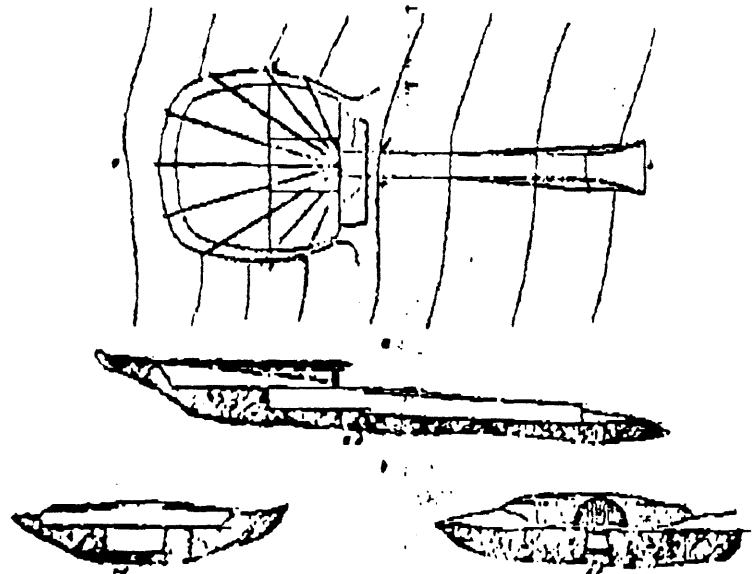
### The Concept

Drawing from this strong awareness of comfort and the closeness of family in the community, we have tried to achieve a "community living room" atmosphere for the Library in Pond Inlet. To do this we have drawn upon the form of the Inuit *Qamaq*.

648

#### THE CENTRAL INKING.

Those in good condition have a long stone entrance (*ka'teng*) (Fig. 400), sometimes from fifteen to twenty feet long. This is made by cutting an excavation into the slope of a hill. Its walls are covered with large slabs of stone about two and a half feet high and three feet wide, the space between the slabs and the sides of the excava-



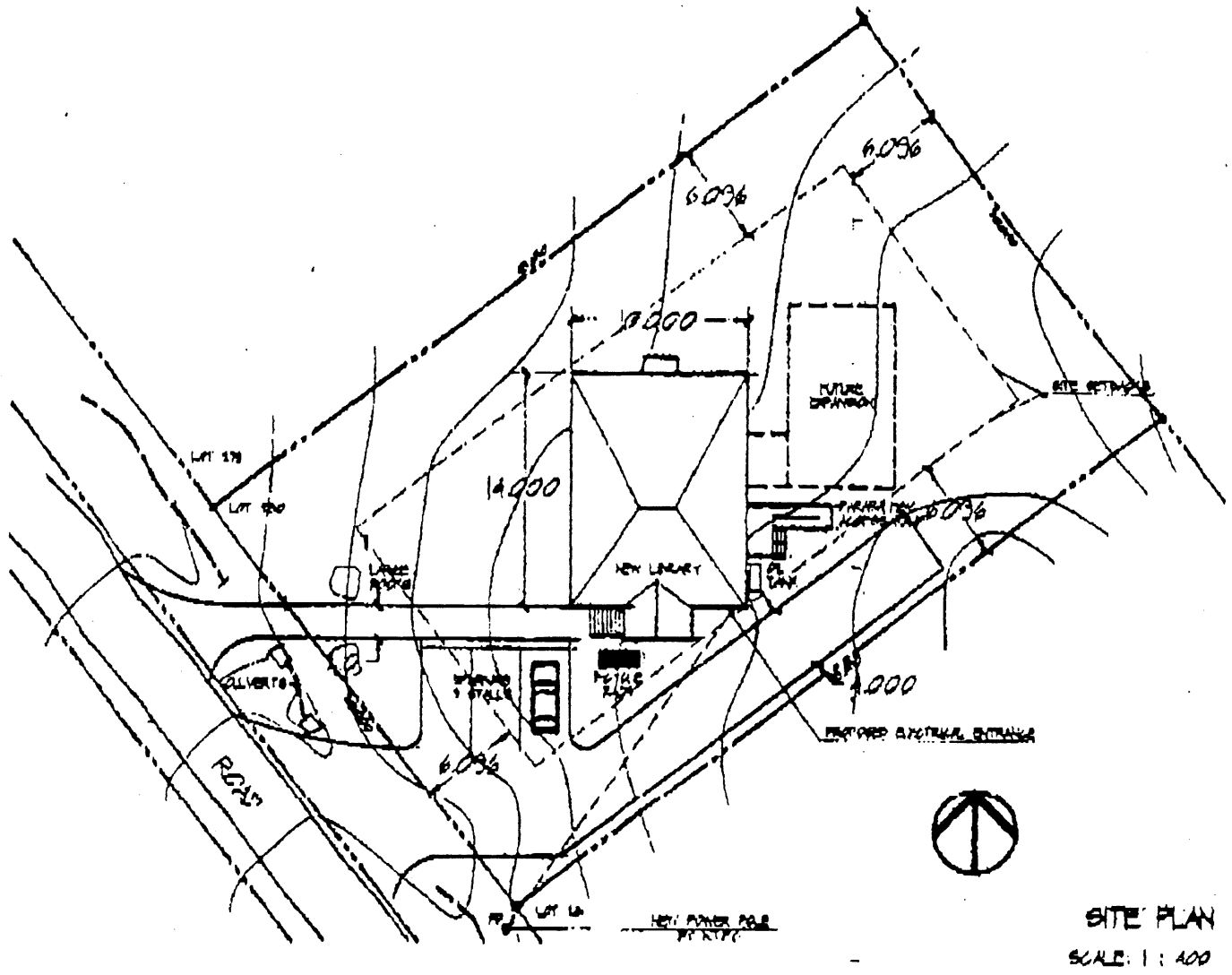
The qamaq and sections of qamaq of stone house.

The Inuit at one time lived in small one room houses called *Qamaqs*. These were constructed of whalebone ribs or drift wood with a skin or canvas covering and sod used as insulation. Sometimes large *Qamaqs* were used for several families.

A community *Qamaq* will become the new library for Pond Inlet, where any member of the community can come on a cold winter day to relax and explore stories in many forms.

### Siting

The site selected for the library is a large site on the outskirts of the community. It slopes up from from to back. A dramatic view to Bylot Island is to the north and west, although construction on the neighboring site, could limit the view to the east.



We have chosen to locate the building roughly in the centre of the site allowing for future expansion to the back of the site and parking and building approach to the front.

Although the present community lays to the west, future expansion of the community will gradually move the town centre to the south of the library. We have chosen to locate the entrance of the library to the south turning the building on a north south axis creating a more informal placement on the site. This placement also orients the building to the contours of the site minimizing the contour difference under the building allowing the building to stay closer to the ground.

We have chosen to move the paraplegic access and loading to the rear of the site at the second fire exit to minimize the ramp required.

Vehicle parking will be located at the front of the building (southwest) along with a service road to the southeast side of the site to the concealed oil tank and service entrance.

## Building Organization

We have chosen to layout the building in a simple straightforward manner. The symmetry of the traditional "Qamaq" works well for the library's spatial organization with the entry lobby leading to the main library space centrally located between the service spaces and the Librarian's workroom.

The librarian's workroom has been located to the southwest corner to take advantage of the view to Bylot Island and to provide a view to the building approach. Windows on two sides of this room will provide a pleasant space with south light.

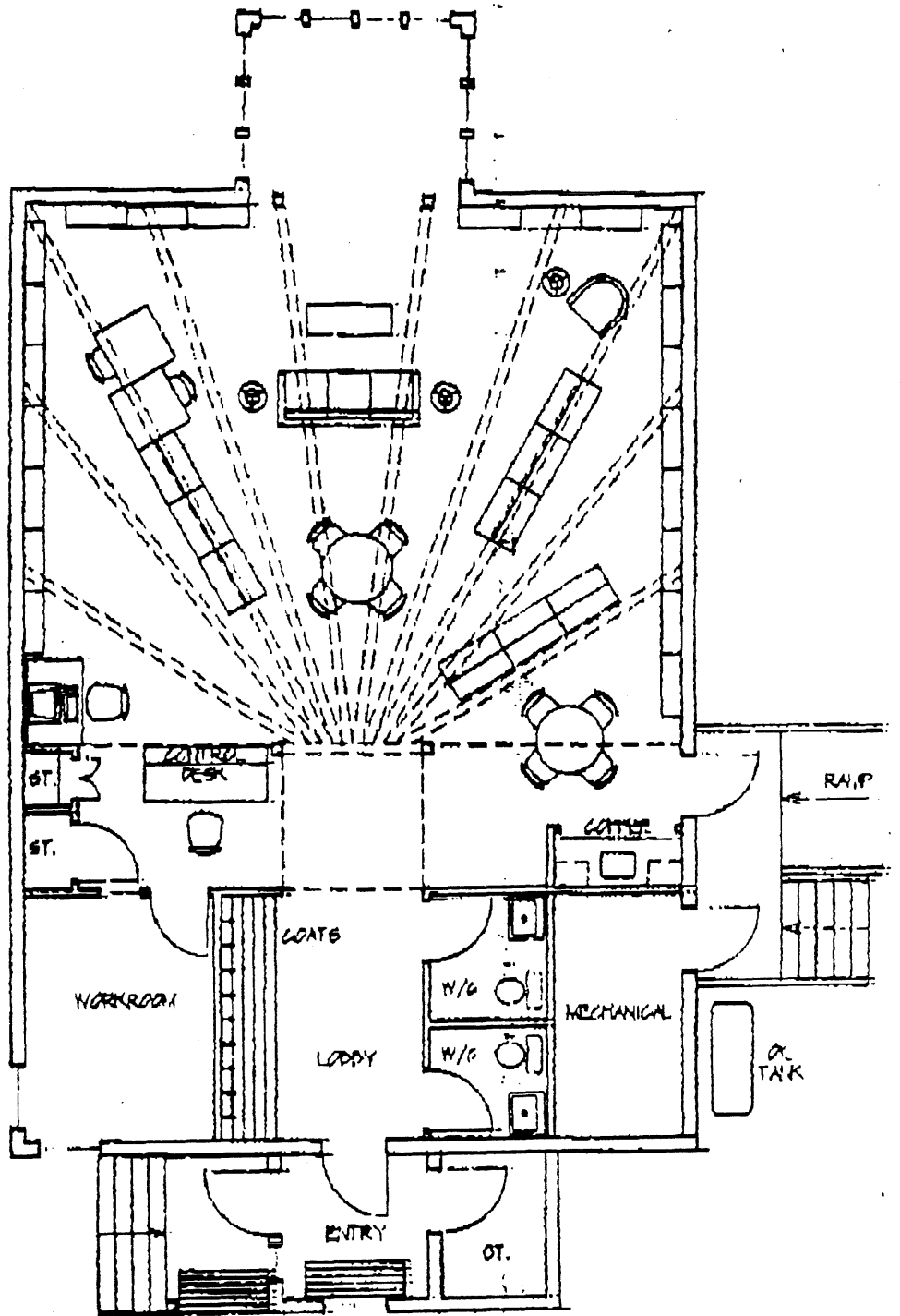
The mechanical room has been located to the southeast corner in an effort to hide it's oil tank, service door and associated wall penetrations from public view.

The main library space will be located to the north end of the building allowing a large bay window to look out onto the dramatic view of Bylot Island. A large clerestorey window will bring south light into the space. This space will be the largest space in the building. Furniture will be used to break this space into cozier spaces yet leaving the opportunity for the furniture to be pushed aside and allow larger groups gather.

In an effort to ensure the elders feel comfortable to come and tell their stories and to create a cozy comfortable place in the building, we have chosen a *Qamaq* as the focal reading "pit."

The airlock entry will reach out to the south from the building. A sheltered front porch will welcome the community.





**FLOOR PLAN**  
SCALE: 1" = 100'

**Architectural Form**

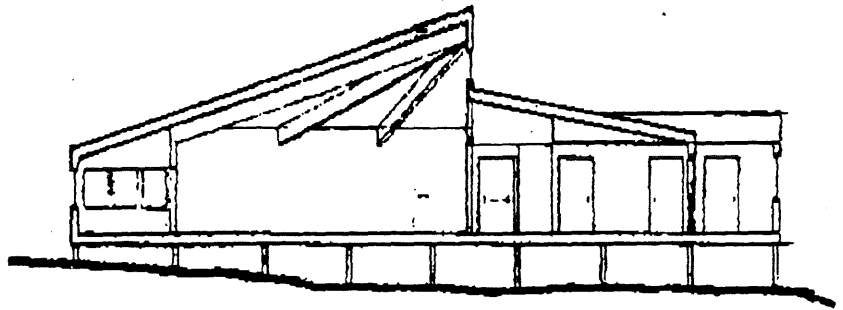
The building plan has been kept uncomplicated, in response to the limited budget and the DPW design guidelines which recommend forms of minimal volume and area.

Two elements depart from the otherwise rectangular box approach to the building, the ceiling over the main library and the bay window over looking Bylot Island.

### Main Library Ceiling

In response to the community's desire to have a distinctive building, bring in south light and provide a high ceiling to the main library space, we have brought the ceiling of the main library space higher than the support spaces. It is with this roof which we have taken the opportunity to reflect the *Qumag* in the built form.

From Francis Boas' The Central Eskimo, roof structures of traditional *qumags* are shown as a group beams radiating



SECTION A

SCALE 1 : 100

from a point above the entry. Replicating this structure in the Pond Inlet Library, we are able to:

- keep a simple hip roof form and thus utilize standard G.N.W.T. roofing construction
- provide a distinctive interior space which will provide a sense of delight
- provide a strong sense of place
- create a high space, yet cozy and without significant volume.
- bring south light into the building

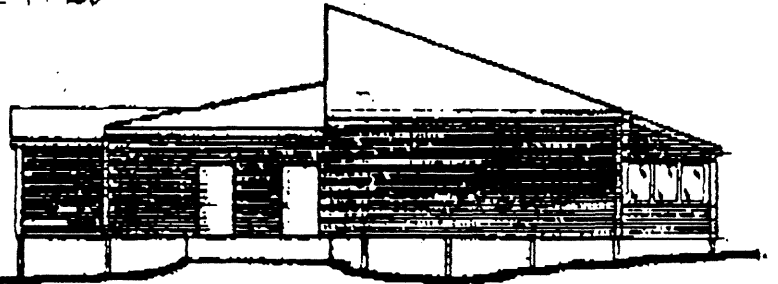
### The Reading Bay

To create a cozy reading space which will provide a comfortable space for the elders and others to gather to listen to stories, look at old photos, or just curl-up and read we have created a bay window looking to the view to Bylot Island.



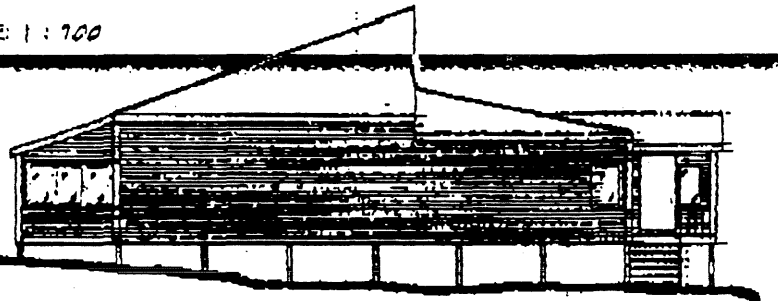
SOUTH ELEVATION

SCALE: 1 : 100



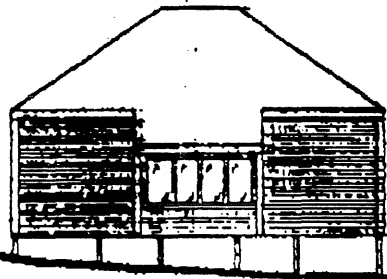
EAST ELEVATION

SCALE: 1 : 100



WEST ELEVATION

SCALE: 1 : 100



NORTH ELEVATION

SCALE: 1 : 100

# Cost Estimates

**General** The following Table outlines the Class "C" cost estimates for this building.

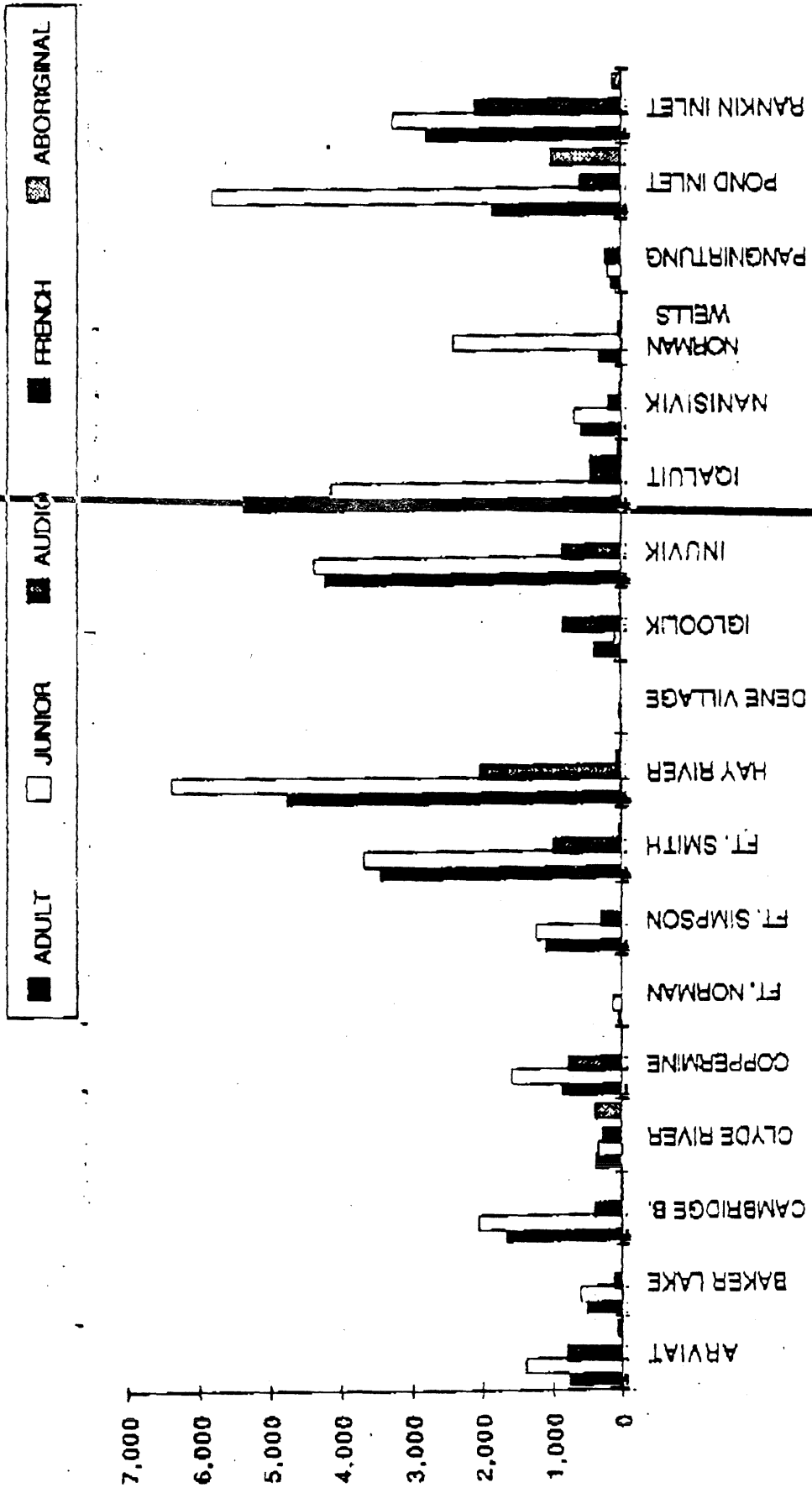
## Class "C" Cost Estimates

Project: Library  
 Location: Pond Inlet, N.W.T.  
 Date of Estimate: 23-Feb-92  
 Date of Tender: 30-Apr-92

Building Area 150 M2

Basis of Estimate:	New Construction	
	\$ / Sq. M.	Total
Discussions with Local Contractors on 1991 construction and review of cost per square meter for past tenders	\$2,859	\$443,850
<b>Adjustments</b>		
Inflation(4%)	\$118	\$17,754
1992 Bidding Environment (-10%)	(\$286)	(\$44,385)
<b>Total Construction Costs</b>	<b>\$2,791</b>	<b>\$417,219</b>
Contingency (10%)	\$278	\$41,722
<b>Total Construction Cost (including Contingency)</b>	<b>\$3,080</b>	<b>\$458,941</b>

1990 NWT PUBLIC LIBRARIES : CIRCULATION BY TYPE OF MATERIAL



COMMUNITY	POPULATION	TOTAL CIRC.	AVERAGE / MONTH	CIRC / CAPITA	NUMBER OF PROGRAMS	PROGRAM ATTENDANCE	AVERAGE #PROGRAM	REQUESTS / 100 POP.	REQUESTS	% OF ALL REQUESTS	NOTES
ARVIAT	1,255	3,060	255	2.44	68	811	11.90	73	5.80	2.00	10 mo. only
BAKER LAKE	1,049	1,281	108	1.23	8	493	61.60	47	4.50	1.00	
CAMBRIDGE B.	1,027	4,176	348	4.07	73	1,331	18.23	255	24.80	8.00	
CLYDER	474	1,437	120	3.03	32	624	19.50	6	1.30	0.10	11 mo. only
COPPERMINE	956	3,273	273	3.42	6	76	12.60	38	10.30	3.00	
FT. NORMAN	380	227	19	0.63	0	0	0.00	3	0.80	0.08	7 mo. only
FT. SIMPSON	1,008	2,683	224	2.67	33	625	18.90	128	12.00	4.00	
FT. SMITH	2,505	8,184	682	3.27	30	1,178	39.20	485	19.00	15.08	
HAY RIVER	2,827	13,287	1,107	4.70	67	3,134	46.70	382	13.50	11.89	
DENE VILLAGE	181	39	3	0.22	3	29	9.60	0	0.00	0.00	1 mo. only
KILOOLIK	922	1,413	118	1.53	8	594	74.20	4	0.43	0.12	
INUUVIK	2,670	9,455	788	3.54	19	761	40.00	270	10.10	8.40	
IOALUIT	3,038	11,010	918	3.62	86	1,730	20.10	317	10.40	9.80	
NANISIVIK	317	1,574	131	4.97	4	68	17.00	32	10.00	0.99	
NORMAN WELLS	536	2,835	236	5.29	28	671	23.90	50	9.30	1.50	
PANGNITUNG	1,070	643	54	0.60	16	663	41.40	5	0.48	0.15	
<del>POWELL BLVD</del>	<del>1,118</del>	<del>1,441</del>	<del>777</del>	<del>11.59</del>	<del>48</del>	<del>1,824</del>	<del>38.00</del>	<del>11</del>	<del>10.20</del>	<del>2.80</del>	
RANKIN INLET	1,424	8,365	697	5.87	58	1,819	31.30	56	3.90	1.70	
YELLOWKNIFE	19,011	95,130	7,928	7.31	62	2,907	46.80	910	6.90	28.30	
TOTAL OR AVERAGE	35,514	177,425	14,785	5.00	649	19,338	29.80	3,212	9.04		
1989 VALUES	35,086	147,038	12,253	4.19	852	17,389	20.41	2,388	6.80		
% CHANGE	1%	17%	17%	16%	-31%	18%	32%	28%	25%		

MAR 03 1992

Takijualuk School  
Pond Inlet, N.W.T.  
XOA OSO  
March 2, 1992

The Honourable Titus Allooloo, MLA  
Minister of Culture and Communications  
Government of the N.W.T.

Re: New Library for Pond Inlet

We're sure that you are aware that a great number of people were very pleased when they heard that a new library building would be built after the 1992 seal-lift. Increasingly, the community library has emerged in the public mind as a very important service. Obviously, when we heard recently that they were not going ahead with the project, we were quite upset, especially since a lot of money has gone into a feasibility study and architectural fees.

Presently, the community library is in a classroom in the portable school. It may be necessary to use the classroom for student use as early as next school year, 1992-1993, since our school enrollment is continuing to rise. If that were to happen, the community library would have no space in which to operate. This would be very unfortunate.

Even if the future plan was to have space for the community library in the new high school, there would be many disadvantages such as:

1. There would be a few years that the community library would have no space in which to operate.
2. The new high school would most likely be built at the outer limit of town making it quite inconvenient for community use, especially during the winter.
3. It may increase the capital expenditure for the new high school if the community library were to be a part of it.
4. Money that was already spent on the project would be lost.

It would certainly be in the best interests of Pond Inlet to have the new library building go ahead as originally scheduled. I hope you are able to bring to people's attention the importance of having new library materials arrive for seal-lift 1992. Good luck!

Yours truly,



David Parks  
Principal

CATHOLIC MISSION

Pond Inlet, N.W.T. XOA OSO

March 4, 1992

The Hon. Titus Allooloo, MLA  
Minister of Culture and Communications  
Government of the NWT  
P.O. Box 1320  
Tellowknife, N.W.T.  
X1A 2L9

Dear Titus,

Having just heard that the Financial Board of the Legislative Assembly of the N.W.T. has deferred funding that was already allocated to build the new community library in Pond Inlet, I would like to join my voice to those who are asking the Financial Board to reconsider its decision and allow the Library Board to continue its good work for the benefit of the whole community of Pond Inlet.

Yours sincerely,

Cuy Mary-Bussell, M.M.I.



MAR 04 1992

Rebecca P. Idlout Library Board  
Bag 212  
Pond Inlet, NT  
XNA 0S0

March 4, 1992

The Hon. John Pollard, M.L.A.  
Minister of Finance  
Government of the NWT  
P.O. Box 1320  
Yellowknife, NWT  
X1A 2L9

Dear Mr. Pollard;

This morning CBC News reported that funding for community high schools has been "put on hold" until the Department of Education presents its plan for high schools to the community. It was also reported that funds for a survey to determine what residents of Pond Inlet want in a high school have also been delayed. Our community believes that the construction of the new high school in Pond Inlet will be further delayed as a result of these decisions.

The Library Board believes that it is very important that Pond Inlet residents have the continued service of a community library and not have to wait until the new high school is constructed. We believe that the new library building should be constructed as originally planned.

Sincerely,



Sandi Purdell Lewis  
Pond Inlet Library Board

cc. Mr. John Todd, MLA  
The Hon. Titus Alloooc, Minister of Culture and Communications

FACSIMILE TRANSMISSION

REBECCA PANIKPAK  
IDLOUT LIBRARY  
POND INLET, N.W.T. X0A 050

Tel: (819) 899 8972

Date: March 4 92

TO:

The Hon. Titus Alloo  
Minister of Culture and Communications  
P.O. Box 1320 YELLOWKNIFE  
NT X1A 219

Fax number: (403) 873 0111

Contact number: (403) 873 7128

SENDER:

Library Board  
Rebecca P. Idlout Library  
P.O. Bag 212  
Pond Inlet, NT X0A 050

Total number of pages: 2

COMMENTS: Letter attached Thank you for your attention  
to this project

2 March 1992

Titus Allooloo, MLA  
Minister of Culture and Communications  
Government of the Northwest Territories  
P.O. Box 1320  
Yellowknife, N.T. X1A 2L9  
FAX (403) 873-0110

REBECCA IDLOUT LIBRARY

Dear Mr. Allooloo:

I am writing you today to express my concern over the recent decision of the Financial Management Board to defer funding for new community library in Pond Inlet. My understanding is that the library, which has already been designed, will now be incorporated into the new high school planned for construction in Pond Inlet in 1994.

As you are aware, through your own support and the hard work of dedicated volunteers, the library project in Pond Inlet has come considerable distance over the last few years as more and more residents take advantage of its offerings. The library is seen as an inviting place to relax and enjoy the simple pleasure of reading. It is my opinion that part of the library's success may be attributed to the fact that many residents of Pond Inlet see the library as a separate entity, open to the public and not part of the school system. I feel that by placing the library within the new high school may only serve to create the perception that the library as no longer a 'community' resource and therefore inhibit community participation and use.

I am aware of the current spending restraints by government and realise the difficulties involved in deciding where to trim budgets. However, I feel that education and literacy are fundamental requirements in the north's social and economic development and thus, should be treated as priorities in spite of fiscal restraint. It is important that government recognise that the north's most important resource, with the greatest development potential, is its people.

I hope in the days to come that you will give some thought to what I have said and perhaps convince others in the Legislature of the importance of this project. Thank you.

Sincerely,



Michael Bloor, resident of  
Pond Inlet.

General Delivery

POND INLET, NT  
X0A 0S0

March 4, 1992

The Hon. Titus Allooloo, MLA  
Minister of Culture and Communications  
Government of the NWT  
P.O. Box 1320  
Yellowknife, NWT  
X1A 2L9

Fax: (403)873-0110

Dear Titus:

The Rebec P. Idlout Library in Pond Inlet is a very important part of this community. Aside from the regular activities of the classes from Ulayuk and Takijualak schools using the library throughout the week, Wednesday afternoon Preschool storyhour and public library hours on Tuesday and Thursday evenings and Saturday afternoons, our Librarian and library board arrange for special events like slide shows of old photos and storytelling by elders to promote the community's cultural heritage.

Pond Inlet has no museum or visitor's center. Please at least let us have a new library where Pond Inlet residents can preserve their heritage through books, pictures and tapes.

The present library is cramped in a portable classroom and we deserve a larger building for such an important resource.

Thank you for supporting the library.

Marian Ferguson  
Library Supporter

**REBECCA P. IDLOUT LIBRARY  
POND INLET**

The Rebecca P. Idlout Library is a school-community library, serving the school population (under teacher supervision) during school hours. (This arrangement is ending when the new Library is built.) The Library enjoys, and the Librarian is kept busy by, a high circulation of books, audio-cassette and videos, and an increasing number of requests. The Library is continuing to create a niche for itself in the community, and is meeting the needs of an increasing number of people each year.

**Special Program Highlights**

1. **Puppet show and stories** -- presented by grade 11 students and sponsored by READ CANADA; over 70 children in attendance
2. **Peter Gzowski Invitational Golf Tournament for Literacy** -- The Library held readings for children sponsored by READ CANADA, had an Open House with readings by Peter Gzowski and Colin James, and premiered the videos "We Are Not Traditional Any More" and "Les Manieres des Blancs". A member of the Library Board captured the distinction of being the golfer with the highest score!
3. **North Baffin Drawings Exhibition** -- Cynthia Cook of the Art Gallery of Ontario set up a display of 20 drawings and presented a slide show of Inuit art.
4. **Book Week** -- a book/bake sale, radio quiz, birthday party for the Library during Pre-school Hour, Children's Night, Teen Night and an Open House for adults.
5. **Slide Show** -- Pond Inlet in the late 1960's - early 1970's; slides donated to the Library by Jan Sweitlik, a former Pond Inlet teacher.
6. **Pre-school Hour** -- weekly; stories and crafts for pre-schoolers and their parents.

**Other News**

1. **New Library Building** -- The Library received the Feasibility Study Report from Cornerstone Consultants; a site for the new building was chosen and approved.
2. **Donations and Grants** -- The Library received a grants of \$500 to purchase books about peace and the environment for the Canadian Institute for International Peace and Security. Donations of books, photographs and slides were gratefully received from past and present Pond Inlet residents, and visitors.

Plans for 1992 centre on preparing for the move into the new Library building which should be ready for occupancy early in 1993; augmenting the Library's collection of materials, and working to make the Library a vital part of the community.

bandi turner-Lewis  
Library Board

Posted: Thu Mar 5, 1992 3:24 PM EST      Msg: WNGA-1966-7000  
From: MIKE.FERGUSON/REN.RES/IQALUIT/N.W.T./GOVERNMENT.NWT  
TO: TITUS ALLOOLOO(FAX:4038730110)  
Subject: POND INLET LIBRARY

General Delivery  
POND INLET, NT  
X0A 0S0

March 4, 1992

The Hon. Titus Allooloo, MLA  
Minister of Culture and Communications  
Government of the NWT  
P.O. Box 1320  
Yellowknife, NWT  
X1A 2L9

Fax: (403)873-0110

Dear Mr. Allooloo:

I am six years old and I go to the library in Pond Inlet almost every Saturday.

I think Pond Inlet needs a bigger library because sometimes there are too many kids there and there are lots of books.

I wanted to sign the Pond Inlet petition, but the grown-ups said I was too small.

Matthew Ferguson

(Dictated by Matthew, typed by his father.)

General Delivery

POND INLET, NT  
X0A 0S0

March 4, 1992

The Hon. Titus Allooloo, MLA  
Minister of Culture and Communications  
Government of the NWT  
P.O. Box 1320  
Yellowknife, NWT  
X1A 2L9

Fax: (403)873-0110

Dear Mr. Allooloo:

Please help keep the same library or have a new one built. I like the things they have at the library and the things you can do.

I am eight years old and go to the library on Saturdays, and with my class during the week.

I wanted to sign the Pond Inlet library petition, but Phillippa said I was too young.

Adam Ferguson

(Dictated by Adam, typed by his father.)

General Delivery

POND INLET, NT  
X0A 0S0

March 4, 1992

The Hon. Titus Allooloo, MLA  
Minister of Culture and Communications  
Government of the NWT  
P.O. Box 1320  
Yellowknife, NWT  
X1A 2L9

Fax: (403)873-0110

Dear Titus:

I am aware that the new library may be cancelled. I will strongly disagree if that happens.

The library is a community resource. This is obvious with the many children which use the library on Saturdays, and the many community events centered in the library (e.g., readings by the elders, art and old photograph displays, slide presentations by visitors, the Literacy Canada evnets).

Located on school property as it now is, it will always be threatened with re-allocation for other purposes as the student population grows. You are well aware of the fate which fell on Kasarnak Daycare when the school needed another classroom.

As well, children will not want to go to "school" six days a week. If located within the main school, that is how children will view the public library.

I have been told that the Pond Inlet public library had the highest book-lending rate per capita in the NWT.

The library is an public resource of obvious value to children, adults and elders living in Pond Inlet. Such a resource can help shape the future leaders of Baffin Region and Nunavut.

Please do your best to assure that an independent public library is built in Pond Inlet in fall 1992. The community has already proven that it will make good use of it.

Michael Ferguson