

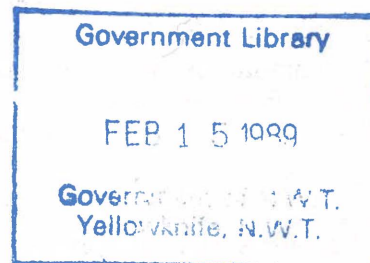
Suicides. by Community NWT 1978 - 1988



<u>Nunavut</u>	<u>Total Suicides</u>	<u>Year</u>										
		<u>78</u>	<u>79</u>	<u>80</u>	<u>81</u>	<u>82</u>	<u>83</u>	<u>84</u>	<u>85</u>	<u>86</u>	<u>87</u>	<u>88</u>
Iqaluit	18	5	1	2	1	1		2	1	2	1	2
Arctic Bay	3				1					1	1	
Broughton Island	8							1		2	3	2
Cape Dorset	6				3				1	1	1	
Clyde River	4								1		2	1
Hall Beach	3					1		1				1
Igloolik	2					1						1
Lake Harbour	1											1
Pangnirtung	5	1								1	1	2
Pond Inlet	3				1		1					1
Resolute Bay	2	1	1									
Rankin Inlet	7	3					1	1	1		1	
Baker lake	5	1		1					1		1	1
Chesterfield Inlet	1									1		
Coral Harbour	1			1								
Eskimo Point	1											1
Repulse Bay	2						1		1			
Whale Cove	2						1			1		
Cambridge Bay	5		2	1					1	1		
Coppermine	6	1						2	1	1	1	
Gjoa Haven	1	1										
Holman Island	1			1								
Pelly Bay	2								1	1		
Spence Bay	1	1										
Aklavik	2											2
Paulatuk	1						1					
Tuktoyaktuk	6						5	1				
Total	99											

Percent of Total Suicides in NWT **58%**

Percent of NWT Population in Nunavut (1986) **43%**



Note:

Nunavut communities with no suicides reported between 1978 - 1988 were Bathurst Inlet, Bay Chimo, Grise Fiord, Sanikiluaq, Nanisivik, and Sachs Harbour.

Data Sources

1. Chief Coroner's Office, Department of Justice, GNWT.
2. Department of Health, GNWT,

Suicides, by Community NWT 1978 - 1988

<u>Denendeh</u>	<u>Total Suicides</u>	<u>Year</u>										
		<u>78</u>	<u>79</u>	<u>80</u>	<u>81</u>	<u>82</u>	<u>83</u>	<u>84</u>	<u>85</u>	<u>86</u>	<u>87</u>	<u>88</u>
Inuvik	6						3		1	1	1	
Fort Franklin	1		1									
Fort Good Hope	2	1					1					
Fort Mcpherson	3					2	1					
Norman Wells	2						1					1
Fort Smith	2				1		1					
Rae/Edzo	2	1						1				
Fort Liard	1										1	
Fort Resolution	6							1	2	1	1	1
Fort Simpson	2				1			1				
Jean Marie River	1								1			
Lac La Marte	1							1				
Pine Point	3	2		1								
Yellowknife	23	7	3	3	1		3		1	2	2	1
Lupin	1											1
Hay River	13	2	1	1	2		1	1		2	3	
Nahanni Butte	1										1	
Peal River	1								1			
Muskeg River	1								1			
Cadillac Mines	1					1						
Total	73											

Percent of Total Suicides in NWT 42%

Percent of NWT Population in Denendeh 57%

Note:

Denendeh communities with no suicides reported between 1978 - 1988 were Arctic Red River, Colville Lake, Fort Norman, Trout Lake, Snare Lake, Ray Lakes, Wrigley, Ft. Providence, Detah, Snowdrift, Kakisa, Paradise Gardens, and Enterprise.

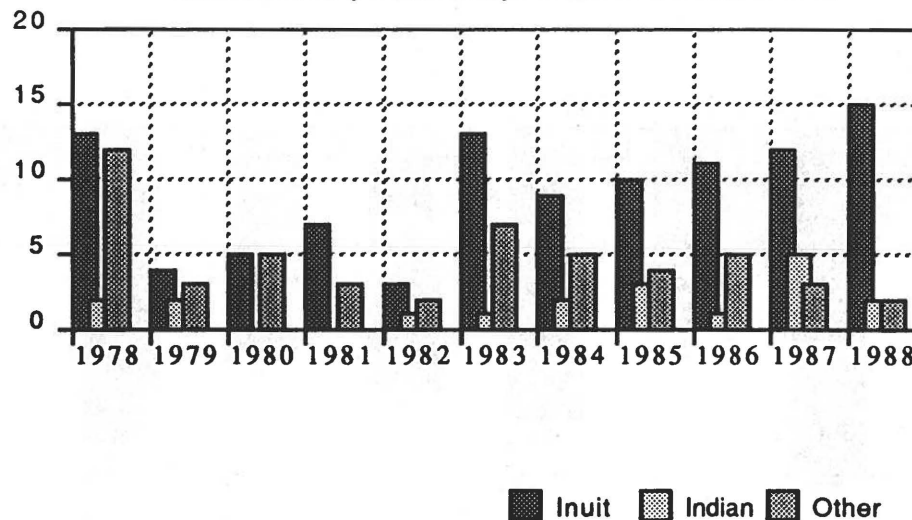
Data Sources

1. Chief Coroner's Office, Department of Justice, GNWT.
2. Department of Health, GNWT,

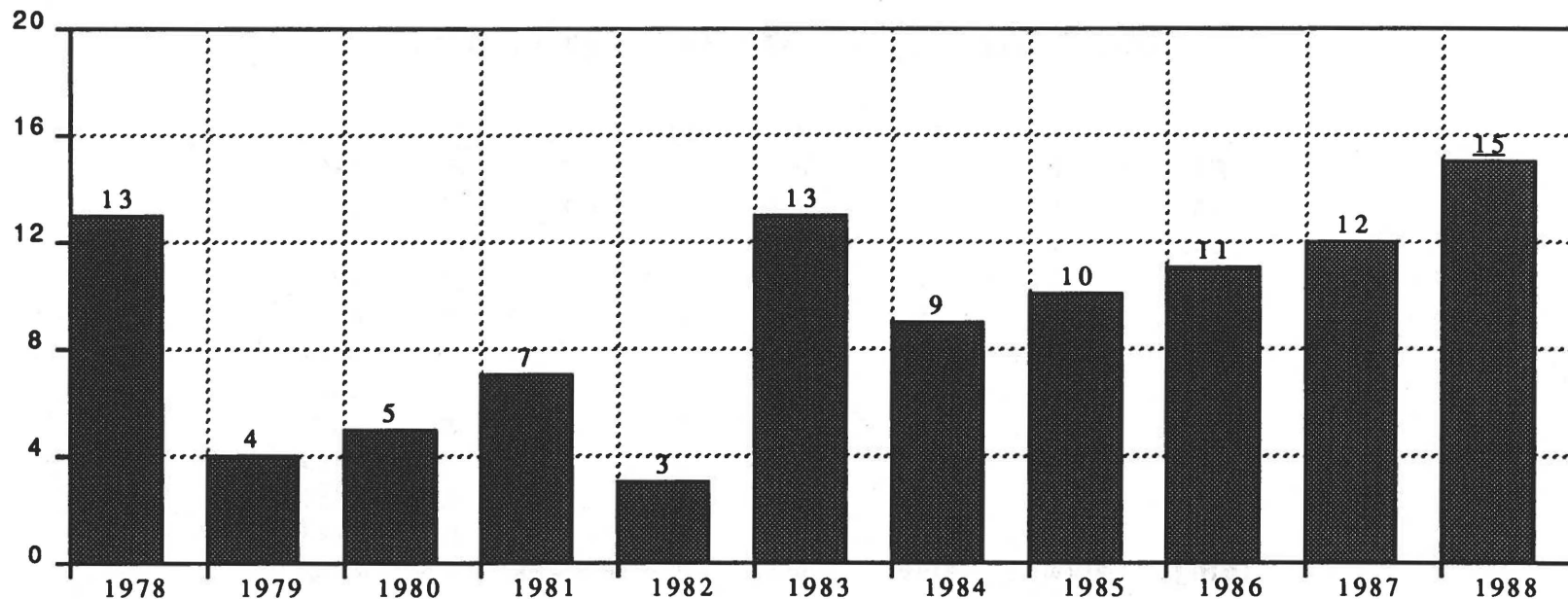
Suicides, by Ethnicity NWT 1978 - 1988

Year	Inuit	Indian	Other	Total
1978	13	2	12	27
1979	4	2	3	9
1980	5	0	5	10
1981	7	0	3	10
1982	3	1	2	6
1983	13	1	7	21
1984	9	2	5	16
1985	10	3	4	17
1986	11	1	5	17
1987	12	5	3	20
1988	15	2	2	19
Total	102	19	51	172
Percent	59.3%	11%	29.7%	100%

Suicides, by Ethnicity NWT 1978 - 1988



Inuit Suicides, NWT 1978 - 1988



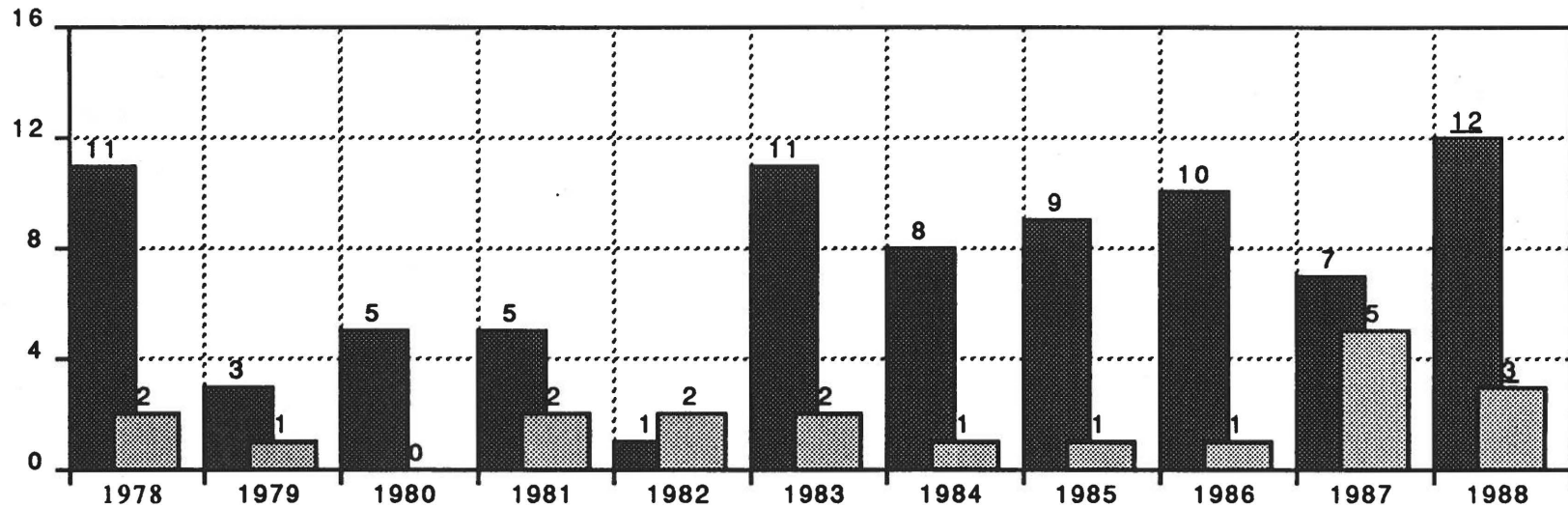
Data Sources:

1. Chief Coroner's Office, Department of Justice, GNWT, Yellowknife.
2. Department of Health, GNWT, Yellowknife.

Suicides, by Sex and Ethnicity NWT 1978 - 1988

Year	<u>Inuit</u>		<u>Indian</u>		<u>Other</u>		Total
	Male	Female	Male	Female	Male	Female	
1978	11	2	1	1	9	3	27
1979	3	1	2	0	3	0	9
1980	5	0	0	0	5	0	10
1981	5	2	0	0	2	1	10
1982	1	2	1	0	1	1	6
1983	11	2	1	0	7	0	21
1984	8	1	2	0	4	1	16
1985	9	1	3	0	4	0	17
1986	10	1	1	0	4	1	17
1987	7	5	5	0	2	1	20
1988	<u>12</u>	<u>3</u>	<u>2</u>	<u>0</u>	<u>1</u>	<u>1</u>	<u>19</u>
Total	82	20	18	1	42	9	172

Inuit Suicides, by Sex NWT 1978 - 1988



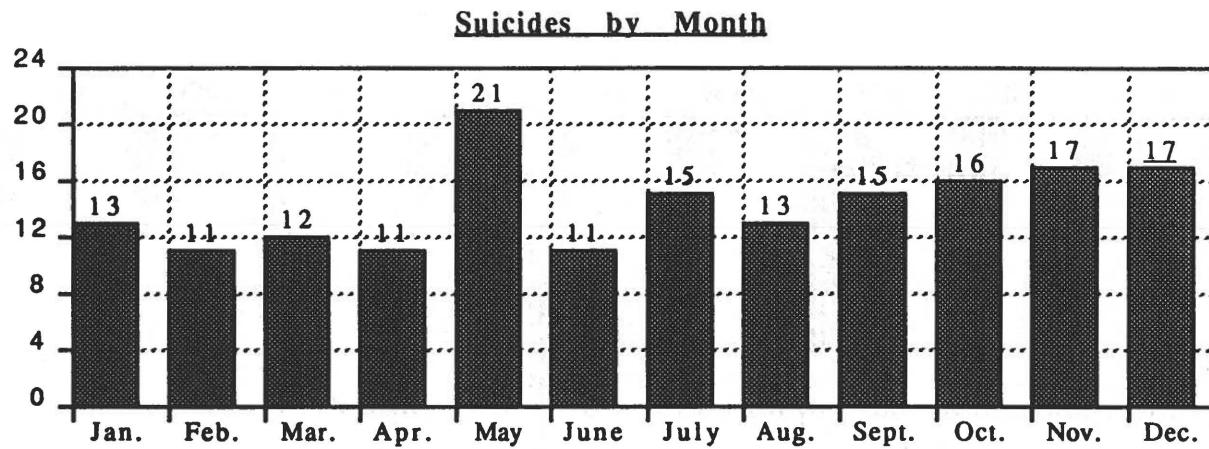
Data Sources:

1. Chief Coroner's Office, Department of Justice, GNWT, Yellowknife.
2. Department of Health, GNWT, Yellowknife.

■ Male ▨ Female

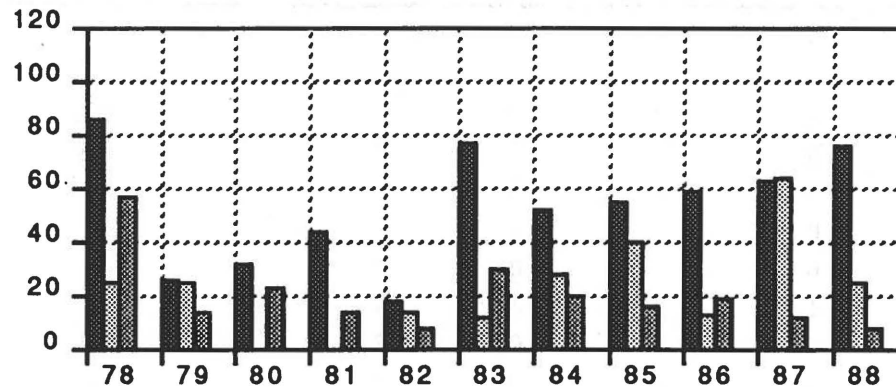
Number of Suicides per Month NWT 1978-1988

Month	Suicides
Jan.	13
Feb.	11
Mar.	12
Apr.	11
May	21
June	11
July	15
Aug.	13
Sept.	15
Oct.	16
Nov.	17
Dec.	17
Total	172



Rate of Suicide per 100,000 persons, by Ethnicity NWT 1978 -1988

Year	Inuit	Indian	Other
78	85.7	25.1	57.1
79	25.8	24.6	14.1
80	31.9	0	22.8
81	44.3	0	14
82	18.4	13.9	8.4
83	76.8	11.6	29.5
84	51.5	27.7	20.1
85	55.4	40.4	15.6
86	59.3	13.3	19
87	63.1	63.9	12
88	75.9	25	7.8
Average	53.4	22.3	20



Inuit
 Indian
 Other

Note: The Canadian rate of suicide per 100,000 persons has averaged approximately 14.0/100,000 over the past ten years.

Suicides, by Age NWT 1980 - 1988

Year	Under 15	15-24	25-34	35-44	45-54	55-64	65 +
1978	1	16	4	2	1	3	0
1979	1	3	3	1	1	0	0
1980	0	4	3	0	2	1	0
1981	0	10	0	0	0	0	0
1982	0	2	3	1	0	0	0
1983	0	13	6	2	0	0	0
1984	0	8	4	1	2	0	1
1985	1	8	6	1	0	1	0
1986	0	9	1	3	3	1	0
1987	3	14	2	0	0	1	0
1988	2	11	5	1	0	0	0
Total	8	98	37	12	9	7	1

