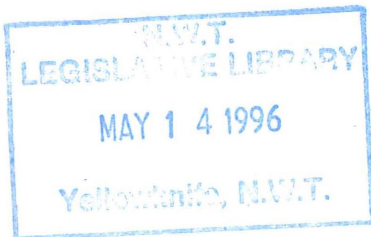


NWT GOVERNMENT LIBRARY



3 1936 00030 443 4

BENEFITS OF SUPPORTING THE TL'OONDIH



I am so grateful for coming here and doing the work I did. It's amazing and unexplainable. Healing is such a great gift I can only give myself.

--Margaret

BENEFITS OF SUPPORTING THE TL'OONDIH HEALING PROGRAM AT THE LEADERSHIP LEVEL

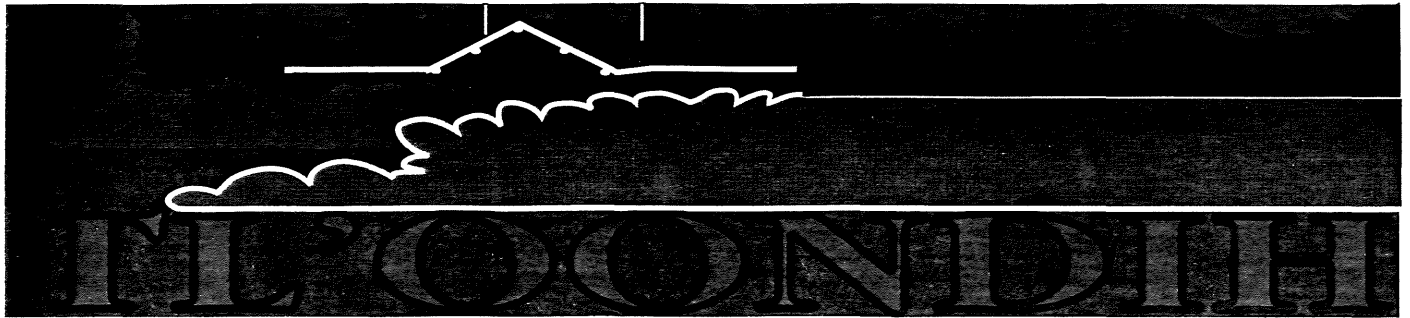
Pledged over 5 years:

- The Corporation's name inscribed in perpetuity on the main lodge at the Tl'oondih Camp.
- A uniquely designed memento by a Gwich'in artist will be presented to the Corporation by a member of the Gwich'in Tribal Council and the artist.
- An opportunity to use Camp Tl'oondih for a Corporate meeting, seminar, etc. when the camp is not in use for the program (no alcoholic beverages will be allowed).
- An opportunity to reserve space at the Klondike River Lodge at a special Tl'oondih Supporter Rate. The Lodge is located at Mile 0 of the Dempster Highway. The Lodge which has been in operation for over 20 years has been purchased by the Gwich'in Development Corporation. The facility has had major upgrading, renovations and additions.

Media Benefits:

- News release announcing the gift to the Gwich'in Tribal Council Healing Program.
- An opportunity for a representative from the Corporation to visit the camp personally and present the cheque to the Chairman of the Tl'oondih Healing Program.
- Recognition in the Gwich'in publications including the newsletters, annual reports, etc.

The Tl'oondih Healing Program



THE TL'OONDIH HEALING PROGRAM

NEW BEGINNINGS

I had quite the experience here. I can see more clearly now. I know I have a long way to go - I think what I'm trying to say is that it's been like someone ripped out my eyes and heart and cleaned the garbage off them and gave me back my soul and identity.

--Bill
Tl'oondih Camp
July 1995

MISSION STATEMENT:

"To encourage and support people to initiate and continue the healing process that will enable them to take control of their own lives."

The Tl'oondih Healing Program

TABLE OF CONTENTS

SYNOPSIS	1 - 2
WHO ARE THE GWICH'IN	3
TL'OONDIH HEALING SOCIETY	4
TL'OONDIH HEALING CAMP	5 - 8
ADDITIONAL PROJECTS TO BE FUNDED	
Adult Training Program	9
Adult After Care Program	10
Youth Program	11
Children's Program	12
CAPITAL CAMPAIGN BUDGET	13
OPERATING CAMPAIGN BUDGET	14 -15
APPENDICES	
I Tl'oondih Healing Program Professional Staff	
II History of the Gwich'in Tribal Council	
III Investment in the Future	
IV Gwich'in Tribal Council Organizational Chart	
V Gwich'in Development Corporation Organizational Chart	
VI Tl'oondih Song Composed by Camp Participants	

I'd recommend this healing camp to everybody. I'm glad I came here. Maybe my kids will have a better chance at life now.

--Brian

SYNOPSIS

The Tl'oondih Healing Program and the Tl'oondih Healing Camp is a first in North America. This program is unique in that it focuses on the family as a unit rather than on the individual and is the first time an **Aboriginal Organization** has taken an independent approach to building a facility and developing their own healing program.

The 1992 Gwich'in Tribal Council Agreement with Canada entitled the "Gwich'in Land Claim Settlement Act" was the catalyst for the founding of Tl'oondih. It is a modern day treaty and once it became law the Gwich'in began receiving benefits pursuant to the agreement.

The Gwich'in felt their first priority was to begin "investing in their people" and provide them with a place to begin the "healing process" closer to home and "on the land". Thus the Tl'oondih Healing Program was born.

Many Aboriginal families and homes over the last decades had become battle grounds as a result of alcohol and drug abuse, leading to violence, sexual abuse, child abandonment and abuse and suicide among the youth. Every family in a community was somehow touched by this cruel cycle.

The practice of sending one member of a family out of the community for either short term treatment in Edmonton or incarceration for violence wasn't working. Once the individual returned to their home community they would relapse quickly into their old ways and the family as a whole did not change.

Using the Alaskan Gwich'in's "Spirit Camps" as a model, the Northwest Territory Gwich'in borrowed money against their Land Claim Settlement and built the Healing Camp Tl'oondih. It is located 28 kilometers south of Fort McPherson on the east shore of the Peel River in the foothills of the Richardson Mountains. Fort McPherson is the headquarters of the Gwich'in Tribal Council.

The camp at Tl'oondih can accommodate approximately 36 people or 4 to 5 families. The six week stay at Tl'oondih is just the beginning of the Tl'oondih Healing Program; there is a 22 month After Care Program in which camp attendees must agree to participate before they are initially accepted into the Program.

I am grateful and honoured to have been one of the first clients of the Tl'oondih Healing Camp. Best wishes to the rest of the clients. I am thankful to all the staff for being there. I also pray for all the people who will never get a chance to come to Tl'oondih, and I pray for the other people that will come to Tl'oondih that they have the strength and courage to make it through the door.

—Frank

SYNOPSIS CONT'D

A team of committed professionals has been assembled to administer the program and to participate in the training program for Gwich'in counsellors who will eventually administer the Healing Program themselves. (See Appendices for list of Professional Staff.)

The outcome of this "investment in people" is two-fold. First, the Gwich'in will develop a stronger base for leadership as they move towards self-government. Second, those individuals who must move out of the local communities to sustain themselves will have the strength and self worth to face new challenges.

It should be noted that word of the success of the Tl'oondih Healing Program has spread quickly. There are inquiries for information about the program from across North America.

Approximately 50% of the people who have attended the Camp Program to date have not been Gwich'in. It is felt by the Tl'oondih Healing Society everyone in their community who is prepared to change their lifestyle should be accepted into the program.

It is expected the Tl'oondih Healing Program will serve as a model for other communities. The administration of the present program will assist others to develop their own Healing Program.

WHO ARE THE GWICH'IN?

The Gwich'in ("People") are the northern most Amerindians in North America whose traditional homeland encompasses northeastern Alaska, the northern Yukon and the Mackenzie Delta region of the Northwest Territories.

They were traditionally hunters and gatherers and have successfully survived as an extended family unit on this land for over 30,000 years in one of the most hostile environments on earth.

The Gwich'in in the Northwest Territories (N.W.T.) live in the communities of Aklavik, Inuvik, Fort McPherson and Tsiigehtchic (formerly Arctic Red River). These N.W.T. communities are in the vicinity of the 700 kilometer long Dempster Highway commencing just south of Dawson City and ending at Inuvik.

The Gwich'in are a colourful people who, over the last 100 years, have proven their ability to be aggressive, progressive and innovative. Their leadership style has been particularly innovative in the 1990's as they move towards self-government. Their prime concern: the well being of their people.

Tired of the endless negotiations underway in some form or another since 1921, the Gwich'in decided to go it alone and negotiate their own Agreement with the Government of Canada in the summer of 1991.

On December 22, 1992, the Gwich'in Land Claim Settlement Act which gave effect to the Gwich'in Agreement was given Royal Assent and became law. The Land Claim covers approximately 9,500 square miles of land. The Gwich'in began receiving benefits pursuant to the agreement. The financial agreement is \$75 million over 15 years with gradually increased payments.

(See Appendices for a history of the Gwich'in Tribal Council.)

TL'OONDIH HEALING SOCIETY

Since the 1960's great changes impacted, often negatively, the social and hereditary factors of the Gwich'in community. During the 1960's the traditional way of life (influenced by outside factors) changed with the men forsaking the nomadic life of hunting and fishing in search of new sources of income. In the 1970's the oil fields boomed. Following the lead of their parents, the young people (attracted by lucrative wages) began to drop out of school. In the 1980's the economic boom dissipated, leaving the region with one of the highest rates of unemployment in Canada.

In the 1990's there is no turning back, for the Gwich'in must now seek out alternative options to ensure their economic well being.

As the traditional community lifestyle dissipated, so did the ambitions of the people. Within many families social disharmony became the norm with alcohol and drug abuse, sexual abuse, violence, gambling, child abuse and abandonment and most terrifying of all - rampant suicide among the youth.

Change was needed and the Tl'oondih Healing Society was formed. A Committee was established in August of 1994 and given the mandate to develop, implement and administer the Healing Program. They took it upon themselves to secure a loan to construct the camp, implement and administer the program.

In November of 1994, the Committee offered Doug Smith the position of Executive Director of the Healing Program. He began to develop the program and assemble the Tl'oondih administrative team. (See Appendix ... I for biographies.)

A number of individuals from local communities were recruited to become part of the Tl'oondih Team. They have begun an intensive training program that will enable them to take over the administration of the program in a few years.

The Tl'oondih Healing Society is a registered charitable organization.

*I hope a lot more people can
come here and go through
this program not only from
our community but as well
from our surrounding
communities.*

--Agnes



TL'OODIHI HEALING CAMP

This is the first time in Canada that an aboriginal organization has taken an independent approach to the healing process by constructing their own facility and developing a program using their own resources. This is the first facility in Canada designed to take in families.

The Tl'oondih Philosophy:

Addiction and destructive behaviour develop and emerge as a result of the loss of traditional values and customs and are manifestations of a deeper spiritual crisis within an individual, a family, and a community and/or cultural system from which the individual comes.

We will do our best to encourage and support individuals, families and the community to initiate and continue the healing process; spiritually, emotionally, physically and mentally in the natural surroundings of the land.

Tl'oondih ("Grassy Hill" in Gwich'in) is located approximately 28 kilometers south of Fort McPherson on the east bank of the Peel River in the foothills of the Richardson Mountains.

The camp consists of a 2,000 square foot lodge, a kitchen facility and nine (9) staff and client cabins.

The Healing Camp was established because the Gwich'in felt it was important to initiate the healing process in a setting that would enable the family to begin the healing process.

The camp is not a formal "treatment centre". It is a place where families and neighbours begin to heal together.

Well to start off I'd like to say that this healing camp really does work and I'm glad I came here. It's better than any other treatment centre and that's for sure.

--Agnes

The Tl'oondih Healing Program - 5

TL'OONDIH HEALING CAMP CONT'D

The first program was held in April of 1995. It is anticipated that at least seven 35 day programs will be held each year.

It is believed this healing process will enable families to become more independent, weaning them from a system which has kept them dependent for a long, long time.

The children of the families who participate in this process do much better in school and become less dependent on the social system.

The TI'oondih Program:

TI'oondih is a two (2) year program.

The first six (6) weeks takes place at the TI'oondih Camp with the first week set aside for orientation and the final week dedicated to Coping Skills.

This is followed by a 22 month After Care Program that may include such things as AA Meetings, Counselling Services, and Mini Programs, etc.

The program is a balance of holistic, traditional and modern therapeutic healing methods.

The TI'oondih Healing Program is open to any person who wishes to lead a clean and sober life and begin the healing process.

What I like about the healing program is there were no lectures and videos. All the work was done by the clients themselves. Finding out where their behaviour came from and confronting it.

—Mary Ruth

TL'OONDIH HEALING CAMP ADULT PROGRAM

*The Tl'oondih healing camp
has done a lot for me it
opened many doors. I dealt
with a topic that I never
wanted to even discuss. It
sure felt great to get it out. I
discovered I wasn't alone on
a lot of things now I feel that
I can talk about it without
feeling ashamed.*

--Donna

Adult Healing Program:

In the adult program the clients are encouraged and supported in the re-experience of all early childhood traumas so they may free the repressed emotions attached to their experiences and finally release any unresolved issues. A number of non-traditional methods such as music, art or breathwork are used to trigger these feelings. It is one of the only programs that deals directly with issues such as racial barriers or tensions, sexual abuse, violence, murder and suicide.

The program operates in 3 phases:

In **Phase 1** of the adult program we emotionally trigger the clients to remember their history, so they may approach and begin to heal the extreme historical traumas in their lives. In **phase 2** the clients look at the continuous cycle these experiences have created and confront the unhealthy behaviour patterns that have formed from their history. In **phase 3** they begin to practice and discover new and healthier methods of coping and expression in their world. At this time we begin to re-integrate families.

The parents are taught alternate parenting skills through communication workshops with their children. At Tl'oondih they attempt to deal with the core issues surrounding alcohol abuse and addictive behaviours.

We have chosen a much more intense and in-depth therapeutic approach, realizing we are dealing with a population that has experienced a much higher percentage per capita of suicide, rape, sexual abuse, and sometimes murder than that of most other populations in Canada.

All clients must continue to attend twice weekly group and individual therapy sessions for a minimum of one year.

In our first year we have begun to see dramatic lifestyle shifts in the families that have been to Tl'oondih. They are no longer caught in addictive and violent cycles and appear now to be healthy role models for other native communities in Canada.

**TL'OONDIH
HEALING
CAMP
YOUTH AND
ADOLESCENT
PROGRAM**

Youth and Adolescent Program:

The Youth and Adolescent Program at Tl'oondih is designed to help the children re-integrate into their family system (through communication workshops with their families and groups on their own) by learning more effective ways to understanding and expressing their emotions.

During their five week stay at Tl'oondih, the youth will be involved in various programs. **The initial stage** focuses on creating a safe and trusting environment within a group setting where the youth can begin to express their feelings. This stage allows for the youth to see that they're not alone with their emotions.

The second stage focuses on a series of activities enhancing communication between the group members who are then integrated into the family workshops. The youth participate in the creation of their own family systems on a mobil which helps them to understand how any issue can affect the whole family structure. At this stage in the program the youth develop an understanding of how one's behaviour can affect everyone around them.

The third and fourth stages of the program help the youth to express their individual needs within their family. Through one-on-one counselling and smaller group activities, youth are encouraged to explore their roles within their family and community.

The fifth and final stage of the program focuses on integrating the youth back into their homes as they explore some of the struggles they may likely face upon their return to their homes, and helps them to begin the separation process with their fellow group members.

Daily Structure of Activities:

9:00 - 9:15	Meditation	1:30 - 2:30	Recreation/Arts and Crafts etc.
9:15 - 10:15	Group/Education		
10:15 - 10:30	Break	2:30 - 3:00	Check-in
10:30 - 11:30	Therapeutic Program	3:00 - 3:15	Break
11:30 - 1:00	Lunch	3:15 - 4:15	Group
1:00 - 1:30	Family Activity	4:15 - 5:00	Journal Writing

**ADDITIONAL
PROJECTS
TO BE
FUNDED**

The workers there are very professional and understanding. There are also Gwich'in people training to be counsellors, also different races of people. I'm glad that we have these workers here. I'm not saying that I'm healed but I know for sure doors have been opened for me and I have the workers at Tl'oondih to thank for that.

--Mariah

Adult Training Program:

One of the aims of the Tl'oondih Healing Program is to provide training for people from the local communities so that they may take responsibility for the program in the future.

Eight individuals have been recruited and were involved immediately as part of the Tl'oondih Team along with the professional counsellors hired outside the community.

The Training Program consists of:

- A 4 week introductory session at Camp Tl'oondih
- On-site participation in the program at Camp Tl'oondih
- Participation in the After Care Community Program
- 6 week training programs at the Bellwood Institute, Scarborough, Ontario
- Completion of 8 courses at Bellwood Institute

Upon completion of the courses at Bellwood and on-the-job training programs both at Tl'oondih and the 18 month after care community program, participants will receive a Diploma in Addiction and Family Group Therapy.

**ADDITIONAL
PROJECTS
TO BE
FUNDED**

Adult After Care Program:

The 18 month After Care Program will take place in the home communities of the participants from the Tl'oondih Camp Program.

It is an essential part of the Tl'oondih Healing Program since participants must commit to this portion of the program before they participate in the six week family program at Tl'oondih.

The After Care Program sessions are held twice a week. One session is segregated between men and women and the other session integrates the sexes.

There are approximately two hundred people currently enrolled in the After Care Program.

Additional sessions and one-on-one counselling are also available to participants in the Tl'oondih Healing Program.

*I was told that I have
changed and was a strong
woman which made me feel
good about myself because I
never did feel good about
myself.*

--Donna

**ADDITIONAL
PROJECTS
TO BE
FUNDED**

Youth Program:

This program is intended to counsel and guide the youth who have participated in the five week program at the Tl'oondih Healing Camp with their families to:

- Encourage those who are in school to finish their secondary education and move on to post-secondary education leading to a professional career.
- Encourage school drop-outs to take literacy courses and realize their potential by either returning to school or enrolling in skills training programs.

Through peer support, the participants in the Youth Program explore and develop a healthy and positive approach to life rather than succumbing to the cycle of violence, destruction and abuse that was the norm before entering the program.

**ADDITIONAL
PROJECTS
TO BE
FUNDED**

Children's Program:

The children will be the first to benefit from the Tl'oondih Healing Program.

For the first time, many experience consistent love and nurturing from their parents and other adults when they attend Camp Tl'oondih as part of the family unit.

There are special programs designed for the children at Tl'oondih. They too must be taught to cast aside violence as a solution to conflict and adopt new and different coping skills.

Working with other community health workers and the school system, the Tl'oondih After Care Program will monitor the behaviour of children whose families attended the Camp Program.

When necessary the children will receive private counselling with or without their parents - whichever is most appropriate.

This co-ordinated community response will provide the children with a positive environment in which to grow.

*I now understand why I treat
my kids the way I do and I
know it's not my fault. I do it
because that's the way I was
brought up and that's the
only way I knew to be a
parent. I have the chance to
stop the alcoholism and the
abuses. This is the beginning
of my healing and I'm so glad
I came here because I didn't
know how much I was
hurting my kids.*

--Agnes

**CAPITAL
CAMPAIGN
BUDGET**

**GWICH'IN HEALING SOCIETY
CAPITAL EXPENDITURE REPORT
TL'OONDIH HEALING CAMP**

Surveying Costs	\$20,000.00
Land Clearing	\$45,000.00
Cost of Building Material	\$800,000.00
Labour	\$750,000.00
Furnishings	\$75,000.00
Boat	\$40,000.00
Electrical Equipment	\$100,000.00
Truck and Van	\$60,000.00
Other Equipment	\$50,000.00
Miscellaneous	\$60,000.00
Total	\$2,000,000.00

Gwich'in Healing Society Total Projected Operating Cost Allocation To Program

	Monthly	Program Administration	Program: Camp Adult	Program: Camp Children & Youth	Program: Counsellor Training	Aftercare Program: Adult	Aftercare Program: Youth	Aftercare Program: Children	Total Cost Annually
Salaries									
<i>Executive Director</i>			\$42,000	\$14,000	\$8,000	\$16,000			\$80,000
<i>Administration Officer</i>			\$25,200	\$6,300		\$4,500	\$4,500	\$4,500	\$45,000
<i>Assistant Administration Officer</i>			\$14,000	\$3,500		\$2,500	\$2,500	\$2,500	\$25,000
<i>Mental Health Worker</i>					\$18,750	\$18,750	\$18,750	\$18,750	\$75,000
Program									
<i>Program Director</i>			\$56,000	\$8,000	\$16,000				\$80,000
<i>Aftercare Director</i>					\$17,500	\$17,500	\$17,500	\$17,500	\$70,000
<i>Adult Counsellor Trainees</i>					\$240,000				\$240,000
Youth									
<i>Director</i>			\$45,000						\$45,000
<i>Assistant Director</i>				\$12,500			\$12,500		\$25,000
<i>Child Care Worker</i>								\$20,000	\$20,000
Maintenance			\$35,360	\$8,840					\$44,200
Kitchen/Dining			\$48,240	\$12,060					\$60,300
Total Salaries			\$265,800	\$65,200	\$300,250	\$59,250	\$55,750	\$63,250	\$809,500
Total Benefits			\$21,264	\$5,216	\$24,020	\$4,740	\$4,460	\$5,060	\$64,760
Food And Supplies	\$10,881		\$104,459	\$26,115					\$130,574
Utilities	\$1,593		\$15,296	\$3,824					\$19,120
Transportation	\$6,585		\$63,219	\$15,805					\$79,023
Travel	\$4,270				\$30,743	\$10,248	\$10,248		\$51,238
Camp Maintenance	\$5,560		\$53,378	\$13,344					\$66,722
Training					\$60,000				\$60,000
Capital Replacement			\$25,000						\$25,000
Miscellaneous			\$5,000						\$5,000
Subtotals			\$553,415	\$129,504	\$415,013	\$74,238	\$70,458	\$68,310	\$1,310,936

Gwich'in Healing Society Total Projected Operating Cost Allocation To Program

	Monthly	Program Administration	Program: Camp Adult	Program: Camp Children & Youth	Program: Counsellor Training	Aftercare Program: Adult	Aftercare Program: Youth	Aftercare Program: Children	Total Cost Annually
Office									
<i>Rental</i>		\$36,000	\$20,160	\$5,040		\$3,600	\$3,600	\$3,600	\$36,000
<i>Bank Charges</i>		\$5,000	\$2,800	\$700		\$500	\$500	\$500	\$5,000
<i>Telephone</i>		\$6,000	\$3,360	\$840		\$600	\$600	\$600	\$6,000
<i>Insurance</i>		\$20,000	\$11,200	\$2,800		\$2,000	\$2,000	\$2,000	\$20,000
<i>Professional Fees</i>		\$3,000	\$1,680	\$420		\$300	\$300	\$300	\$3,000
<i>Travel</i>		\$12,000	\$6,720	\$1,680		\$1,200	\$1,200	\$1,200	\$12,000
<i>Advertising</i>		\$1,000	\$560	\$140		\$100	\$100	\$100	\$1,000
<i>Office Supplies</i>		\$2,500	\$1,400	\$350		\$250	\$250	\$250	\$2,500
Total Office		\$85,500	\$47,880	\$11,970	\$0	\$8,550	\$8,550	\$8,550	\$85,500
Total Costs		\$85,500	\$601,295	\$141,474	\$415,013	\$82,788	\$79,008	\$76,860	\$1,396,436

Total Projected Revenue per Annum

Gwich'in Tribal Council	\$500,000
Brighter Futures	\$100,000
Contract's Gov't Northwest Territories	\$400,000
•Community Health Worker (Fort McPherson)	\$50,000
Private Sector Anticipated	\$450,000
Total	\$1,500,000

APPENDICES

THE TL'OONDIH PROFESSIONAL TEAM

Tl'oondih is being developed and implemented by the following professionals:

Executive Director - Doug Smith is a psychotherapist with extensive training in Psychodrama and Family Dynamics and has worked in this field for 15 years. Doug previously developed programs in New Mexico, Toronto and Montreal.

Program Director - Lloyd MacDonald achieved his honours degree in Human Resources and has worked in the field of addiction and family dynamics. Lloyd also worked as a Counsellor with adolescents and is a certified Life Skills trainer.

Assistant Program Director - Michael Hartmann achieved a Masters in Social Work and has worked in the field of family therapy and addictions and has extensive experience with elders.

Mental Health Worker - Jennifer Helen Chalmers-MacDonald holds a Masters of Arts in Counselling Psychology as well as an honours degree in Science, a bachelor degree in Psychology and a Health Science Diploma (D.E.C.).

Counsellors - Gwich'in are hired with the long term goal of training them to take over the program.

History of the Gwich'in Tribal Council

The concept of a regional organization began in the late 1970's with the formation of an organization consisting of leaders from the communities of Fort McPherson (Tetlit Zehh), Aklavik, Inuvik and Arctic Red River (Tsiigehtchic) who drafted up terms of references which were later incorporated into Constitution and By-Laws for the Mackenzie Delta Regional Council, the forerunner of the Gwich'in Tribal Council.

The Mackenzie Delta Regional Council was incorporated and registered as a society in 1983 and its offices were set up in Inuvik in the fall of 1984.

The Band Councils and the Metis Locals were represented on the Regional Council and the Council was affiliated with the Dene Metis claims process up until 1992.

During the years between 1987 and 1990, the Council concentrated on two major initiatives: Land Use Planning and land claim negotiations (land selections).

In July of 1990, the Dene Metis Joint Assembly which was held in Dettah, rejected the provisions of the Dene Metis Comprehensive Land Claim Agreement which was initialled on April 09, 1990, in Yellowknife NT.

Thus ended a 20 year process that started in 1969 with the formation of the Indian Brotherhood of the Northwest Territories (later the Dene Nation) and culminated with the initialling and rejection of the land claims agreement in 1990.

The Gwich'in walked out of the Dene Metis Joint Assembly amid the cheers and jeers of the remaining regions and proceeded on the road to the Gwich'in Agreement.

At the 1990 Annual Assembly which was held in Aklavik, the Gwich'in decided to proceed with negotiations that would see the realization of the Gwich'in Comprehensive Land Claim Agreement on July 13, 1991, and its signing on April 22, 1992, in the Gwich'in community of Fort McPherson.

The name of the Regional Council was changed to the Gwich'in Tribal Council at this assembly.

The Gwich'in Tribal Council has also been involved during the period of negotiations in the delivery of a number of services to the communities: CAEDS - a business development fund; training; language and culture; and education. It is anticipated that the Tribal Council and community program and service responsibilities will grow because of self-government negotiations.

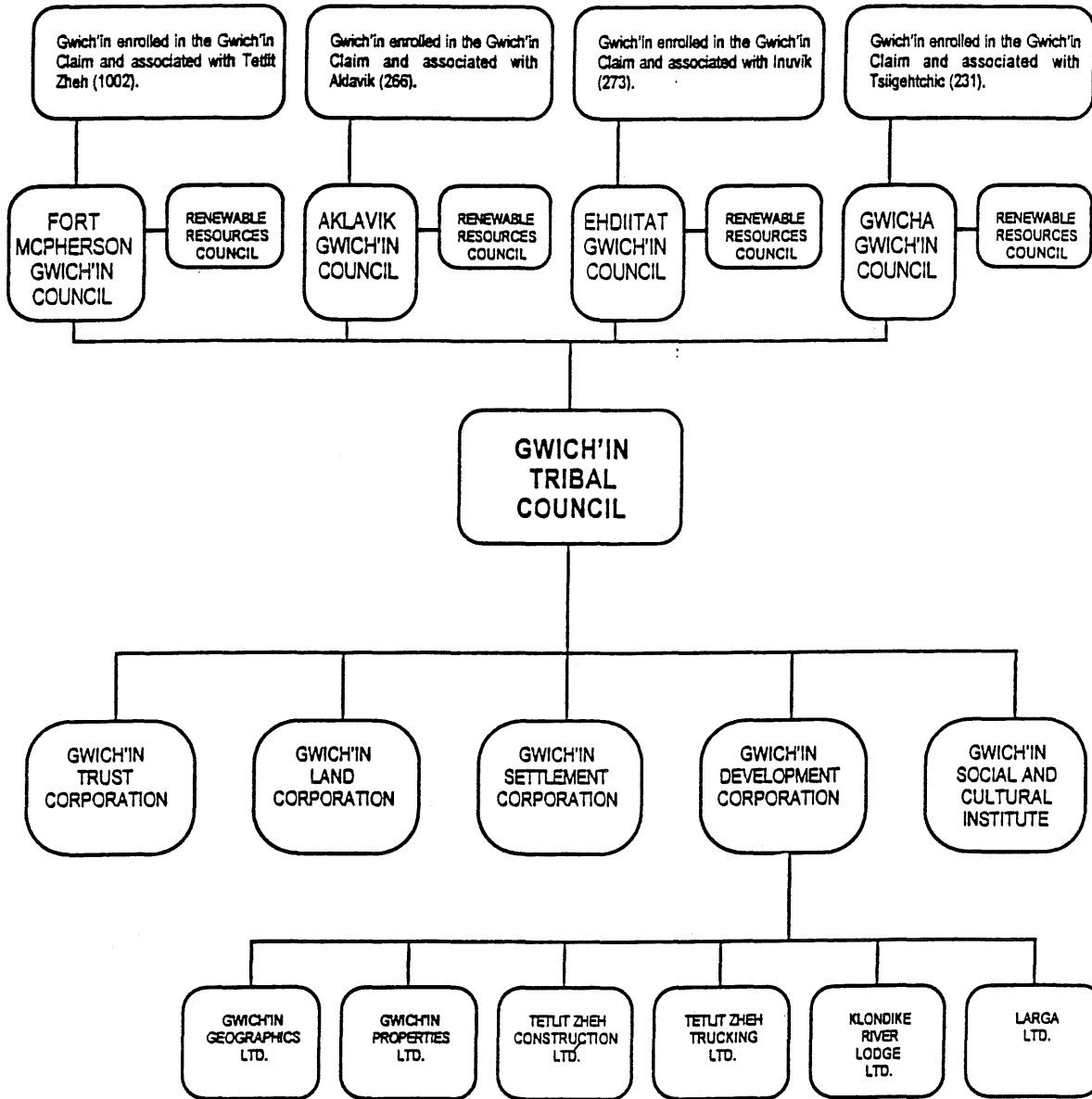
INVESTMENT IN THE FUTURE

The Gwich'in decided their future would only be guaranteed if they invested in future generations.

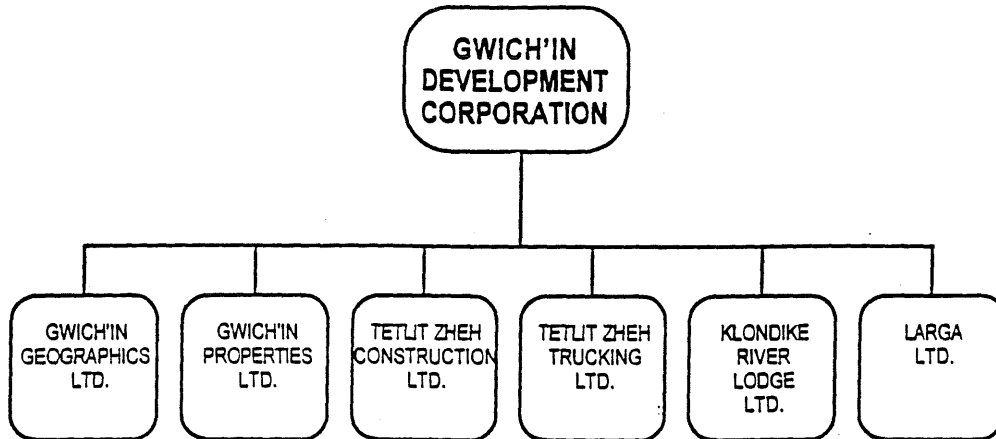
Under the leadership of the Gwich'in Tribal Council (G.T.C.) the following priorities were established(not necessarily in the order listed):

- **The Gwich'in Development Corporation (G.D.C.)** was established in 1992 and is the economic wing of the G.T.C. There have been 150 new jobs created since its inception. (See Appendix III for G.D.C. organization chart.)
- **The Gwich'in Land Administration** is responsible for the preservation, development and environmental controls of the land claims.
- **The Gwich'in Social and Cultural Institute** endeavours to document and preserve the colourful history of the Gwich'in including the language. Through this effort there is increased communication between the communities' elders and youth.
- **Gwich'in Scholarship and Education Committee** provides local training and educational needs. As well, a Scholarship Fund has been established to encourage and assist Gwich'in to pursue advanced post-secondary studies leading to a professional career.
- **The Tl'oondih Healing Society**

GWICH'IN TRIBAL COUNCIL ORGANIZATIONAL CHART



**GWICH'IN DEVELOPMENT CORPORATION
ORGANIZATIONAL CHART**



The Gwich'in Development Corporation is a subsidiary of the Gwich'in Tribal Council and has been in operation for over 2 years.

During this time the GDC has been engaged in a number of business ventures.

GDC also owns the following subsidiaries including:

- Tetlit Zeh Construction Ltd.
- Tetlit Zeh Trucking Ltd.
- Gwich'in Geographics Ltd.
- Gwich'in Properties Ltd.
- Larga Ltd.
- Klondike River Lodge Ltd.

The Gwich'in Development Corporation is made up of eight Directors consisting of the Executive of the Tribal Council (3) and one person appointed from each of the Gwich'in Councils.

The Directors are:

- | | |
|------------------|------------------------------------|
| Willard Hagen | Executive, Gwich'in Tribal Council |
| Robert A. Alexie | Executive, Gwich'in Tribal Council |
| Dolly Carmichael | Executive, Gwich'in Tribal Council |
| Wanda McDonald | Gwich'in Development Corporation |
| James B. Firth | Inuvik |
| Freddy Greenland | Aklavik |
| Grace Blake | Tsilgehtchic |
| Joseph Charlie | Fort McPherson |

TL'OONDIH

THERE IS A PLACE CALLED TL'OONDIH
A PLACE TO BEGIN MY HEALING
WHERE I CAN BEGIN TO TRUST AGAIN
TO SEEK THE TRUTH WITHIN MYSELF
ONLY "I" CAN BEGIN THIS JOURNEY
YET, I AM AFRAID, BUT NOT ALONE

TL'OONDIH, TL'OONDIH, TL'OONDIH

TO BEGIN THIS JOURNEY
I HAVE TO MAKE THE CHANGES WITHIN MYSELF
TO MAKE A DIFFERENCE FOR MY CHILDREN
TO START THIS HEALING
I MUST START FEELING

TL'OONDIH, TL'OONDIH, TL'OONDIH

I'M SCARED, SCARED, SCARED
TO LET MY FAMILY SECRETS GO
WHEN IT'S MY TIME
DOUG, LLOYD AND MICHAEL
WILL HELP ME WALK THROUGH THE DOOR

TL'OONDIH, TL'OONDIH, TL'OONDIH
TL'OONDIH, TL'OONDIH, TL'OONDIH

THERE IS A PLACE CALLED TL'OONDIH

Chords: D,A,G (slow)

*Lyrics by: Frank & Margaret
Tl'oondih Camp Participants
July 1995*

APPENDIX.....VI