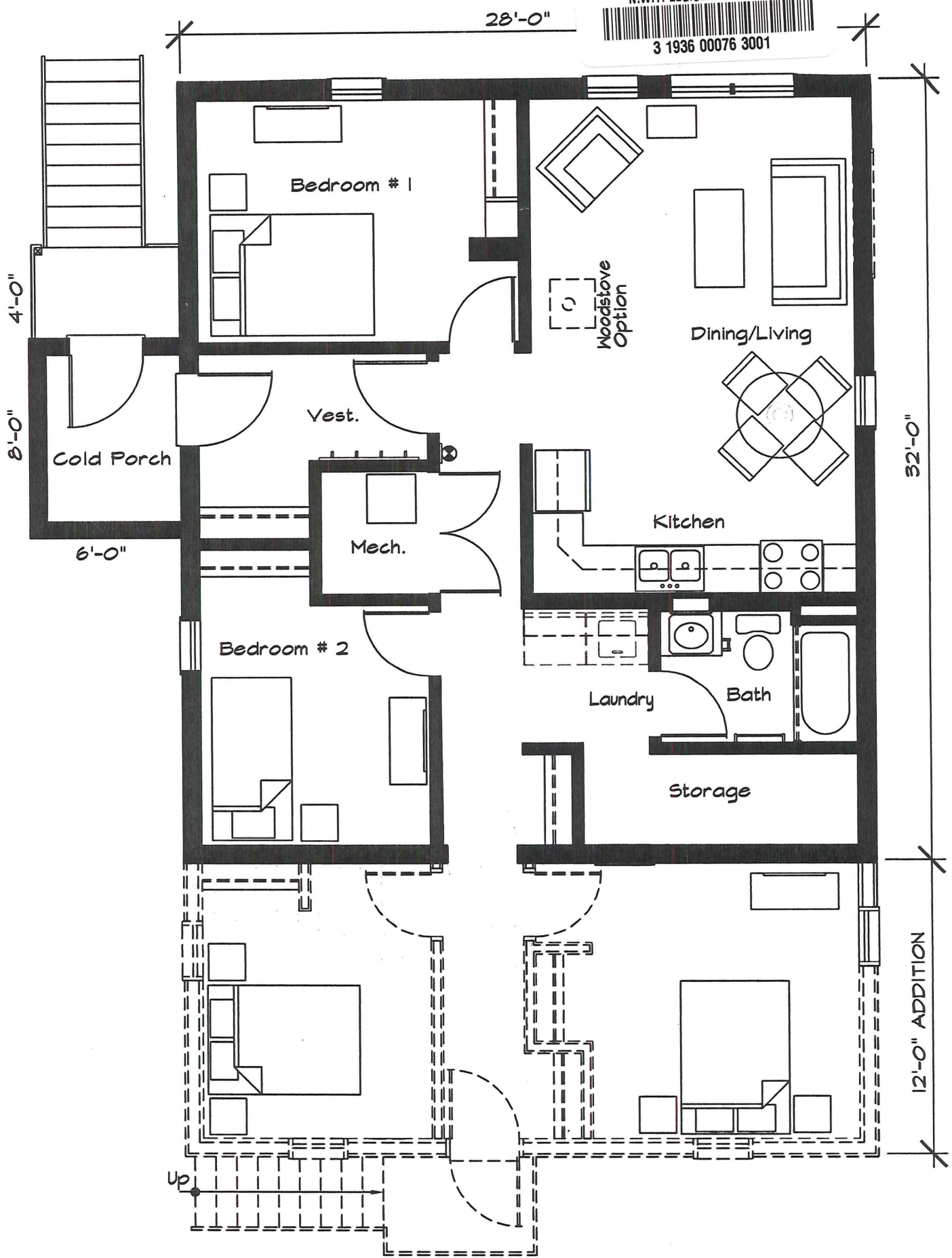


N.W.T. LEGISLATIVE LIBRARY



3 1936 00076 3001



TWO BEDROOM EXTENDED - FLOOR PLAN

896 SQ. FT. + 336 SQ. FT. ADDITION + PORCH/DECK
NOT TO SCALE

- 896 sq. ft. Main Dwelling
- 336 sq. ft. Addition
- 48 sq. ft. Porch
- 24 sq. ft. Deck

1304 sq. ft. Building gross footprint



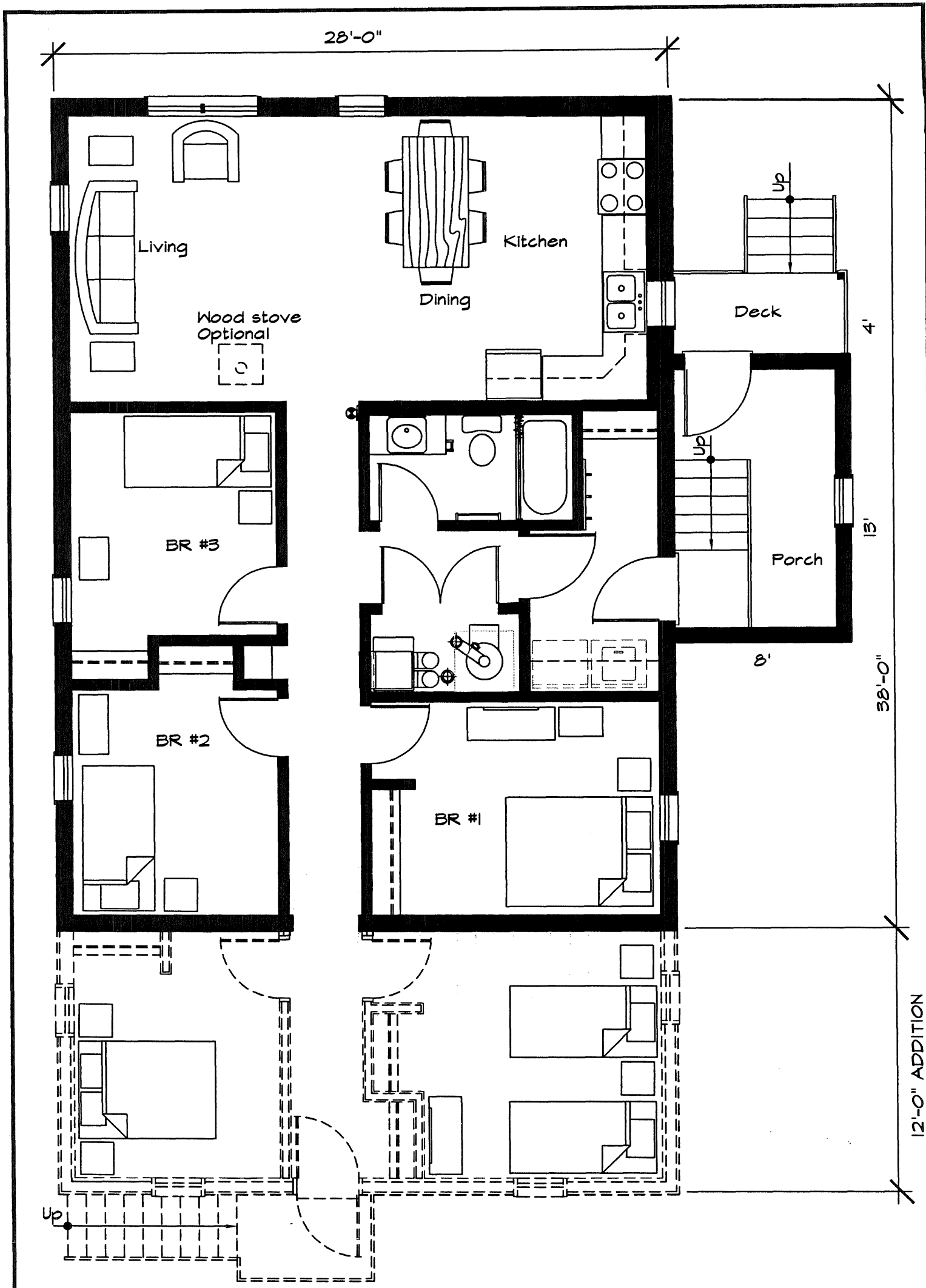
INFRASTRUCTURE DEVELOPMENT DIVISION

Date Issued: **Jan. 22, 2007**

Drawn by: **G.S.C.**

Dwelling type: **HOME OWNERSHIP BELOW THE TREELINE ABOVE GRADE CRAWL SPACE 2 BEDROOM - w/ADDITION**

2B-a (ADD)



**THREE BEDROOM EXTENDED -
LOWERED PORCH FLOOR PLAN**

1064 SQ. FT. + 336 SQ. FT. ADDITION + PORCH/DECK
NOT TO SCALE

1064 sq. ft. Main Dwelling
336 sq. ft. Addition
104 sq. ft. Porch
32 sq. ft. Deck
1536 sq. ft. Building gross footprint

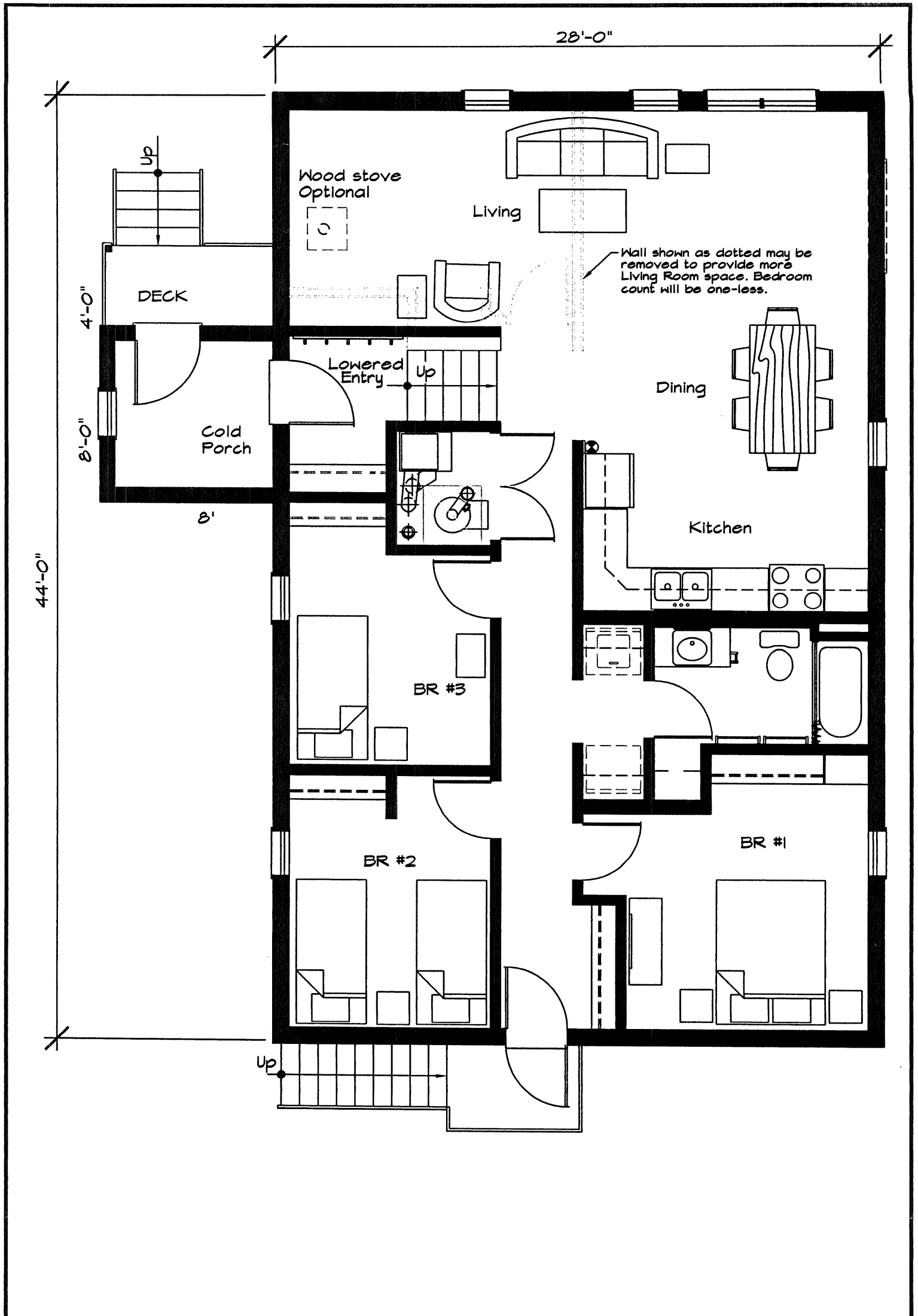


INFRASTRUCTURE
DEVELOPMENT
DIVISION

Date Issued:
Jan. 22, 2007
Drawn by:
G.S.C.

Dwelling type: **HOME OWNERSHIP
BELOW THE TREELINE
ABOVE GRADE CRAWL SPACE
LOWERED PORCH
3 BEDROOM w/ADDITION**

**3B-a
(ADD)**

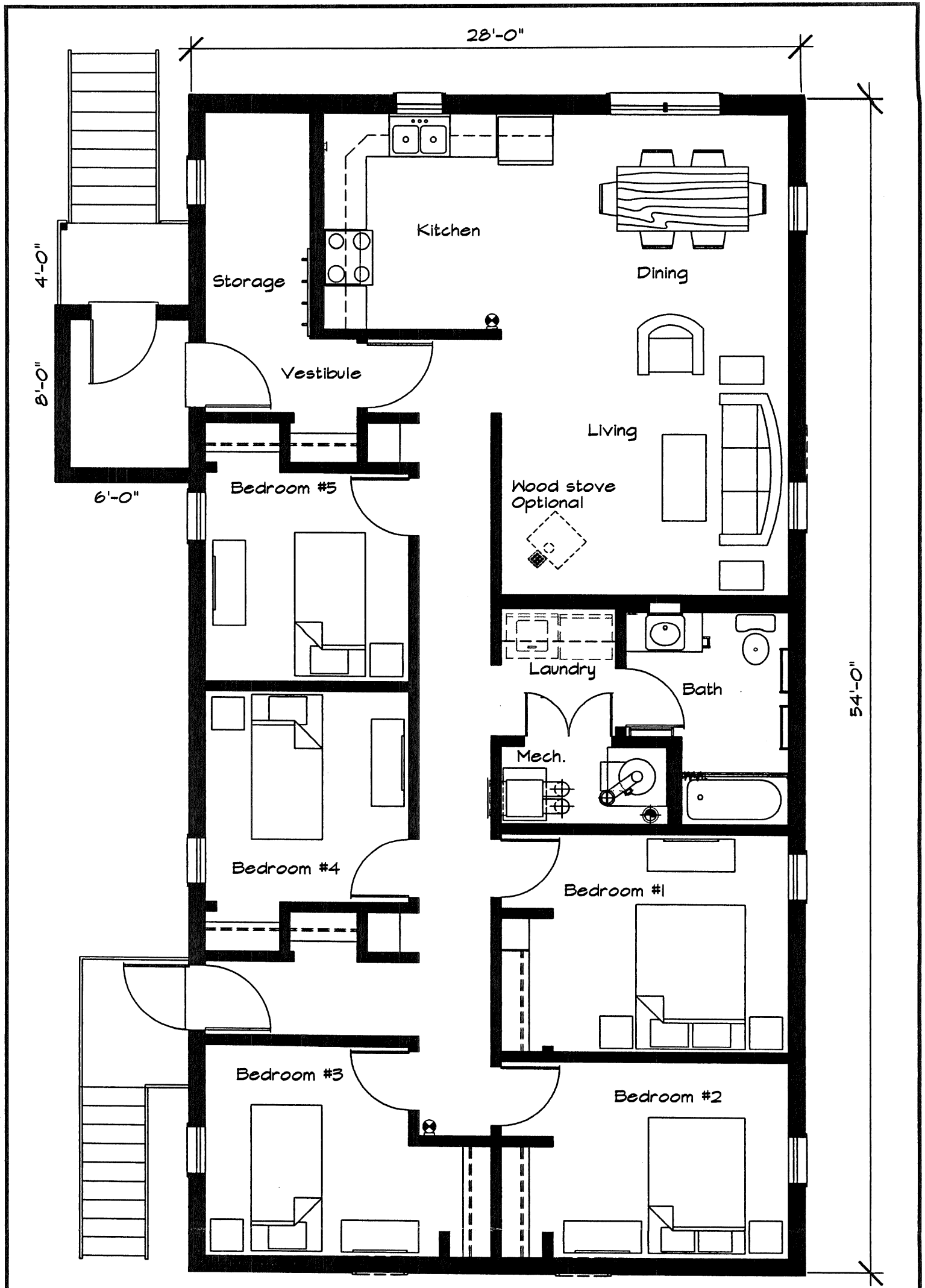


Wall shown as dotted may be removed to provide more Living Room space. Bedroom count will be one-less.

FOUR BEDROOM LOWERED ENTRY FLOOR PLAN
 1232 SQ. FT. + COLD PORCH/DECK
 NOT TO SCALE

1232 sq. ft. Main Dwelling
 64 sq. ft. Cold Porch
 32 sq. ft. Deck

1328 sq. ft. Building gross footprint - includes Main Dwelling, Cold Porch, Deck



FIVE BEDROOM FLOOR PLAN

1512 SQ. FT. + PORCH/DECK
NOT TO SCALE

1512 sq. ft. Main Dwelling
48 sq. ft. Porch
24 sq. ft. Deck

1572 sq. ft. Building gross footprint



INFRASTRUCTURE
DEVELOPMENT
DIVISION

Date Issued:
Jan. 22, 2007
Drawn by:
G.S.C.

Dwelling type: **HOME OWNERSHIP
BELOW THE TREELINE
ABOVE GRADE CRAWL SPACE
REGULAR PORCH
5 BEDROOM**

5B-a